

## UC in Your District

The University of California's reach goes well beyond its 10 campuses, five medical centers and three national laboratories. The University's presence is felt in each of California's 58 counties through a wide array of exemplary community partnerships, enriching cultural resources and innovative research programs. From health-care education for rural physicians to agricultural research advice for local farmers to college preparation efforts in nearly every public school, UC has a direct influence in your community. Find out more about UC programs in your district by visiting:

[www.universityofcalifornia.edu](http://www.universityofcalifornia.edu)



### Assembly District 11 Programs

- Agricultural
- Campus Facilities
- Community
- Health
- K-12
- Research



### UC BERKELEY

**UC Berkeley - near District 11**, is one of the world's leading academic institutions, generates an ethnically and culturally diverse student population and provides one of the finest learning experiences available. **UC Berkeley's academic programs are recognized internationally for excellence and the faculty includes eight Nobel Laureates.** UC Berkeley has one of the best university libraries in the nation as well as distinguished museums of anthropology, paleontology and science. **UC Berkeley is the largest employer in Alameda County with more than 18,000 employees and an annual total economic impact of more than \$1 billion statewide.**



### LAWRENCE LIVERMORE NATIONAL LABORATORY'S K-12 OUTREACH

**The Expanding Your Horizons Project at Lawrence Livermore National Laboratory** nurtures K-12 girl's interests in math and science subject matter and encourages them to choose careers in the field. **The program provides conferences throughout the Bay Area that include hands-on workshops led by women scientists and engineers.**



### UC/DOE NATIONAL LABS

The UC/Department of Energy Lawrence Livermore National Laboratory and Lawrence Berkeley National Laboratory are **both located near District 11** and have a combined job base of 12,600. The Livermore Laboratory is one of the world's premier scientific centers, where cutting-edge national security research is used to break new ground in energy, breast cancer and environmental research. The Berkeley Laboratory boasts nine Nobel Prizes and performs research in the life sciences and energy efficiency. **Both laboratories host a range of K-12 and community outreach programs.**

**The Berkeley Pledge** within the **School/University Partnership Program**, matches UC outreach with low-performing K-12 schools. Faculty and students help with curriculum, teacher training, mentoring, summer school and In-class support. As a result, students in more than 40 Bay Area schools have dramatically improved their scores on standardized tests in math, reading and writing.

<http://students.berkeley.edu/outreach/sup/>



**UC Berkeley's Lawrence Hall of Science Alliance for Collaborative Change in School Systems (ACCESS)** works with teachers and students in the **West Contra Costa Unified School District** to strengthen science curriculums and better prepare students from

historically under-represented groups for college.

<http://www.lhs.berkeley.edu/>



**The Puente Project** runs at 51 community colleges and 35 high schools throughout California to increase the enrollment and retention of educationally underserved students in four-year universities and works with

**Los Medanos College in District 11.** Puente has provided mentoring, teaching, and counseling for over 20,000 under-represented students. Puente students graduate from 4-year universities at twice the average rate. <http://www.puente.net>



**VA Northern California Health Care System** is an affiliate of **UC Davis Medical Center**, and provides a full range of medical care to over **417,000 veterans in the region.** The system includes a rehab and extended care facility, an outpatient clinic and a day treatment center – **all in Martinez.** <http://www.va.gov>

The first of its kind, **the New Teacher Center at UCSC**, is a national resource dedicated to teacher development and the support of practices that promote excellence and diversity in America's teaching force. The **New Teacher Project** provides teachers in the **Mt. Diablo Unified School District** with the opportunity to problem-solve with colleagues, learn teaching strategies and exchange lesson plans.

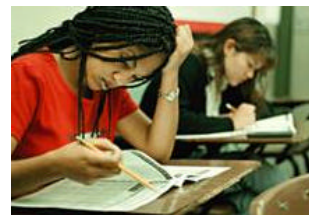
<http://www.newteachercenter.org>

**The Public Law Research Institute at UC's Hastings College of the Law** serves California legislators and agencies by analyzing the legal issues that confront California's state and local governments. Research topics have included: the AIDS crisis, corporate governance, health care reform and crime control. <http://www.uchastings.edu/plri/>

**The Mental Health Research Group at UC Berkeley's School of Social Welfare** works with California counties to pursue timely research on issues in mental health such as residential care, psychiatric emergency services and homelessness. <http://socialwelfare.berkeley.edu>



**ArtsBridge** is a UC arts education and outreach program that works to provide hands-on arts instruction arts in under-performing Bay Area public schools. ArtsBridge also provides scholarships to qualified students to teach the arts and conduct arts-related workshops in local communities.



**UC's Early Academic Outreach Program (EAOP)** has provided academic support, career advising, college counseling and motivational/skill-building workshops to help over 85,000 California students realize their

dreams of a college education. In the Bay Area, EAOP works with disadvantaged students in **37 high schools and 37 middle schools in Alameda, Contra Costa, San Francisco and Santa Clara counties.** <http://www.eaop.org>

**The UC Berkeley School of Optometry's Meredith Morgan University Eye Center** provides optometric eye care to homebound patients in **Contra Costa County.** Bedside visits are made to patients' homes, convalescent homes and living centers. The School of Optometry is the #1 ranked optometric teaching institution in the United States. <http://www.caleyecare.com>

**UC Cooperative Extension advisors work with Contra Costa County families** to improve nutrition, reduce child obesity and stretch food-stamp dollars. Youth learn leadership from **4-H activities.** **The UC Master Gardeners Program** also works to enhance community gardening. <http://ucanr.org>

For a complete listing of UC programs in your district, access our online database at: [www.universityofcalifornia.edu](http://www.universityofcalifornia.edu)