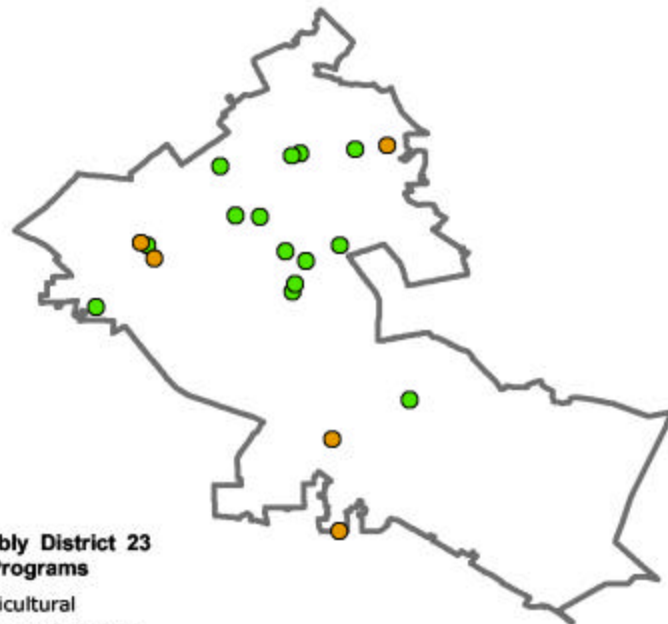


UC in Your District

The University of California's reach goes well beyond its 10 campuses, five medical centers and three national laboratories. The University's presence is felt in each of California's 58 counties through a wide array of exemplary community partnerships, enriching cultural resources and innovative research programs. From health-care education for rural physicians to agricultural research advice for local farmers to college preparation efforts in nearly every public school, UC has a direct influence in your community. Find out more about UC programs in your district by visiting:

www.universityofcalifornia.edu



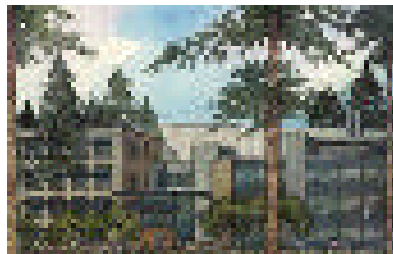
Assembly District 23 Programs

- Agricultural
- Campus Facilities
- Community
- Health
- K-12
- Research



UC SANTA CRUZ

UC Santa Cruz located near District 23, is one of the region's largest employers and an academic leader in the sciences and linguistics. **UC Santa Cruz** is affiliated with the prestigious research center and observatory at **Mt. Lick** near **San Jose** and **UC Santa Cruz Extension** offers an extensive array of classes and degrees at sites throughout **Silicon Valley**. UC Santa Cruz has a number of **innovative outreach program that reach into Silicon Valley and beyond**, including the **New Teacher Center**, a national model for teacher professional development.



INSTITUTE FOR QUANTITATIVE BIOMEDICAL RESEARCH (QB 3)

The California Institute for Quantitative Biomedical Research (QB 3) is a cooperative effort between UC Santa Cruz, UC Berkeley, UC San Francisco and private industry aimed at developing the cutting-edge research discoveries that will continue to drive the field of biomedicine. QB 3 will drive the new technologies and research that will spawn a host of biomedical innovations and **train thousands of researchers in the Bay Area and Silicon Valley**. QB 3 includes **two new buildings at UC Santa Cruz**, a new UC Berkeley facility and a site at UC San Francisco's Mission Bay research park.



INFORMATION TECHNOLOGY RESEARCH IN THE INTEREST OF SOCIETY (CITRIS)

The Center for Information Technology Research in the Interest of Society (CITRIS) is a collaboration between UC Berkeley, UC Davis, UC Merced, **UC Santa Cruz** and private corporations, established to sponsor collaborative information technology research that will ultimately provide solutions to challenge social and commercial problems affecting the quality of life of all Californians. Research will include **energy efficiency, transportation, environmental monitoring, seismic safety, education, cultural research and health-care**.



The MESA California Community College Program increases the number of math/science majors who successfully transfer and receive 4-year degrees. **MESA Success Through Collaboration (STC)** works with American Indian tribes to meet the same goal with respect to

Native Americans. **STC sites include a joint UC/CSU MESA effort at San Jose State and a site at UC Santa Cruz.**

<http://mesa.ucop.edu>

The California Policy Research Center (CPRC) applies UC's research expertise to the analysis, development and implementation of state and federal policy. CPRC provides policy-relevant research on statewide issues, oversees legislatively mandated research, and disseminates findings through publications and special briefings. CPRC hosts such projects as the Welfare Policy Research Project, the California Program on Access to Care, the Latino Policy Institute and the California-Mexico Health Initiative. <http://www.ucop.edu/cprc/>



The Puente Project runs programs at 51 community colleges and 35 high schools throughout California – **including 4 high schools in San Jose.** Puente increase the enrollment of educationally underserved students in four-

year universities. To date, Puente has provided mentoring, teaching, and counseling for over 20,000 under-represented students. <http://www.puente.net>



UC's Early Academic Outreach Program (EAOP) has provided academic support, career advising, college counseling and motivational/skill-building workshops to help over 85,000 California students realize their

dreams of a college education. In the Bay Area, EAOP works with disadvantaged students in 37 high schools and 37 middle schools in Alameda, Contra Costa, San Francisco and **Santa Clara** counties. <http://www.eaop.org>

UC Cooperative Extension in Santa Clara County works with families and local agencies to improve nutrition, reduce child obesity, and engage youth in leadership-building 4-H after-school activities. <http://ucanr.org>



The first of its kind, **the New Teacher Center (NTC) at UCSC**, is a national resource dedicated to teacher development and the support of practices that promote excellence and diversity in America's teaching force. At sites in **Santa Clara and San Jose**, **New Teacher Seminars** give

teachers the opportunity to problem-solve with colleagues, learn teaching strategies and exchange lesson plans.

<http://www.newteachercenter.org>

Shakespeare to Go is comprised of UC Santa Cruz students who bring classic performances to K-12 and community colleges throughout **Santa Cruz and Silicon Valley.**

www.shakespearesantacruz.org



ArtsBridge is a UC arts education and outreach program that works to provide hands-on arts instruction arts in under-performing Bay Area public schools. ArtsBridge also provides scholarships to qualified students to teach the arts and conduct arts-related workshops in local communities.

For a complete listing of UC programs in your district, access our on-line database at: www.universityofcalifornia.edu