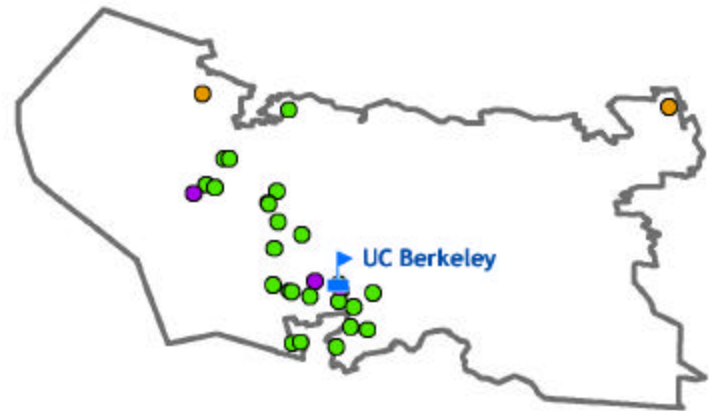


### UC in Your District

The University of California's reach goes well beyond its 10 campuses, five medical centers and three national laboratories. The University's presence is felt in each of California's 58 counties through a wide array of exemplary community partnerships, enriching cultural resources and innovative research programs. From health-care education for rural physicians to agricultural research advice for local farmers to college preparation efforts in nearly every public school, UC has a direct influence in your community. Find out more about UC programs in your district by visiting:

[www.universityofcalifornia.edu](http://www.universityofcalifornia.edu)



#### Assembly District 14 Programs

-  UC Campuses
-  Agricultural
-  Campus Facilities
-  Community
-  Health
-  K-12
-  Research



### UC BERKELEY

**UC Berkeley - in District 14**, is one of the world's leading academic institutions, generates an ethnically and culturally diverse student population and provides one of the finest learning experiences available. **UC Berkeley's academic programs are recognized internationally for excellence and the faculty includes eight Nobel Laureates.** UC Berkeley has one of the best university libraries in the nation as well as distinguished museums of anthropology, paleontology and science. **UC Berkeley is the largest employer in Alameda County with more than 18,000 employees and an annual total economic impact of more than \$1 billion statewide.**

### LAWRENCE BERKELEY NATIONAL LABORATORY

**The UC/DOE-affiliated Lawrence Berkeley National Laboratory in District 14, employs a staff of 4,500 and has an annual budget of \$350 million.** The laboratory was the birthplace of the cyclotron, the instrument that led to a Golden Age of particle physics and revolutionary discoveries about the nature of the universe. The laboratory boasts **nine Nobel Prizes**, five in physics and four in chemistry. Today, the laboratory performs research in life sciences, energy efficiency and accelerators, **as well as hosting a variety of K-12 and community programs.**

### UC's K-12 OUTREACH

UC Berkeley's Lawrence Hall of Science Alliance for Collaborative Change in School Systems (ACCESS) works with the **Emeryville and West Contra Costa Unified School Districts** to strengthen the capacity of schools to prepare students from historically under-represented groups for college. **The UC-affiliated national laboratories also host several science education programs, including the Lawrence Berkeley Laboratory's award-winning Virtual Frog Dissection Web Site designed for classrooms statewide.**

**The Mental Health Research Group at UC Berkeley's School of Social Welfare** works with California counties to pursue timely research on issues in mental health such as residential care, psychiatric emergency services and homelessness. **In Alameda County, the group's research has provided an effective framework for mental health funding rates.**

<http://socialwelfare.berkeley.edu>

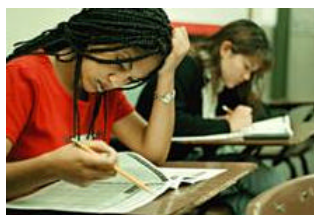


**UC's MESA (Mathematics, Engineering & Science Achievement)** works to prepare educationally disadvantaged students for four-year colleges at schools throughout the state, including **Berkeley High. The MESA California Community College Program** increases the

number of math and science majors who successfully transfer and receive university degrees and also works with American Indian tribes to meet the same goal with respect to Native Americans. District sites include the **American Indian Public School and the Oakland Indian Education Center.**

<http://mesa.ucop.edu>

**The Berkeley Pledge, within the School/University Partnership Program,** matches UC outreach with K-12 schools. Faculty and students help with curriculum, teacher training, mentoring, summer school and in-class support. **As a result, students in more than 40 Bay Area schools have dramatically improved their scores on standardized tests in math, reading and writing.** <http://students.berkeley.edu>



**UC's Early Academic Outreach Program (EAOP)** has provided academic support, career advising, college counseling and skill-building workshops to help over 85,000 California students realize their dreams of a college education.

**In the Bay Area, EAOP works with educationally disadvantaged students in 37 high schools and 37 middle schools in Alameda, Contra Costa, San Francisco and Santa Clara counties.** <http://www.eaop.org>

**UC Cooperative Extension advisors work with families in Alameda and Contra Costa counties** to improve nutrition and reduce child obesity. Youth learn science and leadership from **4-H after-school activities. UC-trained master gardeners work with community members to enhance local gardening projects.** <http://ucanr.org>



**UC Berkeley students provide mentoring and academic support** to improve the graduation and college admission rates of under-represented children in K-12 schools in **District 14, including Rosa Parks Elementary in Emeryville.**

**The Bay Area Social Services Consortium (BASSC)** is composed of county Social Service Directors and the graduate social work programs at UC Berkeley, CSU Sacramento, CSU San Jose and CSU San Francisco. BASSC develops educational, applied research and policy development programs in collaboration with county agency administrators and staff. <http://cssr.berkeley.edu/bassc/>



**The History Through Literature Project at UC Berkeley** builds curriculums for K-12 teachers on topics ranging from India's literary history to the spread of Islam. Seminars and an on-line

database of lesson plans support thousands of teachers statewide. <http://www.ias.berkeley.edu/orias>



**ArtsBridge** is a UC arts education and outreach program that works to provide hands-on arts instruction arts in under-performing Bay Area public schools, including **Martin Luther King Middle School in Berkeley.** ArtsBridge also provides scholarships to qualified students to teach the arts and conduct arts-related workshops in local communities. [www.bampfa.berkeley.edu/bca/artsbridge](http://www.bampfa.berkeley.edu/bca/artsbridge)

**The California Policy Research Center (CPRC)** applies UC's research expertise to the analysis, development and implementation of state and federal policy. CPRC provides policy relevant UC-led research on statewide issues, oversees legislatively mandated research projects, and disseminates research findings through publications and special briefings. **CPRC also hosts projects such as the Welfare Policy Research Project (WPRP), the California Program on Access to Care (CPAC) and the California-Mexico Health Initiative (CMHI).** <http://www.ucop.edu/cprc>

For a complete listing of UC programs in your district, access our on-line database at: [www.universityofcalifornia.edu](http://www.universityofcalifornia.edu)