

UC in Your District

The University of California's reach goes well beyond its 10 campuses, five medical centers and three national laboratories. The University's presence is felt in each of California's 58 counties through a wide array of exemplary community partnerships, enriching cultural resources and innovative research programs. From health-care education for rural physicians to agricultural research advice for local farmers to college preparation efforts in nearly every public school, UC has a direct influence in your community. Find out more about UC programs in your district by visiting: www.universityofcalifornia.edu



Assembly District 22 Programs

- Agricultural
- Campus Facilities
- Community
- Health
- K-12
- Research



UC SANTA CRUZ

UC Santa Cruz located near District 22, is one of the region's largest employers and an academic leader in the sciences and linguistics. UC Santa Cruz is affiliated with the prestigious research center and observatory at Mt. Lick near San Jose and UC Santa Cruz Extension offers an extensive array of classes and degrees at sites throughout Silicon Valley. UC Santa Cruz has a number of innovative outreach programs that reach into Silicon Valley and beyond.



NEW TEACHER CENTER (NTC)

The first of its kind, the **New Teacher Center (NTC)** at UC Santa Cruz is a national resource dedicated to teacher development and the support of practices that promote excellence and diversity in America's teaching force. At sites in **Santa Clara, San Jose and Redwood City, New Teacher Seminars** give teachers the opportunity to problem-solve with colleagues, learn new teaching strategies and exchange lesson plans.



THE CALIFORNIA INSTITUTE FOR QUANTITATIVE BIOMEDICAL RESEARCH (QB3)

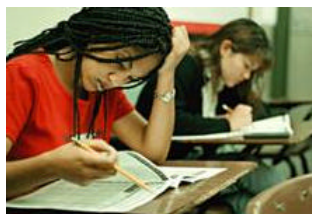
The California Institute for Quantitative Biomedical Research (QB 3) is a cooperative effort between UC Santa Cruz, UC Berkeley, UC San Francisco and private industry aimed at developing the cutting-edge research discoveries that will continue to drive the field of biomedicine. QB 3 will drive the new technologies and research that will spawn a host of biomedical innovations and **train thousands of researchers in the Bay Area and Silicon Valley.** QB 3 includes **two buildings at UC Santa Cruz**, a UC Berkeley facility and a site at UC San Francisco's Mission Bay research park.



The MESA California Community College Program increases the number of math/science majors who successfully transfer and receive 4-year degrees. **MESA Success Through Collaboration (STC)** works with American Indian tribes to meet the same goal with

respect to Native Americans. **STC sites include a joint UC/CSU MESA effort at San Jose State and a site at UC Santa Cruz.** <http://mesa.ucop.edu>

The California Policy Research Center (CPRC) applies UC's research expertise to the analysis, development and implementation of state and federal policy. CPRC provides policy-relevant research on statewide issues, oversees legislatively mandated research and disseminates findings to the public. CPRC hosts such projects as the Welfare Policy Research Project, the California Program on Access to Care, the Latino Policy Institute and the California-Mexico Health Initiative. <http://www.ucop.edu/cprc/>



UC's Early Academic Outreach Program (EAOP) has provided academic support, career advising, college counseling and motivational/skill-building workshops to help over 85,000 California students realize their

dreams of a college education. **In the Bay Area, EAOP works with disadvantaged students in 37 high schools and 37 middle schools in Alameda, Contra Costa, San Francisco and Santa Clara counties.** <http://www.eaop.org>



The Puente Project runs programs at 51 community colleges and 35 high schools throughout California, **including four high schools in San Jose and a program at De Anza College in Cupertino.** Puente increase the enrollment of educationally underserved

students in four-year universities. To date, Puente has provided mentoring, teaching, and counseling for over 20,000 under-represented students. <http://www.puente.net>



The Center for Information Technology Research in the Interest of Society (CITRIS) is a collaboration between UC Berkeley, UC Davis, UC Merced, UC Santa Cruz and private corporations, established to sponsor collaborative information technology research that will

ultimately provide solutions to challenge social and commercial problems affecting the quality of life of all Californians. **Research will focus on energy efficiency, transportation, environmental monitoring, seismic safety, education and health care.**

UC Agriculture and Natural Resources Cooperative Extension in Santa Clara County provides accessible and comprehensive research information for local growers, ranchers, governments and the larger community. Youth learn science and leadership from **4-H activities.** **The UC Master Gardener Program** also works to enhance community gardening <http://www.ucanr.org>

For a complete listing of UC programs in your district, access our online database at: www.universityofcalifornia.edu