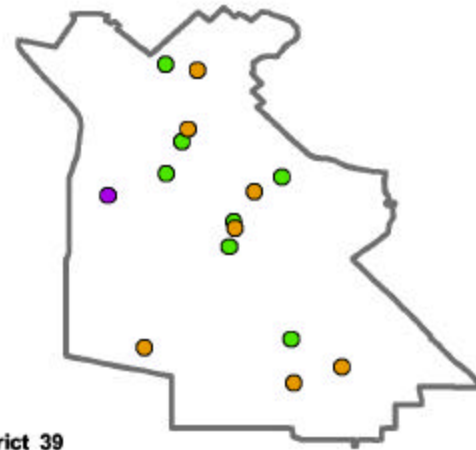


### UC in Your District

The University of California's reach goes well beyond its 10 campuses, five medical centers and three national laboratories. The University's presence is felt in each of California's 58 counties through a wide array of exemplary community partnerships, enriching cultural resources and innovative research programs. From health-care education for rural physicians to agricultural research advice for local farmers to college preparation efforts in nearly every public school, UC has a direct influence in your community. Find out more about UC programs in your district by visiting:

[www.universityofcalifornia.edu](http://www.universityofcalifornia.edu)



Assembly District 39 Programs

- Agricultural
- Campus Facilities
- Community
- Health
- K-12
- Research



### UCLA MEDICAL CENTER

**UCLA Medical Center provides services throughout District 39** and is ranked # 1 in the West by *U.S. News and World Report*. More than 300,000 people, including a disproportionate share of the state's poor and uninsured, come to UCLA Medical Center. UCLA's Mattel Children's Hospital offers a full range of specialty health services for children. The medical center serves as a highly acclaimed training site for physicians, many of whom choose to stay at UCLA and as a preeminent research center that drives innovations in life-saving drugs and surgical procedures.



### CALIFORNIA NANOSYSTEMS INSTITUTE (CNSI)

CNSI will facilitate a public/private approach to developing the information, biomedical, and manufacturing technologies that will dominate science and the economy in the 21st century. The institute will provide a world-class intellectual and physical environment that supports collaboration among California's university, industry and national lab scientists. The institute will be located at UCLA and UCSB and will include corporate-sponsored incubator labs.



### UC NATURAL RESERVES

The UC-affiliated Stunt Ranch Santa Monica Mountains Reserve is located in the Cold Creek watershed of Malibu Creek near District 39. The reserve, one of 34 UC-affiliated reserves in the state, protects one of the most pristine and biologically diverse watersheds in the Santa Monica Mountains. The reserve is the site of much environmental and anthropological research and also provides educational and outreach opportunities for the local community and K-12 schools throughout the area.



**The Puente Project** runs programs at 51 community colleges and 35 high schools throughout California to increase the enrollment and retention of educationally underserved students in four-year universities

and works with **San Fernando Senior High School in District 39**. To date, Puente has provided mentoring, teaching, and counseling for over 20,000 under-represented students. Puente students graduate from 4-year universities at twice the average rate. <http://www.puente.net>

**The UCLA Regional Oncology Center in Santa Clarita is affiliated with the world-renowned UCLA Jonsson Comprehensive Cancer Center** and provides comprehensive cancer care services and investigative clinical trials. Patients who come to UCLA centers for cancer care benefit from the most advanced forms of therapy available, and from a variety of supportive services. <http://www.healthcare.ucla.edu>



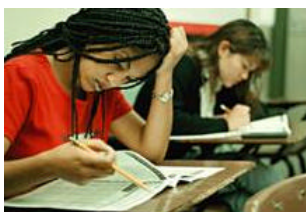
**UC's MESA (Mathematics, Engineering & Science Achievement)** works to prepare educationally disadvantaged students for four-year colleges at several schools in the district including **Maclay Middle School in Pacoima and San Fernando Junior and Senior High Schools**

**in District 39**. The UC-affiliated MESA California Community College Program increases the number of math and science majors who successfully transfer and receive degrees from 4-year universities and operates from a site at **CSU Northridge**. <http://mesa.ucop.edu>

**UniCamp** operates educational and recreational programs in the **City of San Fernando** for children from low-income families in the Los Angeles area. UniCamp strives to build self-esteem, promote the value of education, and foster a sense of community. [www.unicamp.org](http://www.unicamp.org)

**UC's Design for Sharing** purchases thousands of tickets to events presented by UCLA Performing Arts. Tickets are distributed through social service agencies for those who could not otherwise afford to attend the events – **including at sites in San Fernando and Sylmar in District 39**.

**UC's Division of Agriculture and Natural Resources Cooperative Extension** provides accessible and comprehensive agricultural research information for local growers, ranchers, governments and the larger community through county advisors at the **Ventura and Los Angeles County offices**. UC advisors also work to improve nutrition, reduce child obesity, ease the transition from welfare to work and engage 4-H youth in educational activities. <http://www.ucanr.org>



**UC's Early Academic Outreach Program (EAOP)** has provided academic support, career advising, college counseling, motivational and skill-building workshops to help over 85,000 California students realize their dreams of a college education.

EAOP works with **several K-12 schools in District 39, including Sylmar High School**. <http://www.eaop.org>

**UC's California Subject Matter Projects** develop teachers' knowledge in major K-12 subject areas by enhancing instructional strategies, providing access to the techniques that improve student achievement, and developing 'teacher-leaders' – at over 500 California school districts. With the expertise of teachers and UC faculty, the program annually trains thousands of teachers through intensive summer courses – **including those at schools in Sylmar and San Fernando**. <http://csmp.ucop.edu>



**The VA Greater Los Angeles Healthcare System is an affiliate of the UCLA Medical Center and provides a full range of medical care to thousands of veterans in the region**. The system houses a teaching hospital

and provides a full range of patient care services using state-of-the-art technology. <http://www.va.gov>

For a complete listing of UC programs in your district, access our on-line database at: [www.ucop.edu](http://www.ucop.edu)