

### UC in Your District

The University of California's reach goes well beyond its 10 campuses, five medical centers and three national laboratories. The University's presence is felt in each of California's 58 counties through a wide array of exemplary community partnerships, enriching cultural resources and innovative research programs. From health-care education for rural physicians to agricultural research advice for local farmers to college preparation efforts in nearly every public school, UC has a direct influence in your community. Find out more about UC programs in your district by visiting:

[www.universityofcalifornia.edu](http://www.universityofcalifornia.edu)



#### Assembly District 59 Programs

- Agricultural
- Campus Facilities
- Community
- Health
- K-12
- Research



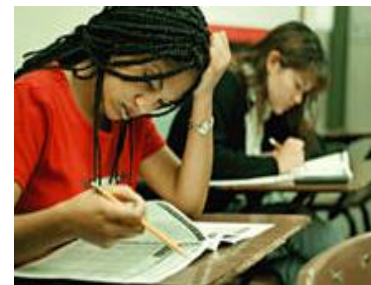
#### UCLA MEDICAL CENTER

**UCLA Medical Center provides services throughout District 59** and is ranked # 1 in the West by *U.S. News and World Report*. More than 300,000 people, including a disproportionate share of the state's poor and uninsured, come to UCLA Medical Center each year. UCLA's Mattel Children's Hospital offers a full range of specialty health services for children. The medical center serves as a highly acclaimed training site for physicians, many of whom choose to stay at UCLA and as a preeminent research center that drives innovations in life-saving drugs and surgical procedures.



#### CALIFORNIA NANOSYSTEMS INSTITUTE (CNSI)

**CNSI will facilitate a public/private approach to developing the information, biomedical, and manufacturing technologies that will dominate science and the economy in the 21st century.** The institute will provide a world-class intellectual and physical environment that supports collaboration among California's university, industry and national lab scientists. **The institute will be located at both UCLA and UCSB and will include corporate-sponsored incubator labs.**



#### UC'S EARLY ACADEMIC OUTREACH PROGRAM

**UC's Early Academic Outreach Program (EAOP)** has provided academic support, career advising, college counseling, motivational and skill-building workshops to help over 85,000 California students realize their dreams of a college education. EAOP works with several K-12 schools in Claremont in District 59.

**UCLA's Regional Oncology Centers**, affiliated with the world-renowned UCLA Jonsson Comprehensive Cancer Center, provide cancer care services and investigative clinical trials at sites in the Santa Clarita Valley, **Glendora**, Antelope Valley and Pasadena. Patients who come to UCLA centers for cancer care benefit from the most advanced forms of therapy available, and from a variety of supportive services.

<http://www.healthcare.ucla.edu>

**The Lindcove Research and Extension Center**, established by local growers and UC Riverside, provides research for the California citrus industry. Researchers focus on areas such as the management of citrus pests.

**The UCLA Mobile Eye Clinic** provides free eye examinations to more than 5,000 people annually in the **greater Los Angeles area**. Visits are made to schools, agencies working with abused and foster children and the elderly, community organizations and homeless clinics.



**UC's MESA (Mathematics, Engineering & Science Achievement)** works to prepare educationally disadvantaged students for four-year colleges at several schools, including **Claremont Middle School in District 59**. The UC-affiliated MESA California Community College Program increases the number of math and science majors who successfully transfer and receive degrees from 4-year universities and works with students from **Harvey Mudd College**. <http://mesa.ucop.edu>



**The VA Greater Los Angeles Healthcare System** is an affiliate of the **UCLA Medical Center** and provides a full range of medical care to **veterans in the region**. The system houses a teaching hospital and provides a full range of

patient care services using state-of-the-art technology.

**Outpatient clinics are located throughout the region, including sites in Pasadena and Antelope Valley.**

<http://www.va.gov>

**The UC Davis Animal Ambassadors program** uses web-based and hands-on interaction with animals to foster children's interest in science. The program uses interactive materials and written curriculum for classrooms that develop scientific inquiry and critical thinking skills. Between 3,500 - 4,000 children participated in the program between 1999-2002. **The program is present in schools in Yolo, El Dorado, San Diego, San Luis Obispo, San Mateo, Marin, Glenn, Tehama, Los Angeles and Sacramento counties.**

For a complete listing of UC programs in your district, access our on-line database at: [www.ucop.edu](http://www.ucop.edu)



**UC Cooperative Extension** advisors at the **San Bernardino and Los Angeles county offices** work with families to improve health, nutrition and food safety, and engage youth in educational **4-H activities**. Advisors also consult on the

management of ornamental plants and turfgrass. The **UC Master Gardeners** program also helps enhance community gardening. <http://ucanr.org>

**UC's California Subject Matter Projects** develop teacher knowledge in major K-12 subject areas by enhancing instructional strategies and developing 'teacher-leaders' – at over 500 California school districts. With the expertise of teachers and UC faculty, the program annually trains thousands of teachers at schools in **District 59, including Cottonwood Elementary in Hesperia**. <http://csmmp.ucop.edu>