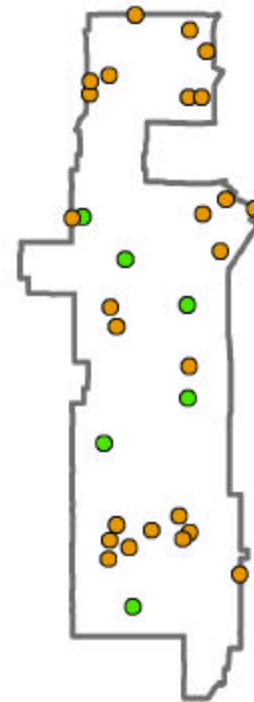


## UC in Your District

The University of California's reach goes well beyond its 10 campuses, five medical centers and three national laboratories. The University's presence is felt in each of California's 58 counties through a wide array of exemplary community partnerships, enriching cultural resources and innovative research programs. From health-care education for rural physicians to agricultural research advice for local farmers to college preparation efforts in nearly every public school, UC has a direct influence in your community. Find out more about UC programs in your district by visiting:

[www.universityofcalifornia.edu](http://www.universityofcalifornia.edu)



Assembly District 48 Programs

- Agricultural
- Campus Facilities
- Community
- Health
- K-12
- Research



## UCLA MEDICAL CENTER

**UCLA Medical Center provides services throughout District 48**, and is known for its pioneering advancements in organ transplantation and ultrasound. It is ranked #1 in the West by *U.S. News and World Report*. More than 300,000 people, **including a disproportionate share of the state's poor and uninsured**, are cared for at UCLA Medical Center each year. **UCLA's Mattel Children's Hospital** offers a full range of specialty health services for children. The medical center serves as a training site for physicians and as a research center that drives innovations in life-saving drugs and surgical procedures.

## UC ARTS OUTREACH

**UC Santa Cruz's African American Theater Arts Troupe** is dedicated to providing an outlet for the creativity and talents of underrepresented students through plays, presentations and workshops on campus and throughout the community. The troupe provides scholarships, mentoring and performances to **K-12 schools and community colleges throughout Los Angeles, including Crenshaw High.**

## UCLA

**UCLA - near District 48, is one of the country's top 10 research universities** with more than 100 majors offered to undergraduate students. **UCLA has a \$4.34 billion annual economic impact on the state economy.** The UCLA faculty is distinguished internationally – **with five current Nobel Laureates.** **UCLA also hosts renowned postgraduate schools** of Education, Engineering, Law, Medicine, Nursing, Public Health, Public Policy and Theater, Film and Television.

**The world-renowned UCLA Jonsson Comprehensive Cancer Center** provides cancer care services and investigative clinical trials at a **satellite clinic in Inglewood**. Patients who come to UCLA centers for cancer care benefit from the most advanced forms of therapy available and from a variety of supportive services. <http://www.healthcare.ucla.edu>



**The Puente Project** runs programs at 51 community colleges and 35 high schools throughout California to increase the enrollment and retention of educationally underserved students in four-year universities. Puente works

with the **Los Angeles Unified School District**. To date, Puente has provided mentoring, teaching and counseling for over 20,000 under-represented students. Puente students graduate from four-year universities at twice the average rate.

<http://www.puente.net>

**The California Policy Research Center (CPRC)** applies UC's research expertise to the analysis, development and implementation of state and federal policy. CPRC provides policy-relevant UC-led research on statewide issues, oversees legislatively mandated research projects and disseminates research findings to the public. CPRC also hosts the Welfare Policy Research Project (WPRP), the **California Program on Access to Care (CPAC)**, the Latino Policy Institute and the California-Mexico Health Initiative (CMHI).

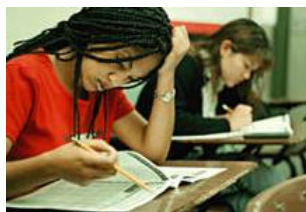


**UC's MESA (Mathematics, Engineering & Science Achievement)** works to prepare educationally disadvantaged students for four-year colleges at **Manual Arts High in District 48**. <http://mesa.ucop.edu>

**UC's Design for Sharing** purchases thousands of tickets to events presented by UCLA Performing Arts. Tickets are distributed through social service agencies for those who could not otherwise afford to attend the events – **including the Shriner's Hospital in District 48**. [www.performingarts.ucla.edu](http://www.performingarts.ucla.edu)

**UniCamp** operates educational and recreational programs for children from low-income families at sites throughout the region. UniCamp strives to build self-esteem, promote the value of education and foster a sense of community. [www.unicamp.org](http://www.unicamp.org)

**The UCLA Mobile Eye Clinic provides free eye exams in the greater Los Angeles area to people without medical insurance**. The mobile unit visits schools and agencies working with abused and foster children, the elderly and homeless. Over 5,000 patients are treated each year.



**UC's Early Academic Outreach Program (EAOP)** has provided academic support, college counseling, motivational and skill-building workshops to over 85,000 California students to help them realize their dreams of a college education. EAOP

works with several **K-12 schools in District 48**.

<http://www.eaop.org>

**UC's Division of Agriculture and Natural Resources Cooperative Extension** provides accessible and comprehensive agricultural research information for local growers, ranchers, governments and the larger community at the **Los Angeles County office**. UC advisors also work to improve nutrition, reduce child obesity, ease the transition from welfare to work and engage 4-H youth in educational activities. <http://ucanr.org>



**The VA Greater Los Angeles Healthcare System is an affiliate of the UCLA Medical Center** and provides a full range of medical care to **thousands of veterans in the region**. The system houses a teaching hospital and provides a full range of

patient care services using state-of-the-art technology. **Outpatient clinics are located in Gardena and in East Los Angeles. The Vietnam Veterans Readjustment Counseling Center is located in Culver City.** <http://www.va.gov>

For a complete listing of UC programs in your district, access our online database at: [www.universityofcalifornia.edu](http://www.universityofcalifornia.edu)