

UC in Your District

The University of California's reach goes well beyond its 10 campuses, five medical centers and three national laboratories. The University's presence is felt in each of California's 58 counties through a wide array of exemplary community partnerships, enriching cultural resources and innovative research programs. From healthcare education for rural physicians to agricultural research advice for local farmers to college preparation efforts in nearly every public school, UC has a direct influence in your community. Find out more about UC programs in your district by visiting:

www.universityofcalifornia.edu



Assembly District 36 Programs

-  UC Campuses
-  Agricultural
-  Campus Facilities
-  Community
-  Health
-  K-12
-  Research



UCLA MEDICAL CENTER

UCLA Medical Center provides services throughout District 36 and is known for its pioneering advancements in organ transplantation and ultrasound and was **ranked the # 1 hospital in the West** by *U.S. News and World Report*. **More than 300,000 people, including a disproportionate share of the state's poor and uninsured, come to UCLA Medical Center each year.** **UCLA's Mattel Children's Hospital** offers a full range of specialty health services for children. **The medical center serves as a highly acclaimed training site for physicians** and as a preeminent research center that drives innovations in life-saving drugs and surgical procedures.



CALIFORNIA NONOSYSTEMS INSTITUTE (CNSI)

CNSI will facilitate a public/private approach to developing the information, biomedical, and manufacturing technologies that will dominate science and the economy in the 21st century. The institute will provide a world-class intellectual and physical environment that supports collaboration among California's university, industry and national lab scientists. **The institute will be located at UCLA and UC Santa Barbara and will include corporate-sponsored incubator labs.**



UCLA's VETERAN HEALTH SERVICES

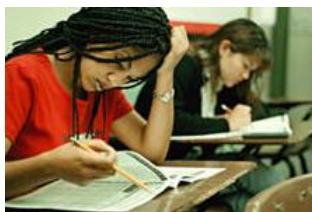
The VA Greater Los Angeles Healthcare System is an affiliate of the UCLA Medical Center and provides a full range of medical care to thousands of veterans in the region. The system houses a teaching hospital and provides a full range of patient care services to area veterans using state-of-the-art technology. **Outpatient clinics are located throughout the region, including sites in Lancaster and Antelope Valley in District 36.**

The UCLA Regional Oncology Lancaster/Antelope Valley Center in District 36, is affiliated with the world-renowned UCLA Jonsson Comprehensive Cancer Center and provides a range of cancer care services and investigative clinical trials to the local community. **Patients who come to UCLA centers for cancer care benefit from the most advanced forms of therapy available, and from a variety of supportive services.** <http://www.healthcare.ucla.edu>



UC's MESA (Mathematics, Engineering & Science Achievement) works to prepare educationally disadvantaged students for four-year colleges at several area K-12 schools, including **William L. Sheppard Middle in Victorville in District 36.** <http://mesa.ucop.edu>

The UC Davis Animal Ambassadors program uses web-based and hands-on interaction with animals to foster children's interest in science. The program uses interactive materials and written curriculum for classrooms that develop scientific inquiry and critical thinking skills. Between 3,500 - 4,000 children participated in the program between 1999-2002. **The program is present in schools throughout Los Angeles county.**



UC's Early Academic Outreach Program (EAOP) has provided academic support, career advising, college counseling, motivational and skill-building workshops to help over 85,000 California students realize their dreams of a college

education. EAOP works with **several K-12 schools in Palmdale, Victorville and Lancaster – including Lancaster High.** <http://eaop.org>



UC Cooperative Extension in San Bernadino and Los Angeles Counties is helping farmers deal with dust erosion and crop disease problems using cover crops. UC advisors also work to improve nutrition, reduce child obesity, ease the transition from welfare to work and engage youth in **4-H clubs**, which sponsor youth development projects in science, computers, livestock and leadership. <http://ucanr.org>

The Lindcove Research and Extension Center, established by local growers and UC Riverside, provides critical agricultural research for the California citrus industry. Researchers focus on areas such as the management of citrus pests.

The UCLA Mobile Eye Clinic provides free eye examinations to people without medical insurance or access to regular medical care. The 38 ft. mobile unit makes three trips per week in the **greater Los Angeles** area to various schools, agencies working with abused and foster children and community organizations serving low-income families, the elderly, and the homeless. The unit also visits Indian reservations near Palm Springs. A patient needing eye surgery may get it at a reduced price or at no cost. The program examines 5,000 people each year.

For a complete listing of UC programs in your district, access our on-line database at: www.universityofcalifornia.edu