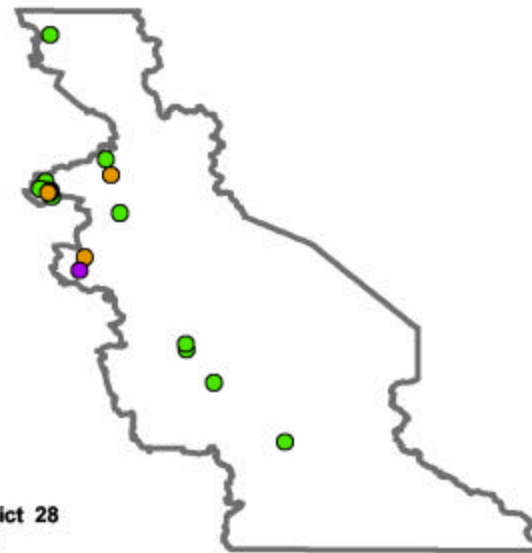


### UC in Your District

The University of California's reach goes well beyond its 10 campuses, five medical centers and three national laboratories. The University's presence is felt in each of California's 58 counties through a wide array of exemplary community partnerships, enriching cultural resources and innovative research programs. From health-care education for rural physicians to agricultural research advice for local farmers to college preparation efforts in nearly every public school, UC has a direct influence in your community. Find out more about UC programs in your district by visiting:

[www.universityofcalifornia.edu](http://www.universityofcalifornia.edu)



#### Assembly District 28 Programs

- Agricultural
- Campus Facilities
- Community
- Health
- K-12
- Research



#### UC SANTA CRUZ

**UC Santa Cruz located near District 28, is one of the region's largest employers and an academic leader in the sciences and linguistics. UC Santa Cruz** is affiliated with the prestigious research center and observatory at **Mt. Lick near San Jose** and **UC Santa Cruz Extension** offers an extensive array of classes and degrees at sites throughout **Silicon Valley**. UC Santa Cruz has a number of **innovative outreach programs that reach into Silicon Valley and beyond**, including the **New Teacher Center**, a national model for teacher professional development.



#### CENTER FOR INFORMATION TECHNOLOGY RESEARCH IN THE INTEREST OF SOCIETY

**The Center for Information Technology Research in the Interest of Society (CITRIS)** is a collaboration between UC Berkeley, UC Davis, UC Merced, UC Santa Cruz and private corporations, established to sponsor collaborative information technology research that will ultimately provide solutions to the social and commercial problems that affect the quality of life of all Californians. **Research will focus on energy efficiency, transportation, environmental monitoring, seismic safety, education and health care.**



#### UC AGRICULTURAL OUTREACH IN DISTRICT 28

**UC Agriculture and Natural Resources Cooperative Extension offices in Santa Clara, San Benito and Monterey counties** provide accessible and comprehensive research information for **local growers, ranchers, governments and the larger community**. **UC county advisors disseminate research-based information on a variety of topics in both Spanish and English** to promote farm safety, enhance water quality, improve nutrition and health, and teach youth leadership skills through 4-H.

**UCSF's Intensive Care Nursery (ICN) Follow-Up Program** assesses the neurodevelopmental progress of infants by providing parent support after discharge, early identification of developmental disabilities and liaison with community physicians and agencies. **An ICN satellite clinic is located in Salinas in District 28.** <http://www.ucsfhealth.org/childrens>

**The California Policy Research Center (CPRC)** applies UC's research expertise to the analysis, development and implementation of state and federal policy. CPRC provides policy-relevant research on statewide issues, oversees legislatively mandated research, and disseminates findings to the public. CPRC hosts such projects as the Welfare Policy Research Project, the California Program on Access to Care, the Latino Policy Institute and the California-Mexico Health Initiative. <http://www.ucop.edu/cprc/>



**The Puente Project** runs programs at 51 community colleges and 35 high schools to increase the enrollment of educationally underserved students in four-year universities. Puente works with **Gavilan Community**

**College in Gilroy.** To date, Puente has provided mentoring, teaching, and counseling for over 20,000 under-represented students. <http://www.puente.net>



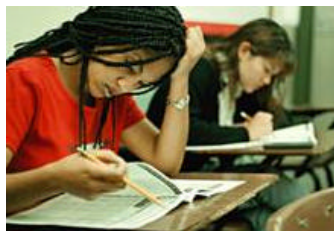
The first of its kind, **the New Teacher Center (NTC) at UCSC**, is a national resource dedicated to teacher development and the support of practices that promote excellence and diversity in America's teaching force. The NTC works with the **Hollister**

**and Gilroy Unified School Districts** to give teachers the opportunity to problem-solve with colleagues, learn teaching strategies and exchange lesson plans.

<http://www.newteachercenter.org>



**California Partners for Advanced Transit in Highways (PATH), at the UC Berkeley Institute of Transportation Studies** brings together faculty and students with private industry and state/local agencies to develop the research technologies that will improve California's transport systems. PATH is working to develop lasting solutions to the state's public transit challenges. <http://www.path.berkeley.edu>



**UC's Early Academic Outreach Program (EAOP)** has provided academic support, career advising, college counseling and motivational/skill-building workshops to help over 85,000 California students

realize their dreams of a college education. In the Bay Area, EAOP works with disadvantaged students in **37 high schools and 37 middle schools in Alameda, Contra Costa, San Francisco and Santa Clara counties** – including several **schools in Salinas.** <http://www.eaop.org>



**ArtsBridge** is a UC arts education and outreach program that works to provide hands-on arts instruction arts in under-performing public schools. Artsbridge works with **12 schools in Watsonville and Everett Alvarez High School in Salinas in District 28.** ArtsBridge also provides

scholarships to qualified students to teach the arts and conduct arts-related workshops in local communities. [www.bampfa.berkeley.edu/bca](http://www.bampfa.berkeley.edu/bca)

**UC's California Subject Matter Projects** develop teacher knowledge in K-12 subjects by enhancing instructional strategies, providing access to techniques that improve achievement, and developing 'teacher-leaders' – at over 500 California school districts. The program works with teachers at **several schools in Salinas in District 28.** With the expertise of teachers and UC faculty, the program annually trains thousands of teachers through intensive summer courses. <http://csmf.ucop.edu>

For a complete listing of UC programs in your district, access our on-line database at: [www.universityofcalifornia.edu](http://www.universityofcalifornia.edu)