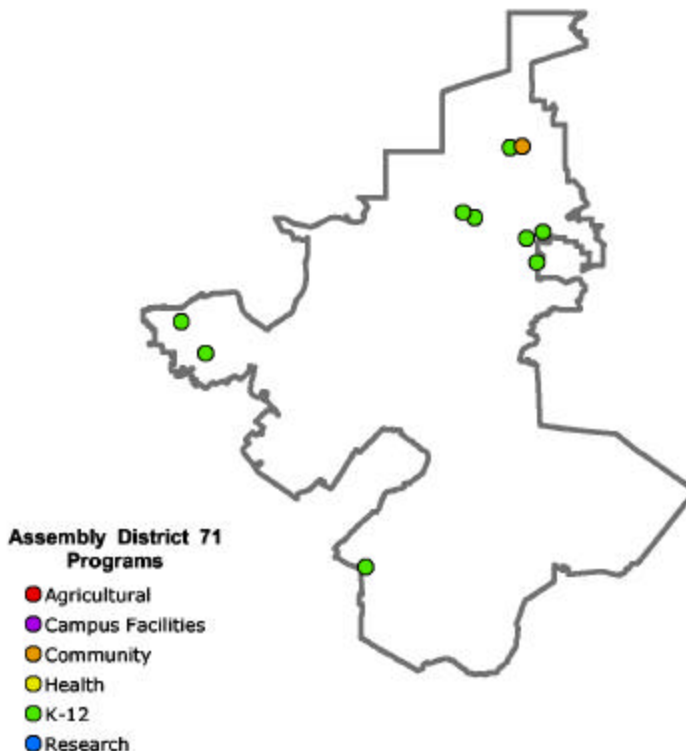


UC in Your District

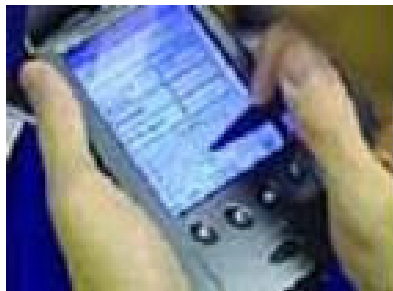
The University of California's reach goes well beyond its 10 campuses, five medical centers and three national laboratories. The University's presence is felt in each of California's 58 counties through a wide array of exemplary community partnerships, enriching cultural resources and innovative research programs. From healthcare education for rural physicians to agricultural research advice for local farmers to college preparation efforts in nearly every public school, UC has a direct influence in your community. Find out more about UC programs in your district by visiting:

www.universityofcalifornia.edu



UC IRVINE AND UC IRVINE MEDICAL CENTER

UC Irvine is one of the top American universities and has a \$2.35 billion economic impact on the Orange County economy. UC Irvine is responsible for the **creation of more than 15,000 jobs in Orange County** and hosts a School of Education, a School of Management and a School of Engineering as well as the internationally acclaimed Medical Center. The Medical Center is the **region's only academic medical center** and combines modern, cost-efficient technology with the latest research and best in care. The Medical Center, and its affiliated sites in **Orange and Long Beach, serve a disproportionate share of the area's poor, uninsured and veterans.**



CALIFORNIA INSTITUTE FOR TELECOMMUNICATIONS AND INFORMATION TECHNOLOGY (Cal-(IT)².

To help ensure that California maintains its leadership in the rapidly changing telecommunications and info-tech marketplace, the California Institute for Telecommunications and Information Technology (Cal-(IT)² **teams UC researchers with leading California telecommunications and computer companies to conduct research to bring the Internet and wireless technology to the next stage** in development. Researchers will investigate how wireless technologies will accelerate advances in environmental science, transportation, biomedicine and education. Cal-(IT) sites will be housed at **UC San Diego and UC Irvine.**



UC RIVERSIDE GENOMICS INSTITUTE

The UC Riverside Genomics Institute brings together faculty from every academic unit on campus to foster innovations that will make possible advancements in the quality of life - **from greater productivity in California's \$27 billion agricultural industry to improved human health and environmental quality.**

The Community Teaching Fellowships in Math and Science work to improve education in the Inland Empire. Affiliated with the National Science Foundation and the UC Riverside School of Education, the program works with **K-12 schools throughout Riverside and the greater Inland Empire, including Corona High in District 71.** The program provides mentoring for college mathematics/science majors who want to become teachers and also works directly in the classroom to improve teacher knowledge and student achievement in math and science. <http://www.alphacenter.ucr.edu>

The FARMS program aims to empower high school students about their futures through experiential learning and exposure to educational and career choices - all centered on agriculture and the environment. UC is a participating partner and runs a program at Norco High. www.farmsleaders.org



ArtsBridge is a UC arts education and outreach program that works with California public schools, **including Mission Viejo High in District 71,** to provide high quality arts education. ArtsBridge also provides scholarships to qualified students to teach the arts and conduct arts-related workshops in local communities.

<http://www.arts.uci.edu/ucartsbridge>

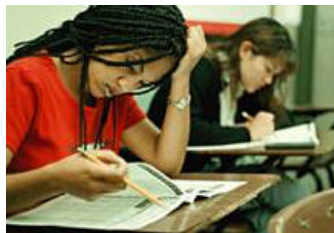
The UC Irvine Gifted Students Academy provides an environment that enables gifted students to experience the accelerated pace and advanced level curriculum of college. The program works with students **at several K-12 schools in District 71, including Centennial Vista High in Corona.** <http://www2.cfep.uci.edu/gsa/>



UC's MESA (Mathematics, Engineering & Science Achievement) works to prepare educationally disadvantaged students for four-year colleges at several schools in the region, **including Corona High and Santiago High in District 71.** <http://mesa.ucop.edu>

UC's Inland Empire Youth Education Motivation Program sends volunteers to make presentations in local schools about how education has assisted their career development. Individuals from UC Riverside visit **10-13 local schools in Riverside and Perris** each year. <http://www.alphacenter.ucr.edu>

UC Irvine's Criminology Outreach Program familiarizes **local high school students** with college course content, introduces intellectual pursuits and involves students in the type of policy debates that occur in the field of criminology. <http://www.cfep.uci.edu>



UC's Early Academic Outreach Program (EAOP) has provided academic support, college counseling and skill-building workshops to help over 85,000 California students realize their dreams of a college education. EAOP works with **several K-12**

schools in the region, including Auburndale Intermediate and Citrus Heights Intermediate in District 71. <http://www.eaop.org>

UC Riverside's CE-CERT program contributes to improved environmental quality and energy efficiency through interdisciplinary research and by providing educational opportunities for the next generation of engineers, scientists and policy-makers in the **Inland Empire.** <http://www.cert.ucr.edu>

UC's Division of Agriculture and Natural Resources Cooperative Extension provides accessible and comprehensive agricultural research information for local growers, ranchers, governments and the larger community through county advisors at the **Orange County, Riverside County and San Bernardino offices.** <http://ucanr.org>

For a complete listing of UC programs in your district, access our on-line database at: www.universityofcalifornia.edu