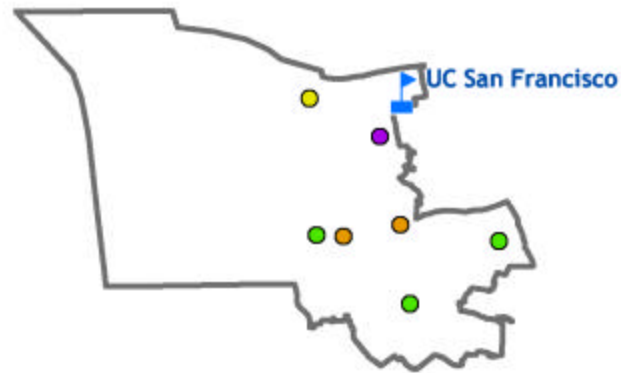


UC in Your District

The University of California's reach goes well beyond its 10 campuses, five medical centers and three national laboratories. The University's presence is felt in each of California's 58 counties through a wide array of exemplary community partnerships, enriching cultural resources and innovative research programs. From health-care education for rural physicians to agricultural research advice for local farmers to college preparation efforts in nearly every public school, UC has a direct influence in your community. Find out more about UC programs in your district by visiting:

www.universityofcalifornia.edu



Assembly District 12 Programs

-  UC Campuses
-  Agricultural
-  Campus Facilities
-  Community
-  Health
-  K-12
-  Research



UC SAN FRANCISCO

UC San Francisco is one of San Francisco's largest employers, contributing more than \$1 billion annually to the Bay Area economy and spawning biotechnology enterprises. UC San Francisco has created **three Nobel laureates** in the last decade and is a leader in patient care, biomedical research, and graduate health science education. **UCSF-Mission Bay**, located on 43 acres in San Francisco's Mission Bay district, will feature cutting-edge bio-medical facilities, libraries, open spaces and parks. The long-range goal is for biomedical and high-tech companies to spring up around the new campus, with workers living close by in Mission Bay neighborhoods.

INSTITUTE FOR QUANTITATIVE BIOMEDICAL RESEARCH (QB3)

QB3 is a cooperative effort between **UC and private industry** aimed at developing the cutting-edge research discoveries that will continue to drive the field of biomedicine. **QB3 will drive the new technologies and research that will spawn a host of biomedical innovations and train thousands of researchers in the Bay Area.** QB3 will be housed at two new buildings on the UC Santa Cruz campus, a new UC Berkeley facility and **a site at UC San Francisco's Mission Bay campus.**

UCSF MEDICAL CENTER

The hospitals operated by UCSF and UCSF's affiliated hospitals are among the world's greatest health care institutions. The medical center, consistently ranks among the best hospitals in the nation and with its affiliated hospitals, handles one-half of all hospital admissions in San Francisco and a disproportionate share of the area's poor and uninsured.

The Bay Area Social Services Consortium (BASSC) is composed of county Social Service Directors and the graduate social work programs at UC Berkeley, CSU Sacramento, CSU San Jose and CSU San Francisco. BASSC develops educational, applied research and policy development programs in collaboration with county agency administrators and staff.

<http://cssr.berkeley.edu/bassc/>

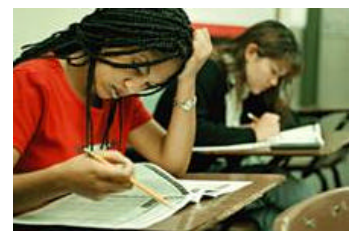


The UCSF Center for Science Education and Outreach coordinates programs that help underrepresented students explore their academic interests

and plan for college. One affiliate, the **Science & Health Education Partnership**, a collaboration between UCSF and SFUSD, has developed advanced K-12 science education programs. <http://student.ucsf.edu/ucforyou/home>

UCSF research was among the first to identify HIV as the causative agent of the disease and the campus continues to lead in HIV treatment and research programs. **UCSF AIDS Health Project** is the sole provider of HIV-specific mental health programs and **HIV InSite**, is a comprehensive resource for treatment, prevention and policy, which links UCSF expertise with academics, doctors and patients worldwide.

<http://hivinsite.ucsf.edu/InSite.jsp>



UC's Early Academic Outreach Program (EAOP) has provided academic support, career advising, college counseling and motivational/skill-building workshops to help over 85,000 California students realize their dreams of a

college education. **In the Bay Area, EAOP works with disadvantaged students in 37 high schools and 37 middle schools in Alameda, Contra Costa, San Francisco and Santa Clara counties.** <http://www.eaop.org>

The Mental Health Research Group at UC Berkeley's School of Social Welfare works with California counties to pursue timely research on issues in mental health such as residential care, psychiatric emergency services and homelessness. <http://socialwelfare.berkeley.edu>

UC Berkeley's Environmental Sciences Program and the Department of Ethnic Studies have worked in partnership with the Galileo Academy of Science and Technology and the Urban Watershed Project to implement a three-year high school environmental science course – which incorporates field study, mentoring and web-based learning under the guidance of the National Park Service at the Presidio. <http://www.kernsite.com/uwp/edservic.htm>



The History through Literature Project within the UC Berkeley International/Area Studies department, builds curriculums for K-12 teachers on topics

ranging from China's literary history to the spread of Islam. Seminars and an online database of lesson plans support thousands of teachers statewide.

<http://www.ias.berkeley.edu/orias>

UCSF's Breast Cancer Early Detection Program Regional Partnership, at the Comprehensive Cancer Center, provides breast cancer screening, diagnostic services, and outreach to low-income women over 40 in this district. UCSF is a national leader in breast cancer research, treatment and prevention services. <http://www.ucsfbreastcarecenter.org>



UC Berkeley's Lawrence Hall of Science Alliance for Collaborative Change in School Systems (ACCESS) works with the San Francisco Unified School District to strengthen the capacity of secondary schools to prepare students from historically under-represented groups for college.

<http://www.lhs.berkeley.edu/>

The Institute of East Asian Studies at UC Berkeley has an interactive electronic tool that helps schools build better curriculums in world history, culture and geography. Students use simulated atlases and other techniques to explore the history, culture and economy of Asian countries.

<http://ecai.org/projects/projectexamples.asp>

UC Cooperative Extension advisors at the **San Francisco and San Mateo county offices** work with families, children and local agencies in several languages to improve nutrition, reduce child obesity, and engage youth in educational **4-H activities**. <http://ucanr.org>

For a complete listing of UC programs in your district, access our online database at: www.universityofcalifornia.edu