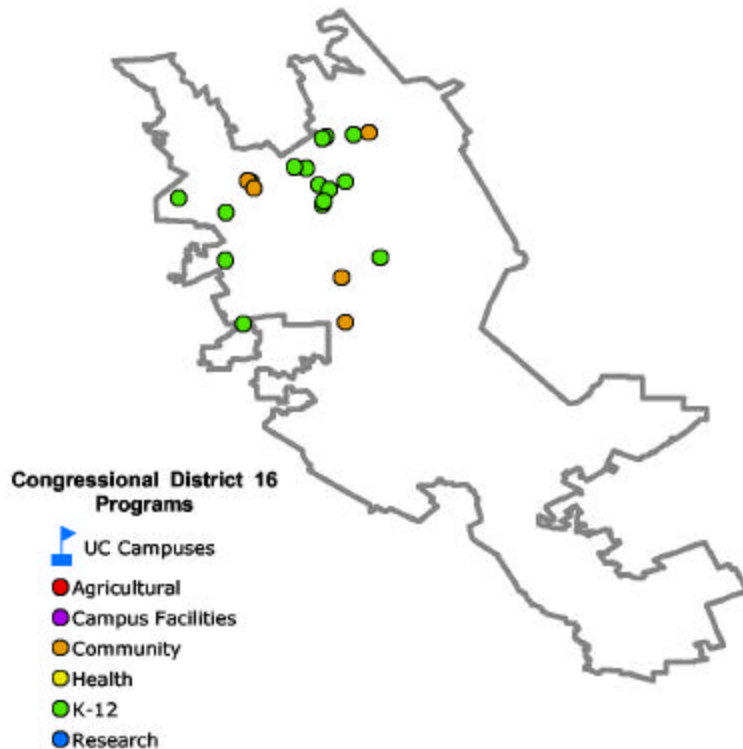


UC at Work in Your District

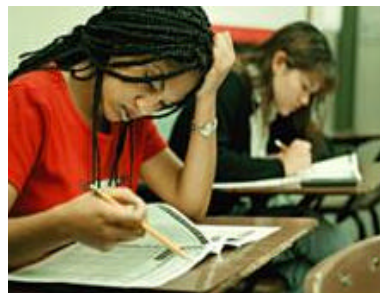
The University of California's reach goes well beyond its 10 campuses, five medical centers and three national laboratories. The University's presence is felt in each of California's 58 counties through a wide array of exemplary community partnerships, enriching cultural resources and innovative research programs. From health-care education for rural physicians to agricultural research advice for local farmers to college preparation efforts in nearly every public school, UC has a direct influence in your community. Find out more about UC programs in your district by visiting:

www.universityofcalifornia.edu



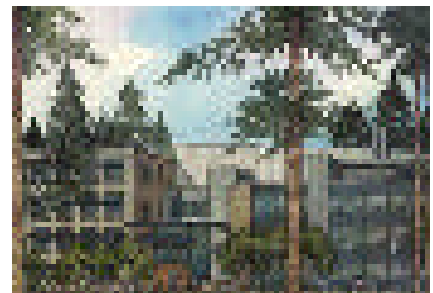
UC SANTA CRUZ

UC Santa Cruz, located near the 16th Congressional District, is one of the region's largest employers and an academic leader in the sciences and linguistics. UC Santa Cruz is affiliated with the prestigious research center and observatory at Mt. Lick near San Jose. UC Santa Cruz Extension offers classes and degrees at sites throughout Silicon Valley. UC Santa Cruz has a number of innovative outreach programs that reach into Silicon Valley and beyond, including the New Teacher Center, a national model for teacher professional development.



UC's K-12 OUTREACH

UC's Early Academic Outreach Program (EAOP) provides academic support, career advising, college counseling and motivational/skill-building workshops to help over 85,000 California students realize their dreams of a college education. In the Bay Area, EAOP works with disadvantaged students in 37 high schools and 37 middle schools in Alameda, Contra Costa, San Francisco and Santa Clara counties



INSTITUTE FOR QUANTITATIVE BIOMEDICAL RESEARCH (QB 3)

The California Institute for Quantitative Biomedical Research (QB 3) is a cooperative effort between UC Santa Cruz, UC Berkeley, UC San Francisco and private industry aimed at developing the cutting-edge research discoveries that will continue to drive the field of biomedicine. QB 3 will drive the new technologies and research that will spawn a host of biomedical innovations and train thousands of researchers in the Bay Area and Silicon Valley. QB 3 includes two new buildings at UC Santa Cruz, a new UC Berkeley facility and a site at UC San Francisco's Mission Bay research park.



The UC Santa Cruz African American Theater Arts Troupe is dedicated to providing an outlet for the creativity and talents of underrepresented students through plays, presentations and workshops on campus and throughout the

community. The troupe provides scholarships, mentoring and performances to local K-12 schools, including **Oak Grove High in San Jose**. <http://www.frazadelic.com>

The California Policy Research Center (CPRC) applies UC's research expertise to the analysis, development and implementation of state and federal policy. CPRC provides policy-relevant research on statewide issues, oversees legislatively mandated research, and disseminates findings through publications and briefings. CPRC hosts such projects as the Welfare Policy Research Project, the California Program on Access to Care, the Latino Policy Institute and the California-Mexico Health Initiative. <http://www.ucop.edu/cprc/>

The Bay Area Social Services Consortium (BASSC) is composed of county Social Service Directors and the graduate social work programs at UC Berkeley, CSU Sacramento, CSU San Jose and CSU San Francisco. BASSC develops educational, applied research and policy development programs in collaboration with county agency administrators and staff. <http://cssr.berkeley.edu/bassc/>



UC's MESA program works to prepare educationally disadvantaged students for 4-year colleges at several schools in the 16th Congressional District. **The MESA California Community College Program** increases the number of math/science majors who

successfully transfer and receive 4-year degrees. **MESA Success Through Collaboration (STC)** works with American Indian tribes to meet the same goal with respect to Native Americans. **STC sites include a joint UC/CSU MESA effort at San Jose State and a site at UC Santa Cruz**. <http://mesa.ucop.edu>

The first of its kind, **the New Teacher Center (NTC) at UCSC**, is a national resource dedicated to teacher development and the support of practices that promote excellence and diversity in America's teaching force. **At sites in San Jose, including the Eastside Union and San Jose School Districts**, New Teacher Seminars give teachers the opportunity to problem-solve with colleagues, learn teaching strategies and exchange lesson plans. <http://www.newteachercenter.org>



UC's Early Academic Outreach Program (EAOP) provides academic support, career advising, college counseling and motivational/skill-building workshops to help over 85,000 California students realize their dreams of a college education.

In the Bay Area, EAOP works with disadvantaged students in 37 high schools and 37 middle schools in Alameda, Contra Costa, San Francisco and Santa Clara counties.

<http://www.eaop.org>

The Berkeley Pledge within the **School and University Partnership Program**, matches UC outreach with K-12 schools. Faculty and students help with curriculum, teacher training, mentoring, summer school and in-class support. As a result, students in more than 40 Bay Area schools have dramatically improved their scores on standardized tests in math, reading and writing. <http://students.berkeley.edu/outreach>

UC's California Subject Matter Projects develop teacher knowledge in K-12 subject areas by enhancing instructional strategies, providing access to the techniques that improve student achievement, and developing 'teacher-leaders'. **With the expertise of teachers and UC faculty, the program annually trains thousands of teachers through intensive summer courses**. <http://csmp.ucop.edu>



The Puente Project runs programs at 51 community colleges and 35 high schools throughout California, **including 4 high schools in San Jose**, in order to increase the enrollment of educationally underserved students in four-year

universities. To date, Puente has provided mentoring, teaching, and counseling for over 20,000 under-represented students. <http://www.puente.net>

The UC Berkeley Interactive University (IU), serves as a national model in developing innovative internet-based learning for K-12 teachers and students. The UCB program is targeted at under-performing schools in several Bay Area school districts. <http://iu.berkeley.edu/iu/>

For a complete listing of UC programs in your district, access our online database at: www.universityofcalifornia.edu