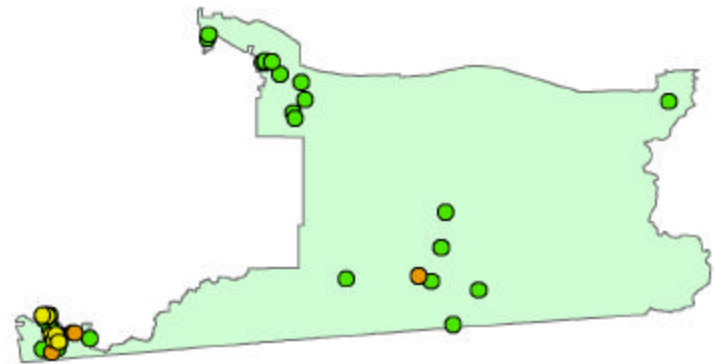


### UC in Your District

The University of California's reach goes well beyond its 10 campuses, five medical centers and three national laboratories. The University's presence is felt in each of California's 58 counties through a wide array of exemplary community partnerships, enriching cultural resources and innovative research programs. From health-care education for rural physicians to agricultural research advice for local farmers to college preparation efforts in nearly every public school, UC has a direct influence in your community. Find out more about UC programs in your district by visiting:

[www.universityofcalifornia.edu](http://www.universityofcalifornia.edu)



#### Senate District 40 Programs

-  UC Campuses
-  Agricultural
-  Campus Facilities
-  Community
-  Health
-  K-12
-  Research



#### THE UCSD MEDICAL CENTER

**UC San Diego Medical Center provides services throughout District 40** and is the region's only academic medical center. **The medical center cares for a disproportionate share of the region's poor and uninsured patients and is the county's only Level 1 Trauma Center.** UCSD Medical Center includes a Regional Burn Center, a National Institutes of Health Clinical Research Center, the Infant Special Care Center and the region's only National Cancer Institute. The LA Jolla Medical Center site offers a range of services and includes the **Shiley Eye Center**, which provides patients with vision services.



#### THE UC SAN DIEGO TEACHER EDUCATION PROGRAM (TEP)

The UC San Diego Teacher Education Program (TEP) works directly with K-12 schools and teachers in the greater San Diego area, including **providing hands-on teacher training at schools in District 40.** UC San Diego has also launched a program of graduate study leading to the Education Doctorate. The doctoral program will provide a research-based program in education **tailored exclusively for K-12 and post-secondary professional educators in the area.** The **UCSD Preuss Charter School** will provide an intensive college prep curriculum to more than 700 low-income 6-12<sup>th</sup> graders by 2004-05. **In 2002-03, 143 students from District 40 were enrolled at the school.**



#### CALIFORNIA INSTITUTE FOR TELECOMMUNICATIONS AND INFORMATION TECHNOLOGY

To help ensure that California maintains its leadership in the telecommunications and info-tech marketplace, the **California Institute for Telecommunications and Information Technology (Cal-IT)<sup>2</sup>** teams UC researchers with leading California telecomm and computer companies to bring wireless technology to the next stage. Researchers will investigate how these technologies will bring advances in environmental science, transportation, biomedicine and education.



**The Puente Project** runs programs at 51 community colleges and 35 high schools throughout California to increase the enrollment and retention of educationally underserved students in four-year universities. Puente works with **Castle Park High in**

**Chula Vista and Imperial College in District 40.** Puente students graduate from 4-year universities at twice the average rate. <http://www.puente.net>

**The California Policy Research Center (CPRC)** applies UC's research expertise to the analysis, development and implementation of state and federal policy. CPRC provides policy-relevant UC-led research on statewide issues, oversees legislatively mandated research projects, and disseminates research findings through publications and special briefings. CPRC also hosts projects such as the Welfare Policy Research Project (WPRP), the Latino Policy Institute and the California-Mexico Health Initiative (CMHI). <http://www.ucop.edu/cprc/>



**UC's MESA (Mathematics, Engineering & Science Achievement)** works to prepare educationally disadvantaged students for four-year colleges. MESA works with several schools in **District 40, including Lincoln High, Eisenhower Elementary and**

**Hoover Elementary in Indio and Castle Park High and Castle Park Middle in Chula Vista.** <http://mesa.ucop.edu>

Via a dedicated **Web-based tutoring program** that includes cameras and writing pads, UCSD undergraduates interact in real time with math classes at **De Anza Junior High School in El Centro.** The students who participate are allowed to find answers to the ever-popular teenage concern: "Am I ever going to use what I learn in school in real life?"

**Healthcare Access to Schools (HATS)** helps children from low-income families obtain health insurance. Since its inception, UC San Diego has provided funds and technical assistance to dozens of schools, **including seven schools in Chula Vista.** <http://health.ucsd.edu>

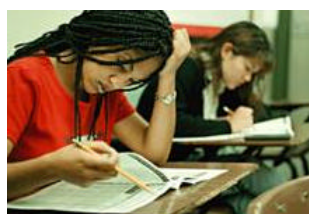


**ArtsBridge** works in partnership with California public schools to provide high quality arts education and scholarships to K-12 school children. **ArtsBridge works with several schools in District 40, including Central Elementary in National City, Kennedy Elementary and Burbank Elementary.**



The **UC Riverside Genomics Institute** brings together faculty from every academic unit on campus to foster innovations that will make possible advancements in the quality of life - **from greater productivity in California's \$27-billion agricultural industry to more nutritious foods to improved human health and environmental quality.**

**The UC Irvine Gifted Students Academy** was developed to allow gifted students to experience the accelerated pace and advanced level curriculum of college. The Gifted Students Academy has worked with students at **Indio High and West Indio Middle in District 40.** <http://www2.cfep.uci.edu/gsa/>



**UC's Early Academic Outreach Program (EAOP)** has provided academic support, career advising, college counseling and skill-building workshops to help over 85,000 California students realize their dreams of a college education.

EAOP works with **several K-12 schools in District 40, including Cathedral City High, Indio High, Indio Middle and Workman Middle.** <http://eaop.org>

**At Sweetwater High,** UCSD and Cal-SOAP bring teachers, administrators, parents and students together through the federally funded **Gaining Early Awareness and Readiness for Undergraduate Programs (GEAR UP) project.** Teacher development, student preparation and motivation and parental education are improved in order to help students succeed in college.

**Upward Bound Classic** at UCSD motivates and prepares **Mar Vista, Chula Vista and Sweetwater High** students for college by immersing them in a variety of academic activities throughout the year. **The Upward Bound Math and Science Program** encourages students at **Castle Park, Calipatria, Brawley Union and El Centro's Central Union high schools** to pursue college degrees in math, science, engineering and computer science. <http://sea.ucsd.edu>

**UC's Division of Agriculture and Natural Resources Cooperative Extension** provides accessible and comprehensive agricultural research information for local growers, ranchers, governments and the larger community through county advisors at the **San Diego and Imperial County offices.** UC advisors work with local youth through 4-H projects and after-school activities; provide hands-on assistance to nursery operators and farmers; and work with boat owners to reduce impacts on water quality. <http://ucanr.org>

For a complete listing of UC programs in your district, access our online database at: [www.universityofcalifornia.edu](http://www.universityofcalifornia.edu)