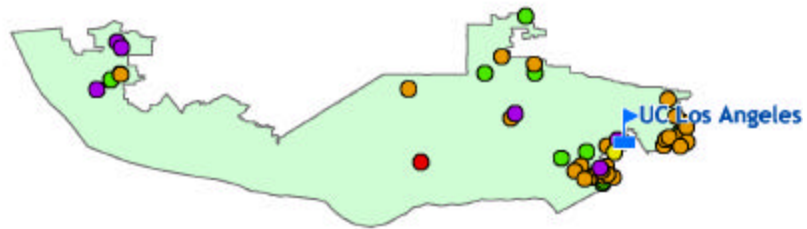


UC in Your District

The University of California's reach goes well beyond its 10 campuses, five medical centers and three national laboratories. The University's presence is felt in each of California's 58 counties through a wide array of exemplary community partnerships, enriching cultural resources and innovative research programs. From health-care education for rural physicians to agricultural research advice for local farmers to college preparation efforts in nearly every public school, UC has a direct influence in your community. Find out more about UC programs in your district by visiting:

www.universityofcalifornia.edu



Senate District 23 Programs

- UC Campuses
- Agricultural
- Campus Facilities
- Community
- Health
- K-12
- Research



UCLA AND UCLA MEDICAL CENTER

UCLA in District 23, is one of the country's top 10 research universities and has a \$4.34 billion annual economic impact on the state economy. The UCLA faculty is distinguished internationally – with five current Nobel Laureates. **UCLA Medical Center** is ranked the #1 hospital in the West by *U.S. News and World Report*. More than 300,000 people, **including a disproportionate share of the state's poor and uninsured**, are cared for at UCLA each year. The medical center is an acclaimed training site for physicians and a preeminent research center that drives innovations in life-saving drugs and surgical procedures.



CALIFORNIA NANOSYSTEMS INSTITUTE (CNSI)

CNSI will facilitate a public/private approach to developing the information, biomedical, and manufacturing technologies that will dominate science and the economy in the 21st century. The institute will provide a world-class intellectual and physical environment that supports collaboration among California's university, industry and national lab scientists. **The institute will be located at UCLA and UC Santa Barbara and will include corporate-sponsored incubator labs.**



UC NATURAL RESERVES

The UC-affiliated Stunt Ranch Santa Monica Mountains Reserve in District 23, is located in the Cold Creek watershed of Malibu Creek and is one of the most pristine and biologically diverse watersheds in the Santa Monica Mountains. The reserve is the site of much environmental and anthropological research and also provides educational and outreach opportunities for the **local community and K-12 schools throughout the area.** **The site is one of 34 UC-affiliated natural reserves in the state.**

UCLA's Regional Oncology Centers, affiliated with the world-renowned UCLA Jonsson Comprehensive Cancer Center, **provide cancer care services and investigative clinical trials at sites in the Santa Clarita Valley, Santa Monica and Pasadena.** Patients who come to UCLA centers for cancer care benefit from the most advanced forms of therapy available, and from a variety of supportive services.

<http://www.healthcare.ucla.edu>

UC Santa Barbara sponsors the Engaging Latino Communities for Education (ENLACE) initiative at five schools in Oxnard in District 23. The program is aimed at strengthening the educational pipeline and increasing opportunities for Latino's to enter and complete college.

<http://research.ucsb.edu/ccs/enlace>



UC's MESA (Mathematics, Engineering & Science Achievement) works to prepare educationally disadvantaged students for four-year colleges at several schools in **District 23 – including Hueneme High. The MESA California Community College Program** increases the number of math and science

majors who successfully transfer and receive degrees from four-year universities and works with **Oxnard Community College.** <http://mesa.ucop.edu>



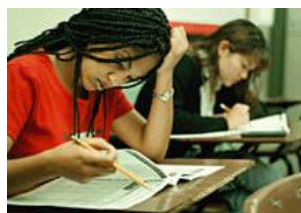
The VA Greater Los Angeles Healthcare System is **an affiliate of the UCLA Medical Center** and provides a full range of **medical care to thousands of veterans in the region.** The system houses a teaching hospital and provides a full range of

patient care services using state-of-the-art technology at a satellite clinic in **Oxnard in District 23.** <http://www.va.gov>

UniCamp operates educational and recreational programs for children from low-income families at **two sites in Santa Monica in District 23.** UniCamp helps build self-esteem and promote education with underrepresented students. www.unicamp.org



The Puente Project runs programs at 51 community colleges and 35 high schools throughout California to increase the enrollment and retention of educationally underserved students in four-year universities and works with **Oxnard Community College in District 23.** <http://www.puente.net>



UC's Early Academic Outreach Program (EAOP) has provided academic support, career advising, college counseling and skill-building workshops to help over 85,000 California students realize their dreams of a college education. EAOP works with

several **K-12 schools in District 23, including Adams Middle in Santa Monica and Hueneme High in Oxnard.**

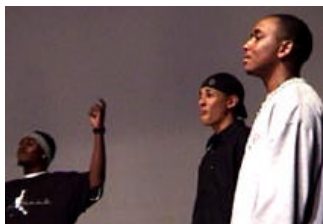
<http://eaop.org>



UC's Division of Agriculture and Natural Resources Cooperative Extension provides accessible and comprehensive agricultural research information for local growers, ranchers, governments and the larger community at the **Ventura and Los Angeles County offices.** UC advisors also work to improve nutrition, reduce child

obesity, ease the transition from welfare to work and engage 4-H youth in educational activities. <http://www.ucanr.org>

The UCLA Mobile Eye Clinic provides free eye examinations to more than 5,000 people annually in the **greater Los Angeles** area at schools, agencies working with foster children and the elderly, community organizations, and homeless clinics.



UC Santa Cruz's African American Theater Arts Troupe is dedicated to providing an outlet for the creativity of underrepresented students through plays, presentations and workshops on campus and throughout the

community. The troupe provides scholarships, mentoring and performances to **K-12 schools and community colleges throughout the region, including Hollywood High in District 23.** <http://www.frazadelic.com>

UC's California Subject Matter Projects develop teacher knowledge in K-12 subject areas by enhancing instructional strategies and developing 'teacher-leaders' – at over 500 California school districts. With the expertise of teachers and UC faculty, the program annually trains thousands of teachers, **including those at Muir Elementary in Santa Monica in District 23.** <http://csmp.ucop.edu>

UC's Design for Sharing purchases thousands of tickets to events presented by UCLA Performing Arts. Tickets are distributed through social service agencies in **Agoura Hills, Malibu and Santa Monica** for those who could not otherwise afford to attend the events. www.performingarts.ucla.edu

For a complete listing of UC programs in your district, access our online database at: www.universityofcalifornia.edu