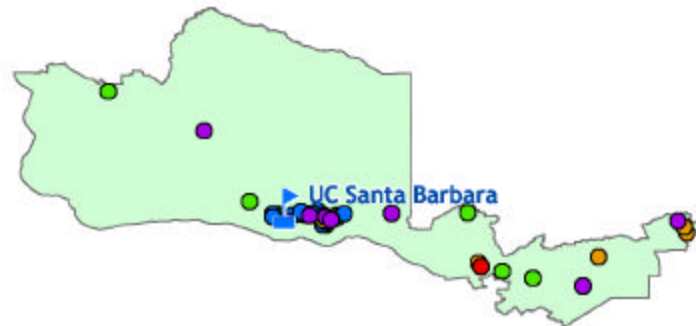


## UC in Your District

The University of California's reach goes well beyond its 10 campuses, five medical centers and three national laboratories. The University's presence is felt in each of California's 58 counties through a wide array of exemplary community partnerships, enriching cultural resources and innovative research programs. From health-care education for rural physicians to agricultural research advice for local farmers to college preparation efforts in nearly every public school, UC has a direct influence in your community. Find out more about UC programs in your district by visiting:

[www.universityofcalifornia.edu](http://www.universityofcalifornia.edu)



### Senate District 19 Programs

-  UC Campuses
-  Agricultural
-  Campus Facilities
-  Community
-  Health
-  K-12
-  Research



### UC SANTA BARBARA

**UC Santa Barbara** – in District 19, is the largest employer in Santa Barbara County, with more than 9,100 employees. **UCSB's annual economic impact is \$239 million.** The more than 16,000 UC alumni in the region provide a highly skilled workforce for the region's growing technology sector. The campus is home to eight National Research Centers, six of which are supported by the National Science Foundation. Alumni and faculty members of the College of Engineering have **started nearly 100 high-tech companies, about half of them located on California's Central Coast.**



### UCSB NATURAL RESERVES

**UCSB administers several natural reserve sites** that protect unique local environments, serve as invaluable research laboratories and educate the public. Reserves include the **Carpinteria Salt Marsh Reserve**, which protects an important Southern California estuary, and the **Santa Cruz Island Reserve**, which protects the breeding grounds of harbor seals and the threatened island fox. Both reserves **host a range of public education and outreach programs for local K-12 schools and the larger community.**



### THE CALIFORNIA NANOSYSTEMS INSTITUTE (CNSI)

CNSI will facilitate **a public/private approach to developing the information, biomedical, and manufacturing technologies that will dominate science and the economy in the 21st century.** The Institute will provide a world-class intellectual and physical environment that **supports collaboration among California's university, industry and national laboratory scientists.** The Institute will be housed at **UCLA and UCSB** and will include corporate-sponsored incubator labs.



**The Puente Project** runs programs at 51 community colleges and 35 high schools throughout California to increase the enrollment and retention of educationally underserved students in four-year universities and works

with **Oxnard Community College in District 19.**

<http://www.puente.net>

**UCLA's Regional Oncology Centers**, affiliated with the world-renowned UCLA Jonsson Comprehensive Cancer Center, provide comprehensive cancer care services and investigative clinical trials at **sites in Santa Barbara**. Patients who come to UCLA centers for cancer care benefit from the most advanced forms of therapy available, and from a variety of supportive services. <http://cancer.mednet.ucla.edu/clinical>



**UC's MESA (Mathematics, Engineering & Science Achievement)** works to prepare students for four-year colleges at several schools in **District 19** – including **Robert J. Frank Intermediate, Fremont Intermediate, Hueneme High, Oxnard High, Rio Mesa High, La**

**Cumbre Middle, Santa Barbara Junior High and Santa Barbara Senior High.** <http://mesa.ucop.edu>

**California Partners for Advanced Transit in Highways (PATH), at the UC Institute of Transportation Studies** brings together faculty and students with private industry and state/local agencies to develop the research technologies that will improve California's transport systems – including developing solutions for the state's public transit challenges. <http://www.path.berkeley.edu>



**The VA Greater Los Angeles Healthcare System** is an affiliate of the UCLA Medical Center and **provides a full range of medical care to veterans in the region.** The system houses a teaching hospital, and provides a

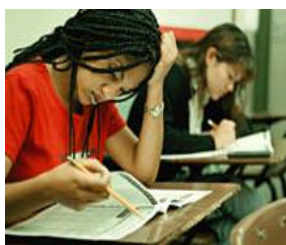
full range of patient care services using state-of-the-art technology. Outpatient clinics are located in **Santa Barbara, Lancaster, Lompoc, Oxnard, San Luis Obispo, Santa Paula and Ventura.** <http://www.va.gov>



**UCSB's Coal Oil Point Natural Reserve** is one of the best remaining examples of a preserved coastal-strand environment in Southern California and protects a wide variety of coastal and estuarine habitats. Located adjacent to the Santa Barbara campus, the reserve provides a unique and accessible research and

teaching resource that supports UC research and teaching in fields as diverse as **ecology, natural history, marine biology, zoology, and environmental studies.** <http://nrs.ucop.edu>

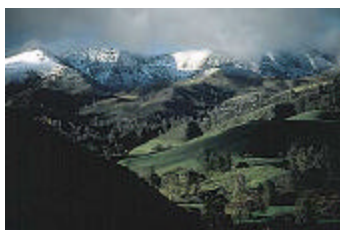
**UC's Design for Sharing** purchases thousands of tickets to events presented by UCLA Performing Arts. Tickets are distributed through social service agencies for those who could not otherwise afford to attend the events – **including Moorpark Community College and Northridge's Morning Star Church** – both in District 19. [www.performingarts.ucla.edu](http://www.performingarts.ucla.edu)



**UC's Early Academic Outreach Program (EAOP)** provides academic support, college counseling and skill-building workshops to help over 85,000 California students realize their dreams of a college education. EAOP works with **several K-12 schools in District 19.**

<http://eaop.org>

**UC Cooperative Extension advisors at the Ventura, Los Angeles and Santa Barbara County offices** work with families to improve nutrition and to engage 4-H youth in educational activities. UCCE advisors also provide growers with research-based information for pest, disease and water quality management. <http://ucanr.org>



**UCSB's Sedgwick Reserve** is an invaluable research site and coordinates a variety of public outreach programs. Outreach includes the **"Kids in Nature"** program that combines hands-on learning for fifth-sixth grade students at the UCSB Museum of

Systematics and Ecology, with visits to the reserve for experiences in botany and habitat restoration.

<http://nrs.ucop.edu>

**UCSB has a University Extension satellite facility in Ventura that has been in operation for over 25 years.** The program provides a range of educational opportunities for the local community. Courses are offered year-round, with evening and weekend classes designed to fit into busy schedules.

<http://www.extension.ucsb.edu/>