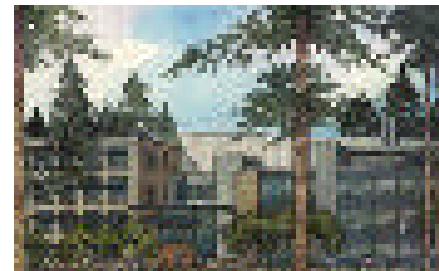
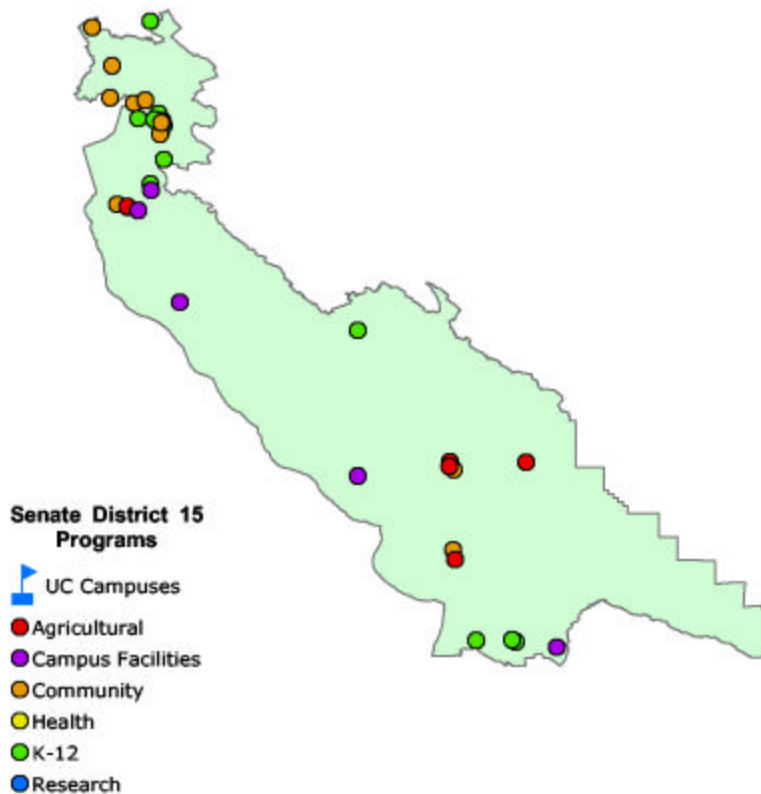


### UC in Your District

The University of California's reach goes well beyond its 10 campuses, five medical centers and three national laboratories. The University's presence is felt in each of California's 58 counties through a wide array of exemplary community partnerships, enriching cultural resources and innovative research programs. From health-care education for rural physicians to agricultural research advice for local farmers to college preparation efforts in nearly every public school, UC has a direct influence in your community. Find out more about UC programs in your district by visiting:

[www.universityofcalifornia.edu](http://www.universityofcalifornia.edu)



### UC SANTA CRUZ

**UC Santa Cruz**- near District 15, is an academic leader in the sciences and humanities, with a strong arts program and world-renowned faculty members. UCSC is the region's largest employer and was responsible for \$787 million of economic activity in Santa Cruz County in 1999-2000. UC Santa Cruz is affiliated with the prestigious research center and observatory at **Mt. Lick near San Jose** and UC Santa Cruz Extension offers an extensive array of **classes and degrees at sites throughout Silicon Valley**. UC Santa Cruz has a number of innovative K-12 programs that reach into Silicon Valley and beyond.

### NEW TEACHER CENTER (NTC) AT UC SANTA CRUZ

The first of its kind, the **New Teacher Center (NTC) at UC Santa Cruz** is a national resource dedicated to teacher development and the support of practices that promote excellence in America's teaching force. At school sites throughout **Santa Cruz and Silicon Valley**, **New Teacher Seminars** give teachers the opportunity to problem-solve with colleagues, learn new teaching strategies and exchange lesson plans. The NTC works with the **North Monterey County Unified School District and Gilroy Unified School District**.

### INSTITUTE FOR QUANTITATIVE BIOMEDICAL RESEARCH (QB3)

The **California Institute for Quantitative Biomedical Research (QB3)** is a cooperative effort between **UC Santa Cruz**, UC Berkeley, UC San Francisco and private industry aimed at developing the cutting-edge research discoveries that will continue to drive the field of biomedicine. QB3 will drive the new technologies and research that will spawn a host of biomedical innovations and **train thousands of researchers in the Bay Area and Silicon Valley**. QB3 includes **two new buildings at UC Santa Cruz**, a new UC Berkeley facility and a site at UC San Francisco's Mission Bay research park.

**UCSF's Intensive Care Nursery (ICN) Follow-Up Program** assesses the neurodevelopmental progress of infants by providing parent support after discharge, early identification of developmental disabilities and liaison with community physicians and agencies. **An ICN satellite clinic is located in Salinas in District 15.** <http://www.ucsfhealth.org>



The Puente Project runs programs at 51 community colleges and 35 high schools throughout California, including **Cabrillo College, Gavilan College and Everett Alvarez High in Salinas in District 15.** Puente increase the enrollment of educationally

underserved students in four-year universities. To date, Puente has provided mentoring, teaching, and counseling for over 20,000 under-represented students. <http://www.puente.net>

**The Oiled Wildlife Care Network** strives to ensure that wildlife exposed to petroleum products in the environment receive treatment. The program is managed with the Wildlife Health Center located in the UC Davis School of Veterinary Medicine and **operates six stations along the Santa Cruz - San Luis Obispo coast within District 15,** including a site at the **UC Santa Cruz Avian Facility.** [www.vetmed.ucdavis.edu/owcn](http://www.vetmed.ucdavis.edu/owcn)



**UC Santa Cruz's African American Theater Arts Troupe** is dedicated to providing an outlet for the creativity and talents of underrepresented students through plays, presentations and workshops on campus and throughout the community. The

troupe provides scholarships, mentoring and performances to local K-12 schools, **including Santa Cruz High and Seaside High in Pacific Grove in District 15.**

<http://www.frazadelic.com>



**ArtsBridge** is a UC arts education and outreach program that works to provide hands-on arts instruction in under-performing public schools – **including 15 schools in Santa Cruz and Castroville within District 15.**

ArtsBridge also provides scholarships to qualified students to teach the arts and conduct arts-related workshops in local

communities. <http://arts.ucsc.edu/artsbridge>

**UC Cooperative Extension Offices in Santa Cruz, Monterey and San Benito Counties** provide accessible and comprehensive research information for local growers, ranchers, governments and the larger community. UC advisors also work with children and families to improve nutrition and engage 4-H youth in educational activities. <http://www.ucanr.org>

**UC's California Subject Matter Projects** develop teacher knowledge in major K-12 subject areas by enhancing instructional strategies, providing access to the techniques that improve student achievement, and developing 'teacher-leaders' – at over 500 California school districts. With the expertise of teachers and UC faculty, the program annually trains thousands of teachers through intensive summer courses at **area schools.** <http://csmp.ucop.edu>



**The Center for Information Technology Research in the Interest of Society (CITRIS)** is a collaboration between UC Berkeley, UC Davis, UC Merced, **UC Santa Cruz** and private corporations, established to sponsor collaborative information technology research that will ultimately provide solutions

to challenge social and commercial problems affecting the quality of life of all Californians. Research will focus on energy efficiency, transportation, environmental monitoring, seismic safety, education, cultural research and health care.

<http://www.citris.berkeley.edu/>

**Shakespeare to Go** is comprised of UC Santa Cruz students who bring classic performances to K-12 and community colleges throughout a four-county area, **including 15 K-12 and community colleges in District 15.**

[www.shakespearesantacruz.org](http://www.shakespearesantacruz.org)



**California Partners for Advanced Transit in Highways (PATH), at the UC Berkeley Institute of Transportation Studies,** brings together faculty and students with private industry and state/local agencies to develop the research

technologies that will improve California's transport systems. Current research focuses on developing solutions to the state's public transit challenges. <http://www.path.berkeley.edu>

For a complete listing of UC programs in your district, access our online database at: [www.universityofcalifornia.edu](http://www.universityofcalifornia.edu)