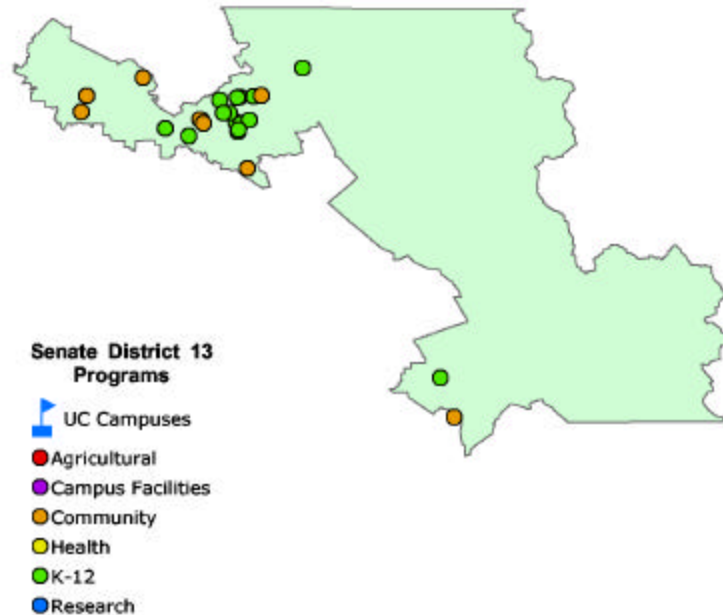


UC at Work in Your District

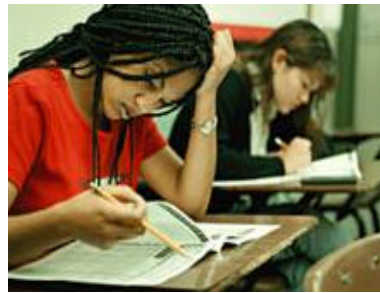
The University of California's reach goes well beyond its 10 campuses, five medical centers and three national laboratories. The University's presence is felt in each of California's 58 counties through a wide array of exemplary community partnerships, enriching cultural resources and innovative research programs. From health-care education for rural physicians to agricultural research advice for local farmers to college preparation efforts in nearly every public school, UC has a direct influence in your community. Find out more about UC programs in your district by visiting:

www.universityofcalifornia.edu



UC SANTA CRUZ

UC Santa Cruz located near District 13, is one of the region's largest employers and an academic leader in the sciences and linguistics. **UC Santa Cruz** is affiliated with the prestigious research center and observatory at **Mt. Lick** near **San Jose** and **UC Santa Cruz Extension** offers an extensive array of classes and degrees at sites throughout **Silicon Valley**. UC Santa Cruz has a number of innovative outreach program that reach into **Silicon Valley** and beyond, including the **New Teacher Center**, a national model for teacher professional development.



UC's K-12 OUTREACH

UC's Early Academic Outreach Program (EAOP) has provided academic support, career advising, college counseling and motivational/skill-building workshops to help over 85,000 California students realize their dreams of a college education. **In the Bay Area, EAOP works with disadvantaged students in 37 high schools and 37 middle schools in Alameda, Contra Costa, San Francisco and Santa Clara counties**



UC AGRICULTURE AND NATURAL RESOURCES

UC Cooperative Extension in Santa Clara County works with families, local agencies and individuals in the South Bay Area to improve nutrition, reduce child obesity, engage youth in 4-H and after-school activities, assist organic farms and enhance home gardening through the Master Gardener program. **Master Gardeners also trains nursery workers how to spot signs of glassy-winged sharpshooter and sudden oak death.**



The MESA California Community College Program increases the number of math/science majors who successfully transfer and receive 4-year degrees. **MESA Success Through Collaboration (STC)** works with American Indian tribes to meet the same goal with

respect to Native Americans. **STC sites include a joint UC/CSU MESA effort at San Jose State and a site at UC Santa Cruz.** <http://mesa.ucop.edu>

The California Policy Research Center (CPRC) applies UC's research expertise to the analysis, development and implementation of state and federal policy. CPRC provides policy-relevant research on statewide issues, oversees legislatively mandated research, and disseminates findings through publications and special briefings. CPRC hosts such projects as the Welfare Policy Research Project, the California Program on Access to Care, the Latino Policy Institute and the California-Mexico Health Initiative. <http://www.ucop.edu/cprc/>

The Bay Area Social Services Consortium (BASSC) is composed of county Social Service Directors and the graduate social work programs at UC Berkeley, CSU Sacramento, CSU San Jose and CSU San Francisco. BASSC develops educational, applied research and policy development programs in collaboration with county agency administrators and staff. <http://cssr.berkeley.edu/bassc/>



The first of its kind, **the New Teacher Center (NTC) at UCSC**, is a national resource dedicated to teacher development and the support of practices that promote excellence and diversity in America's teaching force. At sites in

Santa Clara and San Jose, **New Teacher Seminars** give teachers the opportunity to problem-solve with colleagues, learn teaching strategies and exchange lesson plans. <http://www.newteachercenter.org>

UC Berkeley's Center for Community Wellness works with Bay Area communities, government agencies and corporations to develop wellness guides on aging, disability, health care and other life issues. The center also runs wellness/self-esteem programs at schools and prisons across the state in order to help empower individuals. <http://www.wellnessguide.org>



California Partners for Advanced Transit in Highways (PATH), at the UC Institute of Transportation Studies brings together faculty and students with private industry and state/local

agencies to develop the research technologies that will improve California's transport systems – including developing solutions for the state's public transit challenges.

The Berkeley Pledge within the **School/University Partnership Program**, matches UC outreach with K-12 schools. Faculty and students help with curriculum, teacher training, mentoring, summer school and in-class support. As a result, students in more than 40 Bay Area schools have dramatically improved their scores on standardized tests in math, reading and writing. <http://students.berkeley.edu/outreach/sup/>



The Puente Project runs programs at 51 community colleges and 35 high schools throughout California – **including 4 high schools in San Jose**, in order to increase the enrollment of educationally

underserved students in four-year universities. To date, Puente has provided mentoring, teaching, and counseling for over 20,000 under-represented students. <http://www.puente.net>

The UC Berkeley Interactive University (IU), serves as a national model in developing innovative internet-based learning for K-12 teachers and students. The UCB program is targeted at under-performing schools in several Bay Area school districts. <http://iu.berkeley.edu/iu/>

For a complete listing of UC programs in your district, access our online database at: www.universityofcalifornia.edu