

UNIVERSITY OF CALIFORNIA ANNUAL ACCOUNTABILITY REPORT

PART III. Universitywide Indicators with Campus Comparisons

Section 15. Educational Extension

Goals

UC Extension programs complement the University's core research and teaching missions, disseminating research, facilitating technology transfer and promoting academic innovation, often in partnership with campus faculty. UC Extension goals are to contribute significantly to fulfilling the University's land-grant mission, presenting a diverse array of public educational programs and activities while remaining completely self-supporting. While the typical UC Extension student is a mid-career, degreed working professional seeking focused, career-related continuing education, the program also aims to provide extensive educational opportunities and access for California's diverse and multi-lingual population.

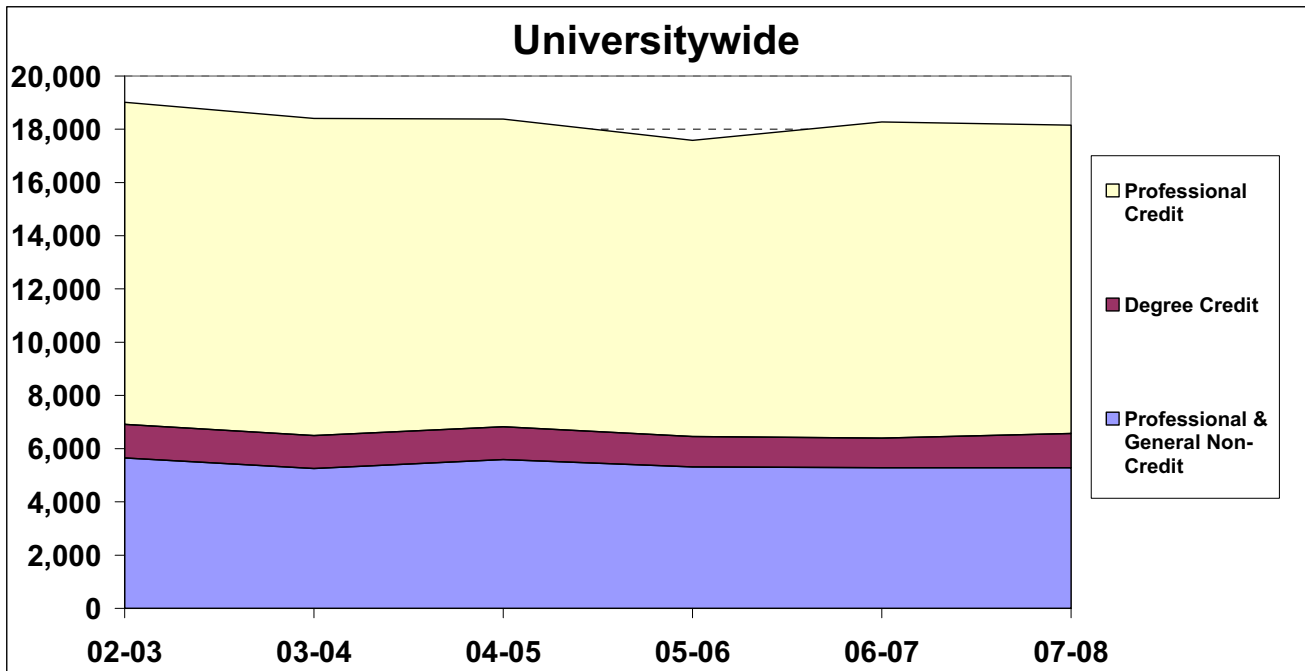
Measures

UC Extension uses qualitative as well as quantitative indicators to measure success. These include student reports of the impact of Extension educational programs on their professional and personal lives, regional impacts of university-community partnerships created by Extension professionals addressing community issues and value returned to teaching and research programs of other campus academic units through UC Extension programs and partnerships. Each campus Extension program addresses the needs for continuing and professional education in its own geographic region. The need varies in a way that is reflected in the data.

Note: The data reported in this section do not include either program or registration data on Continuing Medical Education (CME) programs, which are entirely separate from the campus Extension programs.

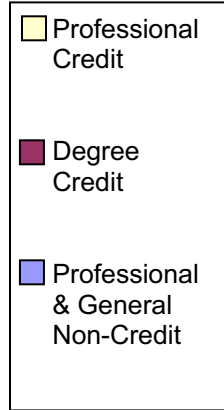
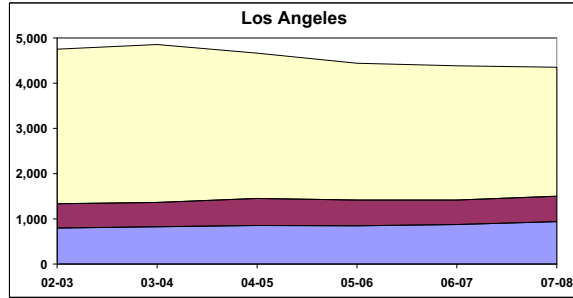
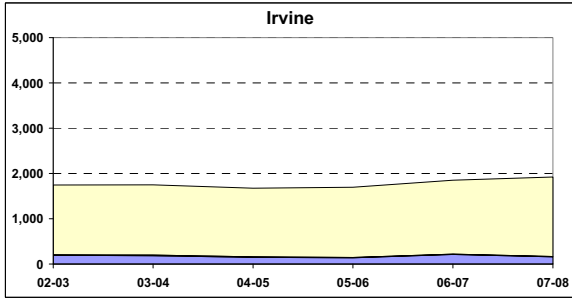
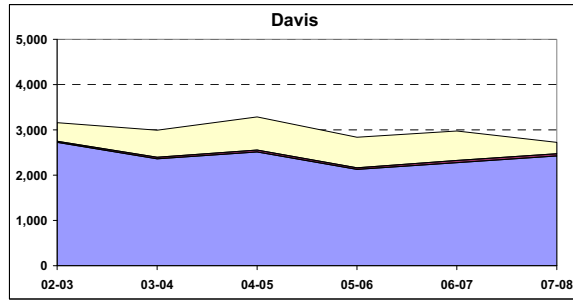
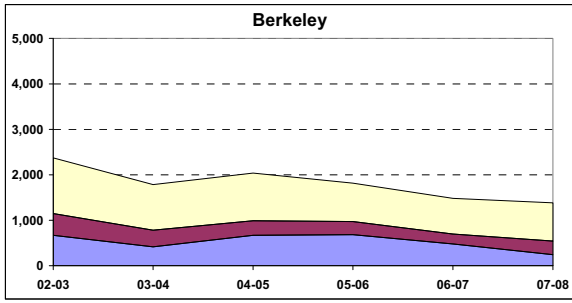
Indicator 15.1

Number of Continuing Education Programs, 2002-03 to 2007-08

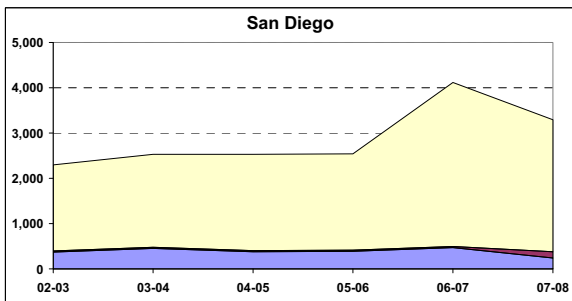
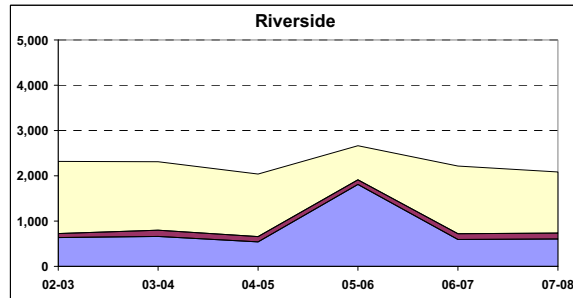


- **Professional Credit:** Programs that provide Senate-approved academic credit, most often in the X400 and X300 professional course series.
- **Degree Credit:** Programs leading to formal UC degree credit, developed and presented in partnership with campus faculty and graduate degree programs.
- **Professional & General Non-Credit:** High-quality, specifically targeted continuing education courses and workshops. These programs may satisfy continuing education requirements of public agencies and professional associations but do not convey UC Senate-approved academic credit.

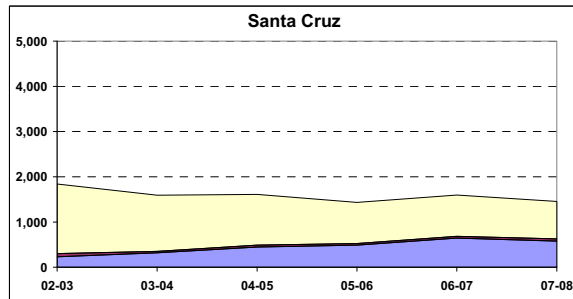
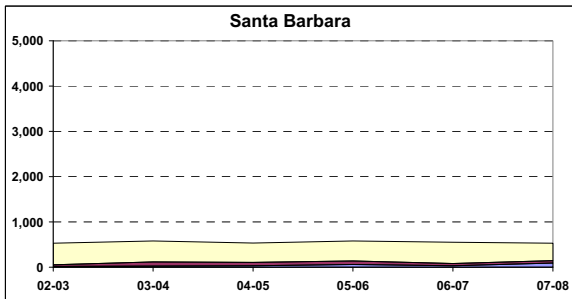
15.1 (continued) Number of Continuing Education Programs, 2002-03 to 2007-08



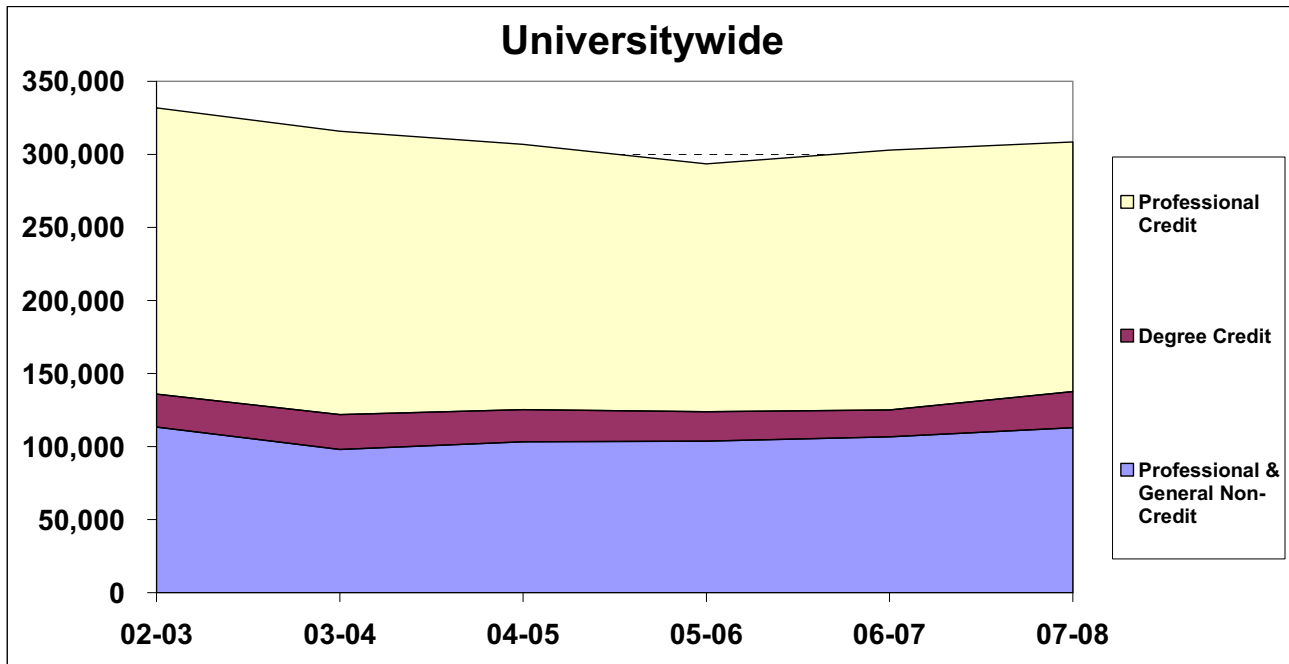
(Merced has not established an Extension program yet.)



(San Francisco does not have an Extension program.)

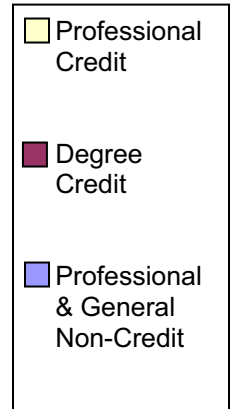
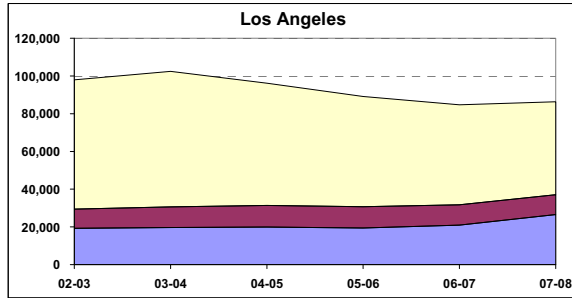
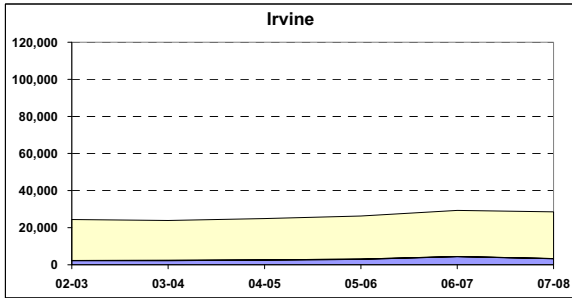
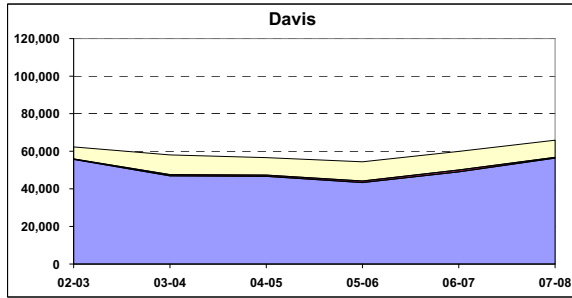
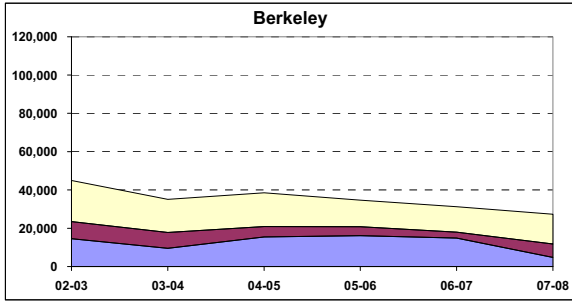


Indicator 15.2
Continuing Education Registrations, 2002-03 to 2007-08

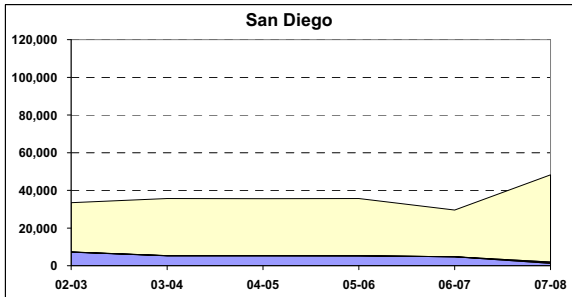
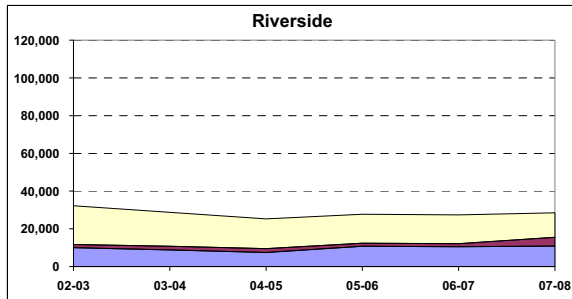


- A substantial “economic multiplier” is associated with regional economic impacts from Extension programs and activities at every campus. A recent study of UCLA Extension programs, for example, estimated an annual contribution of \$250 million to the regional economy, 70 percent of which is attributable to students’ increased earning power after completing an Extension program.

15.2 (continued) Continuing Education Registrations, 2002-03 to 2007-08



(Merced has not established an Extension program yet.)



(San Francisco does not have an Extension program.)

