

Business Resource Center (BRC)

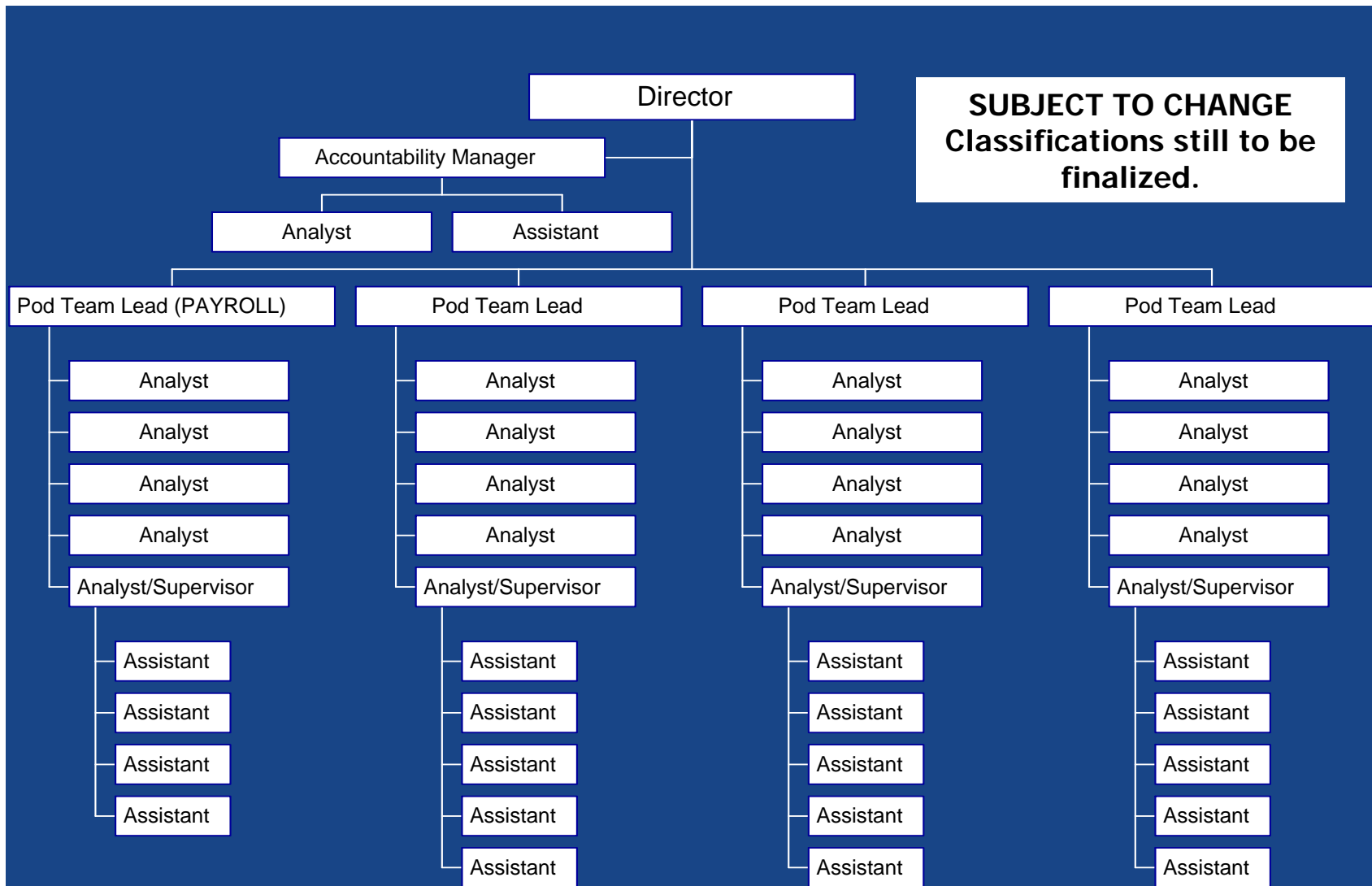
It's anticipated that units will be phased in over time. The goal is to establish a unit that will:

- Centralize transaction processing for administrative functions, allowing departments to focus on their core responsibilities in support of the President and the Campuses
- Standardize, to the greatest extent possible, procedures and controls to ensure maximum service to departments as well as efficient, controlled processing
- Ensure compliance with University policies, procedures and delegations of authority

Business Resource Center activities:

- General Purchasing – including transactions that are processed through accounts payable (Bruinbuy) and individual reimbursements processed through UCLA express
- Data Management – including general ledger reconciliation, on-line financial reporting and cashiering.
- Payroll – all payroll functions in a single centralized payroll cluster

Business Resource Center (BRC)



SUBJECT TO CHANGE
Classifications still to be finalized.