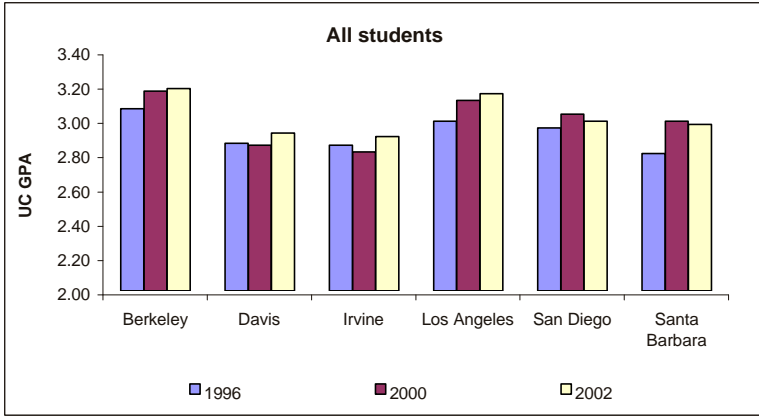
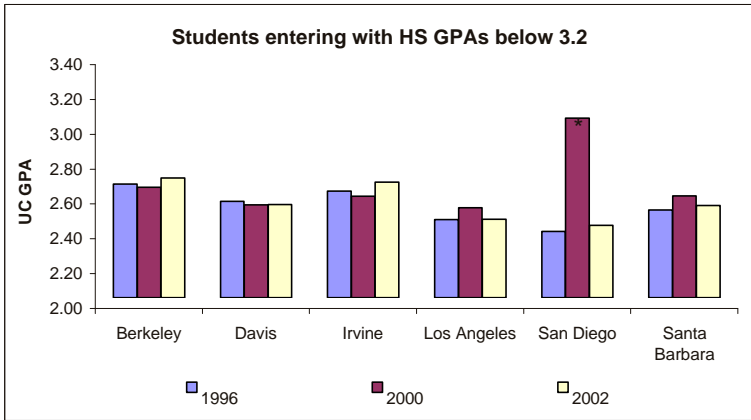


First-Year Outcomes of Students Enrolled as Freshmen in 1996, 2000 and 2002

First year Grade Point Average (GPA)



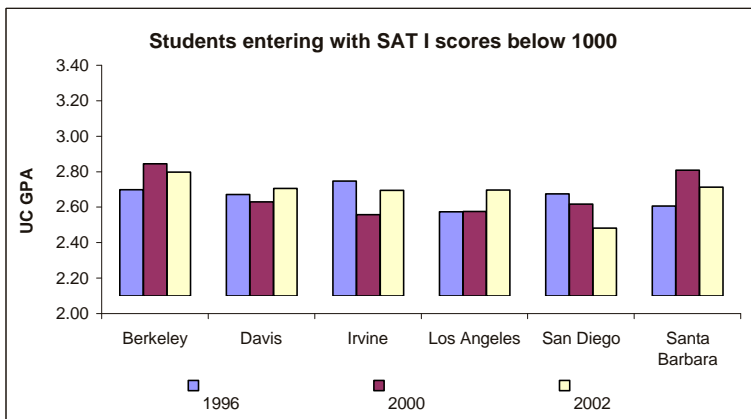
	Number of students (all students)					
	UCB	UCD	UCI	UCLA	UCSD	UCSB
1996	3,708	3,687	2,945	3,820	2,680	3,466
2000	3,736	4,313	3,471	4,203	3,083	3,427
2002	3,653	4,675	3,796	4,257	4,206	3,842



	Number of students (HS GPA below 3.2)					
	UCB	UCD	UCI	UCLA	UCSD	UCSB
1996	198	287	217	132	24	619
2000	57	351	162	109	2	177
2002	66	384	90	111	10	242

Note: characteristics of small populations should be considered with caution

* In 2000, UCSD had only 2 students entering with HS GPAs below 3.2.

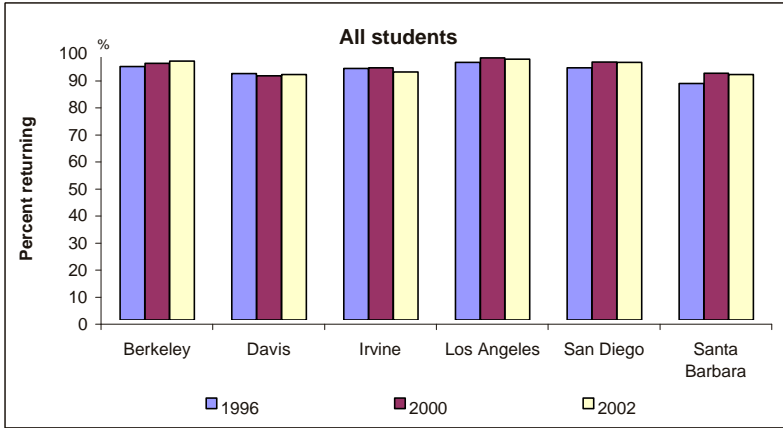


	Number of students (SAT I below 1000)					
	UCB	UCD	UCI	UCLA	UCSD	UCSB
1996	210	477	573	278	162	654
2000	197	562	314	228	106	377
2002	213	678	301	312	240	493

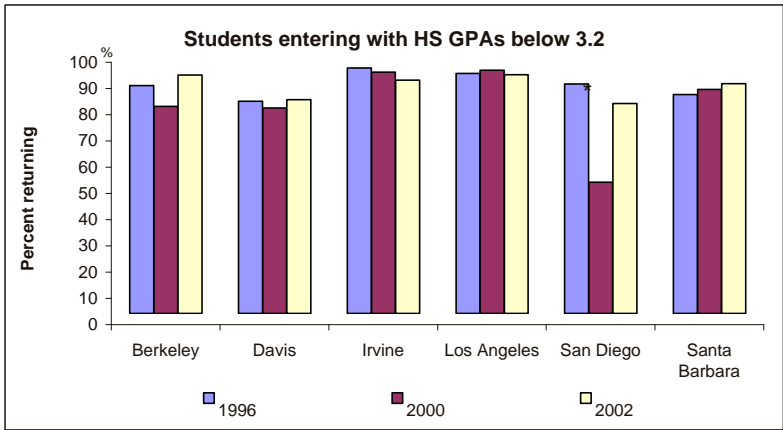
Note: characteristics of small populations should be considered with caution

First-Year Outcomes of Students Enrolled as Freshmen in 1996, 2000 and 2002

One-year Persistence Rate



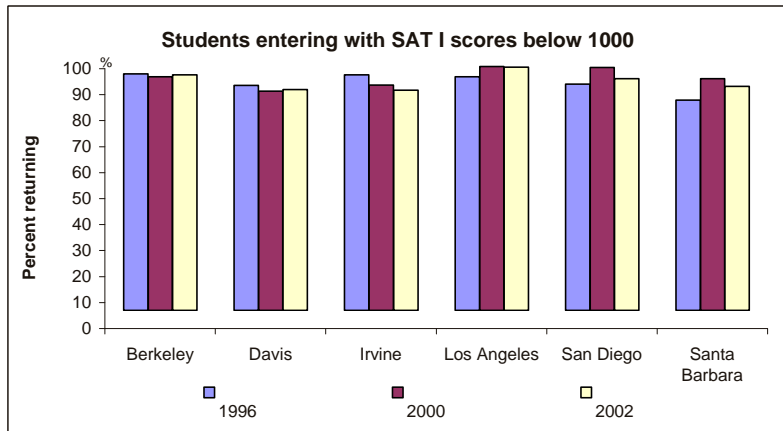
	Number of students (all students)					
	UCB	UCD	UCI	UCLA	UCSD	UCSB
1996	3,708	3,687	2,945	3,820	2,680	3,466
2000	3,736	4,313	3,471	4,203	3,083	3,427
2002	3,653	4,675	3,796	4,257	4,206	3,842



	Number of students (HS GPA below 3.2)					
	UCB	UCD	UCI	UCLA	UCSD	UCSB
1996	198	287	217	132	24	619
2000	57	351	162	109	2	177
2002	66	384	90	111	10	242

Note: characteristics of small populations should be considered with caution

* In 2000, UCSD had only 2 students entering with HS GPAs below 3.2.

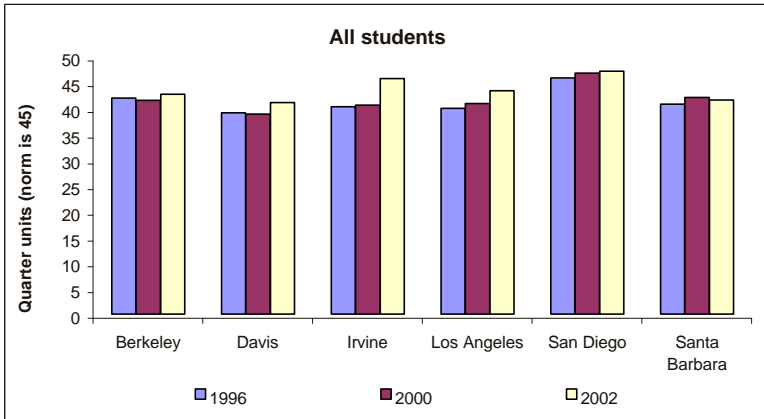


	Number of students (SAT I below 1000)					
	UCB	UCD	UCI	UCLA	UCSD	UCSB
1996	210	477	573	278	162	654
2000	197	562	314	228	106	377
2002	213	678	301	312	240	493

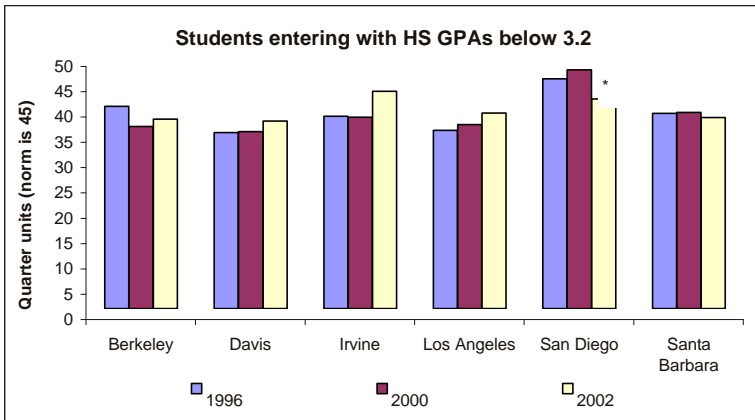
Note: characteristics of small populations should be considered with caution

First-Year Outcomes of Students Enrolled as Freshmen in 1996, 2000 and 2002

Average Number of UC Units Completed in the First Year



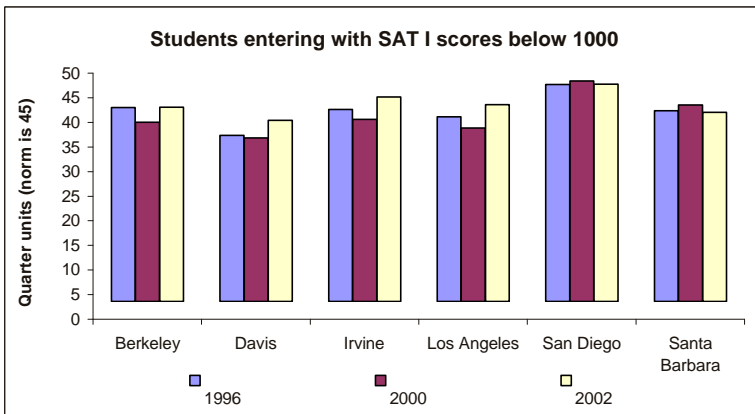
	Number of students (all students)					
	UCB	UCD	UCI	UCLA	UCSD	UCSB
1996	3,708	3,687	2,945	3,820	2,680	3,466
2000	3,736	4,313	3,471	4,203	3,083	3,427
2002	3,653	4,675	3,796	4,257	4,206	3,842



	Number of students (HS GPA below 3.2)					
	UCB	UCD	UCI	UCLA	UCSD	UCSB
1996	198	287	217	132	24	619
2000	57	351	162	109	2	177
2002	66	384	90	111	10	242

Note: characteristics of small populations should be considered with caution

* In 2000, UCSD had only 2 students entering with HS GPAs below 3.2.



	Number of students (SAT I below 1000)					
	UCB	UCD	UCI	UCLA	UCSD	UCSB
1996	210	477	573	278	162	654
2000	197	562	314	228	106	377
2002	213	678	301	312	240	493

Note: characteristics of small populations should be considered with caution

FIRST-YEAR OUTCOMES OF STUDENTS ENROLLED AS FRESHMEN IN 1996, 2000 and 2002

UC GPA, PERSISTENCE RATE AND AVERAGE UNITS COMPLETED

Berkeley

HSGPA Bands*	1996				2000				2002			
	Number of Enrolled Students	Average First-Year UC GPA	One-Year Persistence Rate (%)	Average Units Completed (for Persisting Students)	Number of Enrolled Students	Average First-Year UC GPA	One-Year Persistence Rate (%)	Average Units Completed (for Persisting Students)	Number of Enrolled Students	Average First-Year UC GPA	One-Year Persistence Rate (%)	Average Units Completed (for Persisting Students)**
Below 2.80	37	2.78	86.5	41.0	12	2.44	75.0	28.3	13	2.79	84.6	37.6
2.80 - 2.99	47	2.71	89.4	40.3	11	2.58	81.8	32.7	19	2.60	84.2	37.2
3.00 - 3.19	114	2.58	86.0	39.5	34	2.72	79.4	39.8	34	2.69	97.1	37.5
3.20 - 3.39	160	2.73	86.3	39.0	71	2.80	88.7	37.7	58	2.68	93.1	38.3
3.40 - 3.59	277	2.75	92.4	39.7	119	2.82	89.9	37.6	103	2.78	90.3	41.0
3.60 - 3.79	453	2.84	90.5	40.3	296	2.88	91.2	39.7	194	2.85	94.8	40.6
3.80 - 3.99	622	2.97	93.6	41.4	493	3.03	93.9	40.8	366	2.93	94.5	41.2
4.00 - 4.19	972	3.16	96.0	42.7	1077	3.14	96.3	41.4	1237	3.18	95.4	43.2
4.20 and Above	959	3.38	96.4	43.9	1497	3.35	96.9	42.8	1503	3.35	97.3	43.5
OVERALL***	3708	3.06	93.8	42.0	3736	3.16	95.0	41.5	3653	3.18	95.7	42.7

*High school GPA includes an extra grade point for all UC-approved honors courses where a grade of C or higher was earned.

SAT I Score Bands	1996				2000				2002			
	Number of Enrolled Students	Average First-Year UC GPA	One-Year Persistence Rate (%)	Average Units Completed (for Persisting Students)**	Number of Enrolled Students	Average First-Year UC GPA	One-Year Persistence Rate (%)	Average Units Completed (for Persisting Students)	Number of Enrolled Students	Average First-Year UC GPA	One-Year Persistence Rate (%)	Average Units Completed (for Persisting Students)**
400 - 500	0				0				0			
501 - 600	0				0				0			
601 - 700	2	2.96	100.0	37.5	4	2.70	100.0	32.1	1	2.99	100.0	48.0
701 - 800	9	2.52	88.9	35.7	10	2.69	90.0	31.0	14	2.55	100.0	39.6
801 - 900	49	2.53	91.8	38.5	42	2.70	90.5	35.1	48	2.65	85.4	39.1
901 - 1000	150	2.62	90.7	39.9	141	2.77	89.4	37.3	150	2.72	91.3	39.5
1001 - 1100	278	2.72	91.4	39.3	239	2.86	93.3	39.1	253	2.81	93.7	40.8
1101 - 1200	454	2.91	93.6	40.6	424	2.95	92.7	39.8	440	2.96	94.5	41.1
1201 - 1300	724	3.00	93.0	41.3	697	3.15	95.0	41.3	693	3.10	95.4	42.2
1301 - 1400	989	3.17	94.3	42.8	933	3.21	96.5	42.1	868	3.27	96.8	43.1
1401 - 1500	803	3.23	95.6	43.3	892	3.31	95.9	42.8	856	3.39	97.1	44.0
1501 - 1600	246	3.30	93.1	44.0	347	3.40	96.0	43.8	326	3.46	96.6	44.9
OVERALL***	3708	3.06	93.8	42.0	3736	3.16	95.0	41.5	3653	3.18	95.7	42.7

**Semester units converted to quarter units (at 1.5 times semester units).

Students taking a full load and completing all of their courses with a passing grade will accumulate 45 quarter units by the end of the first year.

***Includes students with missing data

FIRST-YEAR OUTCOMES OF STUDENTS ENROLLED AS FRESHMEN IN 1996, 2000 and 2002

UC GPA, PERSISTENCE RATE AND AVERAGE UNITS COMPLETED

Davis

HSGPA Bands*	1996				2000				2002			
	Number of Enrolled Students	Average First-Year UC GPA	One-Year Persistence Rate (%)	Average Units Completed (for Persisting Students)**	Number of Enrolled Students	Average First-Year UC GPA	One-Year Persistence Rate (%)	Average Units Completed (for Persisting Students)**	Number of Enrolled Students	Average First-Year UC GPA	One-Year Persistence Rate (%)	Average Units Completed (for Persisting Students)**
Below 2.80	9	2.54	77.8	31.0	6	2.65	83.3	33.1	10	2.39	80.0	35.2
2.80 - 2.99	63	2.59	79.4	33.8	75	2.51	73.3	34.1	110	2.51	82.7	36.6
3.00 - 3.19	215	2.54	81.4	35.2	270	2.54	79.6	35.2	264	2.55	81.1	37.3
3.20 - 3.39	410	2.64	86.8	37.1	448	2.64	85.7	36.3	462	2.68	85.5	39.1
3.40 - 3.59	676	2.73	91.4	38.3	733	2.70	90.3	38.0	759	2.79	90.5	40.6
3.60 - 3.79	705	2.78	90.4	38.7	879	2.80	91.9	38.5	965	2.88	92.7	41.1
3.80 - 3.99	630	2.90	95.4	39.6	829	2.90	91.7	39.6	945	2.98	93.1	41.8
4.00 - 4.19	619	3.08	94.3	40.6	711	3.06	94.4	40.6	848	3.15	91.6	42.5
4.20 and Above	360	3.29	92.5	43.1	362	3.30	91.7	42.8	312	3.39	94.9	43.2
OVERALL	3687	2.86	91.2	39.1	4313	2.85	90.2	38.9	4675	2.92	90.8	41.1

*High school GPA includes an extra grade point for all UC-approved honors courses where a grade of C or higher was earned.

SAT I Score Bands	1996				2000				2002			
	Number of Enrolled Students	Average First-Year UC GPA	One-Year Persistence Rate (%)	Average Units Completed (for Persisting Students)**	Number of Enrolled Students	Average First-Year UC GPA	One-Year Persistence Rate (%)	Average Units Completed (for Persisting Students)**	Number of Enrolled Students	Average First-Year UC GPA	One-Year Persistence Rate (%)	Average Units Completed (for Persisting Students)**
400 - 500	0				0				0			
501 - 600	0				0				2	3.21	100.0	25.0
601 - 700	4	2.79	100.0	36.9	10	1.96	40.0	30.9	7	2.24	100.0	28.8
701 - 800	23	2.28	73.9	28.6	47	2.42	74.5	29.1	48	2.61	85.4	30.7
801 - 900	118	2.46	85.6	31.7	168	2.51	86.9	31.6	203	2.50	82.8	35.8
901 - 1000	332	2.63	87.7	34.8	337	2.57	85.8	34.6	418	2.66	85.6	38.2
1001 - 1100	673	2.75	90.0	38.0	774	2.70	89.8	37.3	710	2.78	90.8	39.7
1101 - 1200	1016	2.83	92.2	39.4	1061	2.81	91.0	38.8	1172	2.92	93.3	41.4
1201 - 1300	925	2.97	93.4	40.5	1131	2.97	92.9	40.7	1228	3.02	92.4	42.4
1301 - 1400	432	3.11	94.0	41.6	566	3.08	92.4	41.6	623	3.12	92.0	43.1
1401 - 1500	90	3.35	92.2	45.8	158	3.18	86.7	43.3	184	3.21	88.6	44.6
1501 - 1600	15	3.45	73.3	43.0	27	3.43	92.6	44.6	28	3.33	82.1	42.8
OVERALL	3628	2.87	91.5	39.2	4279	2.85	90.5	38.9	4623	2.92	91.0	41.1

**Students taking a full load and completing all of their courses with a passing grade will accumulate 45 quarter units by the end of the first year.

FIRST-YEAR OUTCOMES OF STUDENTS ENROLLED AS FRESHMEN IN 1996, 2000 and 2002

UC GPA, PERSISTENCE RATE AND AVERAGE UNITS COMPLETED

Irvine

HSGPA Bands*	1996				2000				2002			
	Number of Enrolled Students	Average First-Year UC GPA	One-Year Persistence Rate (%)	Average Units Completed (for Persisting Students)**	Number of Enrolled Students	Average First-Year UC GPA	One-Year Persistence Rate (%)	Average Units Completed (for Persisting Students)**	Number of Enrolled Students	Average First-Year UC GPA	One-Year Persistence Rate (%)	Average Units Completed (for Persisting Students)**
Below 2.80	7	2.14	85.7	32.9	7	2.46	85.7	33.2	10	2.30	100.0	40.7
2.80 - 2.99	34	2.56	97.1	37.1	23	2.58	91.3	36.2	21	2.79	85.7	45.0
3.00 - 3.19	176	2.64	93.2	38.4	132	2.59	92.4	38.3	59	2.68	88.1	42.6
3.20 - 3.39	430	2.67	90.5	38.6	252	2.64	92.1	38.9	455	2.68	91.0	43.8
3.40 - 3.59	599	2.75	92.8	39.8	821	2.71	93.5	39.8	966	2.78	91.5	44.8
3.60 - 3.79	637	2.77	91.8	40.0	874	2.78	92.5	40.4	942	2.88	91.4	45.6
3.80 - 3.99	439	2.94	94.1	40.7	564	2.88	93.6	41.6	629	2.96	93.3	45.7
4.00 - 4.19	345	3.06	93.3	42.3	396	3.04	95.7	41.7	462	3.14	91.8	47.2
4.20 and Above	274	3.31	97.5	43.4	186	3.28	94.6	44.6	247	3.38	91.5	52.1
OVERALL***	2945	2.85	93.0	40.3	3471	2.81	93.2	40.6	3796	2.90	91.7	45.8

*High school GPA includes an extra grade point for all UC-approved honors courses where a grade of C or higher was earned.

SAT I Score Bands	1996				2000				2002			
	Number of Enrolled Students	Average First-Year UC GPA	One-Year Persistence Rate (%)	Average Units Completed (for Persisting Students)**	Number of Enrolled Students	Average First-Year UC GPA	One-Year Persistence Rate (%)	Average Units Completed (for Persisting Students)**	Number of Enrolled Students	Average First-Year UC GPA	One-Year Persistence Rate (%)	Average Units Completed (for Persisting Students)**
400 - 500	0				0				0			
501 - 600	0				0				0			
601 - 700	2	2.20	50.0	40.0	0				2	2.79	100.0	61.0
701 - 800	28	2.86	89.3	38.9	3	2.67	100.0	40.7	21	2.38	62.0	36.8
801 - 900	142	2.52	90.9	37.8	58	2.35	82.8	36.2	59	2.54	83.1	39.4
901 - 1000	401	2.68	90.8	39.4	253	2.48	87.4	37.1	219	2.63	87.2	42.4
1001 - 1100	750	2.80	92.5	40.2	688	2.71	92.7	39.9	716	2.79	92.2	44.6
1101 - 1200	818	2.86	92.9	40.3	1070	2.85	93.2	41.0	1150	2.85	91.7	45.6
1201 - 1300	494	2.94	95.6	40.0	857	2.85	94.6	40.8	977	2.96	93.5	46.3
1301 - 1400	227	3.12	95.6	42.6	384	2.97	94.5	42.1	452	3.12	94.0	47.3
1401 - 1500	66	3.40	93.9	46.2	127	3.09	98.4	42.6	169	3.22	88.8	51.1
1501 - 1600	6	3.70	100.0	46.3	10	3.48	90.0	45.2	30	3.24	73.3	53.3
OVERALL***	2945	2.85	93.0	40.3	3471	2.81	93.2	40.6	3796	2.90	91.7	45.8

**Students taking a full load and completing all of their courses with a passing grade will accumulate 45 quarter units by the end of the first year.

2002 data are preliminary

FIRST-YEAR OUTCOMES OF STUDENTS ENROLLED AS FRESHMEN IN 1996, 2000 and 2002

UC GPA, PERSISTENCE RATE AND AVERAGE UNITS COMPLETED

Los Angeles

HSGPA Bands*	1996				2000				2002			
	Number of Enrolled Students	Average First-Year UC GPA	One-Year Persistence Rate (%)	Average Units Completed (for Persisting Students)**	Number of Enrolled Students	Average First-Year UC GPA	One-Year Persistence Rate (%)	Average Units Completed (for Persisting Students)**	Number of Enrolled Students	Average First-Year UC GPA	One-Year Persistence Rate (%)	Average Units Completed (for Persisting Students)**
Below 2.80	15	2.24	100.0	32.8	32	2.12	93.8	32.2	40	2.14	90.0	36.8
2.80 - 2.99	18	2.39	81.0	34.6	34	2.58	91.2	38.6	22	2.50	90.9	40.8
3.00 - 3.19	99	2.49	92.1	35.7	43	2.76	93.0	37.6	49	2.68	91.8	39.1
3.20 - 3.39	207	2.65	92.0	38.5	108	2.73	96.3	37.8	69	2.79	95.7	41.8
3.40 - 3.59	326	2.60	94.5	38.1	215	2.82	94.4	37.8	219	2.81	95.9	40.9
3.60 - 3.79	551	2.82	96.8	39.2	447	2.84	95.3	39.3	478	2.91	95.0	41.8
3.80 - 3.99	748	2.92	96.6	39.6	839	3.01	96.9	40.5	854	3.02	95.8	43.1
4.00 - 4.19	991	3.13	96.4	40.9	1334	3.17	97.5	41.5	1378	3.22	96.7	44.0
4.20 and Above	824	3.35	97.8	41.5	1145	3.35	97.9	42.2	1147	3.41	97.8	44.7
OVERALL***	3820	2.99	95.3	40.0	4203	3.11	96.9	40.9	4257	3.15	96.4	43.4

*High school GPA includes an extra grade point for all UC-approved honors courses where a grade of C or higher was earned.

SAT I Score Bands	1996				2000				2002			
	Number of Enrolled Students	Average First-Year UC GPA	One-Year Persistence Rate (%)	Average Units Completed (for Persisting Students)**	Number of Enrolled Students	Average First-Year UC GPA	One-Year Persistence Rate (%)	Average Units Completed (for Persisting Students)	Number of Enrolled Students	Average First-Year UC GPA	One-Year Persistence Rate (%)	Average Units Completed (for Persisting Students)
400 - 500	0				0				0			
501 - 600	0				0				0			
601 - 700	0				0				0			
701 - 800	4	2.55	100.0	39.5	3	1.19	66.7	18.0	3	2.22	66.7	36.5
801 - 900	58	2.37	81.0	36.6	44	2.34	95.5	34.1	65	2.49	95.4	38.7
901 - 1000	216	2.50	92.1	37.7	181	2.53	93.9	35.8	244	2.63	93.4	40.4
1001 - 1100	450	2.65	92.0	38.1	313	2.81	95.2	38.6	453	2.83	94.9	41.1
1101 - 1200	599	2.86	94.5	39.5	581	2.92	95.7	39.3	578	2.95	95.0	42.1
1201 - 1300	1,141	3.07	96.8	40.3	1,012	3.13	97.7	41.2	844	3.18	96.6	43.7
1301 - 1400	966	3.16	96.6	40.7	1,220	3.23	97.2	41.8	1,159	3.32	97.2	44.3
1401 - 1500	338	3.34	96.4	41.5	720	3.27	97.9	42.3	778	3.37	97.8	45.0
1501 - 1600	45	3.38	97.8	42.3	125	3.41	97.6	43.4	133	3.46	97.7	46.3
OVERALL***	3820	2.99	95.3	40.0	4203	3.11	96.9	40.9	4257	3.15	96.4	43.4

**Students taking a full load and completing all of their courses with a passing grade will accumulate 45 quarter units by the end of the first year.

***Includes students with missing data

FIRST-YEAR OUTCOMES OF STUDENTS ENROLLED AS FRESHMEN IN 1996, 2000 and 2002

UC GPA, PERSISTENCE RATE AND AVERAGE UNITS COMPLETED

San Diego

HSGPA Bands*	1996				2000				2002			
	Number of Enrolled Students	Average First-Year UC GPA	One-Year Persistence Rate (%)	Average Units Completed (for Persisting Students)**	Number of Enrolled Students	Average First-Year UC GPA	One-Year Persistence Rate (%)	Average Units Completed (for Persisting Students)**	Number of Enrolled Students	Average First-Year UC GPA	One-Year Persistence Rate (%)	Average Units Completed (for Persisting Students)**
Below 2.80*					1	4.00	0.0	50.3	1	3.00	0.0	0.0
2.80 - 2.99					1	2.06	100.0	44.0	9	2.35	88.9	46.0
3.00 - 3.19	24	2.38	87.5	45.4	31	2.58	90.3	43.0	88	2.39	88.6	45.1
3.20 - 3.39	104	2.62	94.2	44.5	166	2.77	93.4	45.8	337	2.69	95.0	45.9
3.40 - 3.59	266	2.76	90.2	44.6	475	2.86	93.9	46.0	743	2.83	94.1	46.9
3.60 - 3.79	539	2.82	92.8	45.4	737	2.94	95.4	46.2	1019	2.94	96.3	47.0
3.80 - 3.99	589	2.93	93.4	46.1	983	3.06	95.9	46.9	1269	3.08	95.5	47.5
4.00 - 4.19	691	3.04	93.3	46.0	676	3.29	96.4	48.1	722	3.30	96.3	47.8
4.20 and Above	414	3.24	95.4	46.9								
OVERALL	2680	2.95	93.3	45.9	3083	3.03	95.4	46.8	4206	2.99	95.3	47.2

*High school GPA includes an extra grade point for all UC-approved honors courses where a grade of C or higher was earned.

SAT I Score Bands	1996				2000				2002			
	Number of Enrolled Students	Average First-Year UC GPA	One-Year Persistence Rate (%)	Average Units Completed (for Persisting Students)**	Number of Enrolled Students	Average First-Year UC GPA	One-Year Persistence Rate (%)	Average Units Completed (for Persisting Students)**	Number of Enrolled Students	Average First-Year UC GPA	One-Year Persistence Rate (%)	Average Units Completed (for Persisting Students)**
400 - 500					1	3.01	100.0	40.0				
501 - 600									4	1.77	50.0	37.5
601 - 700	2	2.39	100.0	42.5	17	1.88	100.0	36.0	53	2.35	84.9	43.3
701 - 800	9	2.32	77.8	47.0	22	2.49	95.5	42.5	166	2.45	92.2	44.8
801 - 900	29	2.65	93.1	41.6	82	2.53	92.7	45.6	357	2.69	95.0	45.9
901 - 1000	122	2.58	86.1	44.5	210	2.75	93.3	45.7	823	2.93	95.3	46.8
1001 - 1100	282	2.79	92.6	45.2	531	2.93	96.6	46.4	1295	3.05	95.7	47.3
1101 - 1200	674	2.90	93.9	45.9	966	3.05	95.5	46.8	996	3.11	96.6	47.7
1201 - 1300	796	2.96	94.2	45.7	817	3.11	96.3	46.9	415	3.22	94.9	48.2
1301 - 1400	537	3.09	95.2	46.5	367	3.19	93.7	47.3	77	3.40	96.1	49.3
1401 - 1500	166	3.18	91.6	47.5	86	3.30	90.7	50.0				
1501 - 1600	26	3.46	84.6	47.5								
OVERALL	2680	2.95	93.3	45.9	3083	3.03	95.4	46.8	4206	2.99	95.3	47.2

**Students taking a full load and completing all of their courses with a passing grade will accumulate 45 quarter units by the end of the first year.

Note: units per student in 2000 and 2002 are being reviewed for accuracy

FIRST-YEAR OUTCOMES OF STUDENTS ENROLLED AS FRESHMEN IN 1996, 2000 and 2002

UC GPA, PERSISTENCE RATE AND AVERAGE UNITS COMPLETED

Santa Barbara

HSGPA Bands*	1996				2000				2002			
	Number of Enrolled Students	Average First-Year UC GPA	One-Year Persistence Rate (%)	Average Units Completed (for Persisting Students)**	Number of Enrolled Students	Average First-Year UC GPA	One-Year Persistence Rate (%)	Average Units Completed (for Persisting Students)**	Number of Enrolled Students	Average First-Year UC GPA	One-Year Persistence Rate (%)	Average Units Completed (for Persisting Students)**
Below 2.80	34	2.33	82.4	37.9	17	2.32	70.6	37.0	19	2.47	94.7	36.2
2.80 - 2.99	70	2.40	85.7	36.2	12	2.14	83.3	36.6	42	2.51	85.7	37.0
3.00 - 3.19	515	2.53	83.1	38.9	148	2.65	87.2	39.1	181	2.54	87.3	38.1
3.20 - 3.39	729	2.65	85.6	40.0	385	2.69	89.6	40.1	412	2.67	88.4	39.9
3.40 - 3.59	740	2.76	87.4	40.6	574	2.82	91.8	41.6	721	2.81	90.7	40.4
3.60 - 3.79	570	2.88	89.0	41.7	767	2.96	91.7	41.9	808	2.92	91.6	42.0
3.80 - 3.99	352	2.99	90.1	42.1	690	3.05	91.3	42.5	757	3.05	91.3	42.2
4.00 - 4.19	292	3.16	92.8	42.7	557	3.24	92.5	43.7	592	3.23	92.1	42.9
4.20 and Above	156	3.49	91.0	44.3	233	3.44	92.7	43.8	287	3.49	91.6	44.3
OVERALL***	3466	2.80	87.4	40.8	3427	2.99	91.2	42.1	3842	2.97	90.8	41.6

*High school GPA includes an extra grade point for all UC-approved honors courses where a grade of C or higher was earned.

SAT I Score Bands	1996				2000				2002			
	Number of Enrolled Students	Average First-Year UC GPA	One-Year Persistence Rate (%)	Average Units Completed (for Persisting Students)**	Number of Enrolled Students	Average First-Year UC GPA	One-Year Persistence Rate (%)	Average Units Completed (for Persisting Students)**	Number of Enrolled Students	Average First-Year UC GPA	One-Year Persistence Rate (%)	Average Units Completed (for Persisting Students)**
400 - 500												
501 - 600												
601 - 700	6	2.33	66.7	33.6					1	2.25	100.0	33.0
701 - 800	33	2.38	72.7	36.2	12	2.60	66.7	35.6	21	2.61	81.0	37.6
801 - 900	173	2.43	84.4	37.9	88	2.72	88.6	39.4	114	2.50	85.1	36.7
901 - 1000	442	2.55	80.3	39.3	277	2.71	90.3	40.3	357	2.65	86.8	39.0
1001 - 1100	863	2.69	86.4	40.3	482	2.78	92.7	40.6	707	2.78	89.7	40.6
1101 - 1200	986	2.86	90.5	41.1	897	2.96	91.9	42.3	1025	2.96	92.7	42.0
1201 - 1300	651	2.95	90.5	41.9	1001	3.09	90.0	42.8	964	3.11	91.9	42.7
1301 - 1400	228	3.16	88.2	42.8	501	3.18	92.8	42.8	471	3.21	91.7	42.6
1401 - 1500	71	3.29	90.1	43.3	143	3.15	90.2	42.8	167	3.28	88.6	42.9
1501 - 1600	12	3.76	66.7	48.2	25	3.02	84.0	44.2	11	3.42	90.9	44.9
OVERALL***	3466	2.80	87.4	40.8	3427	2.99	91.2	42.1	3842	2.97	90.8	41.6

3838 2.965841584

**Students taking a full load and completing all of their courses with a passing grade will accumulate 45 quarter units by the end of the first year.

***Includes students with missing data