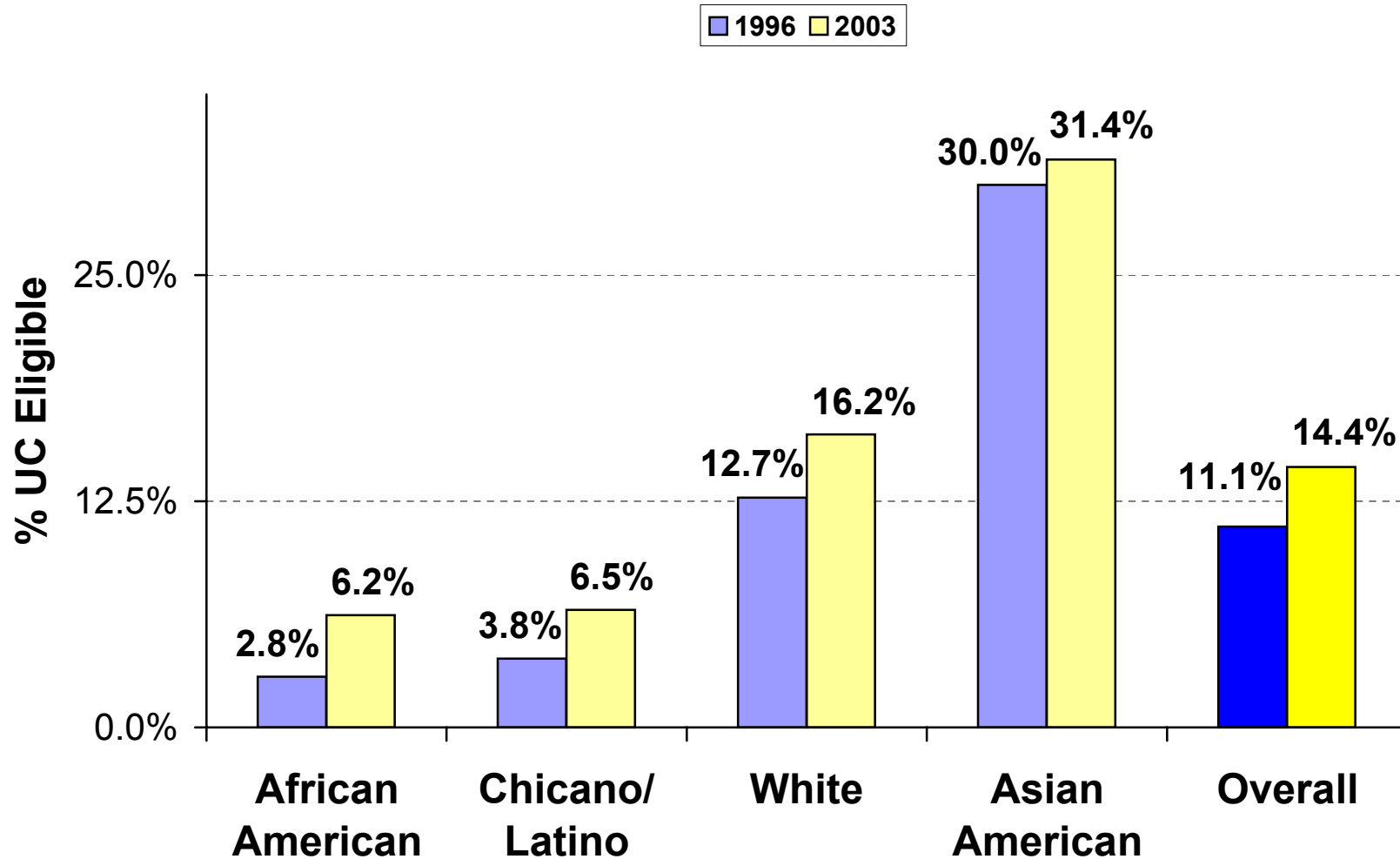
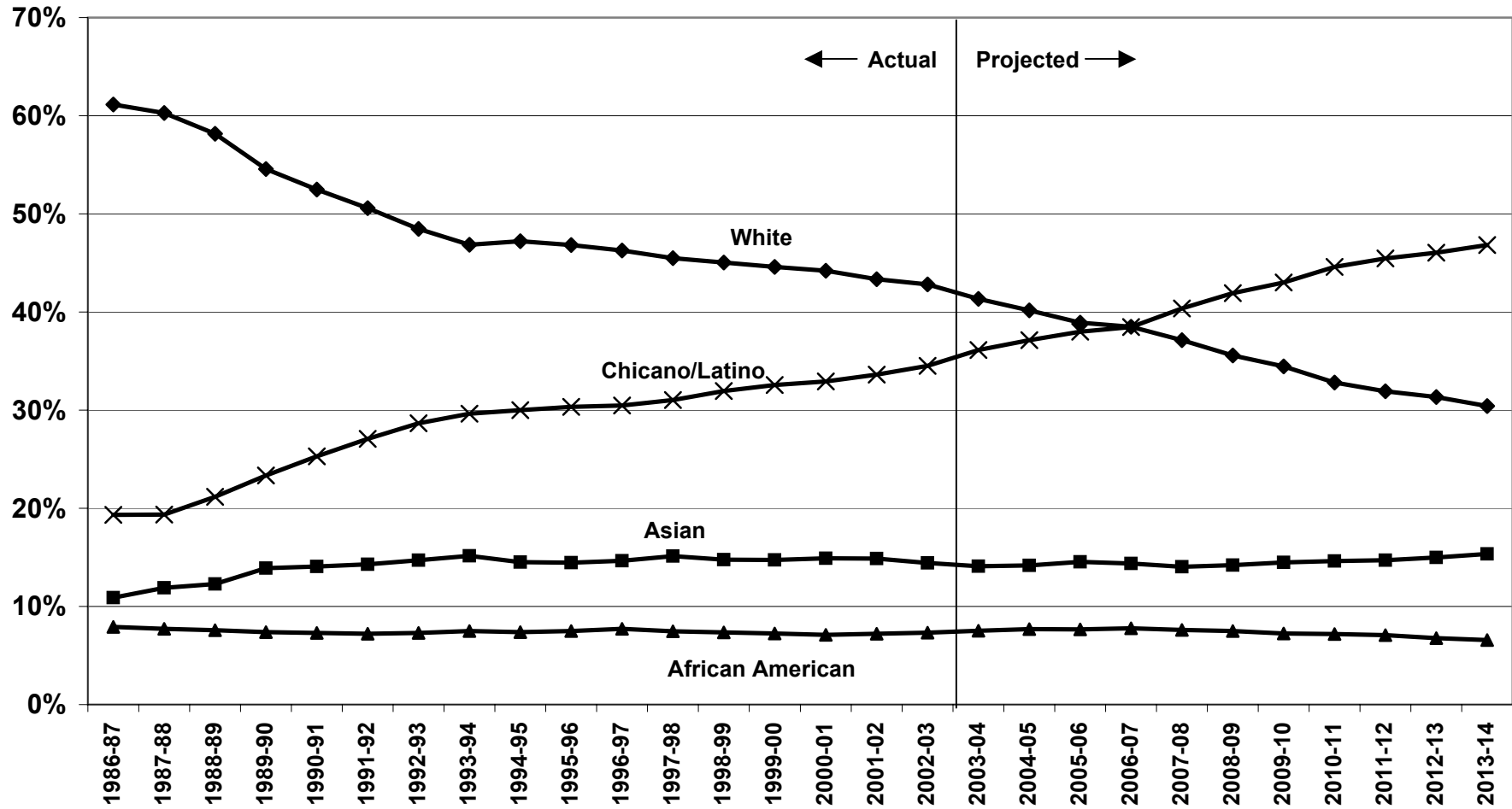


**Figure 1 - Percent of CA Public High School Graduates Eligible for UC in 1996 and 2003, by Race and Ethnicity**

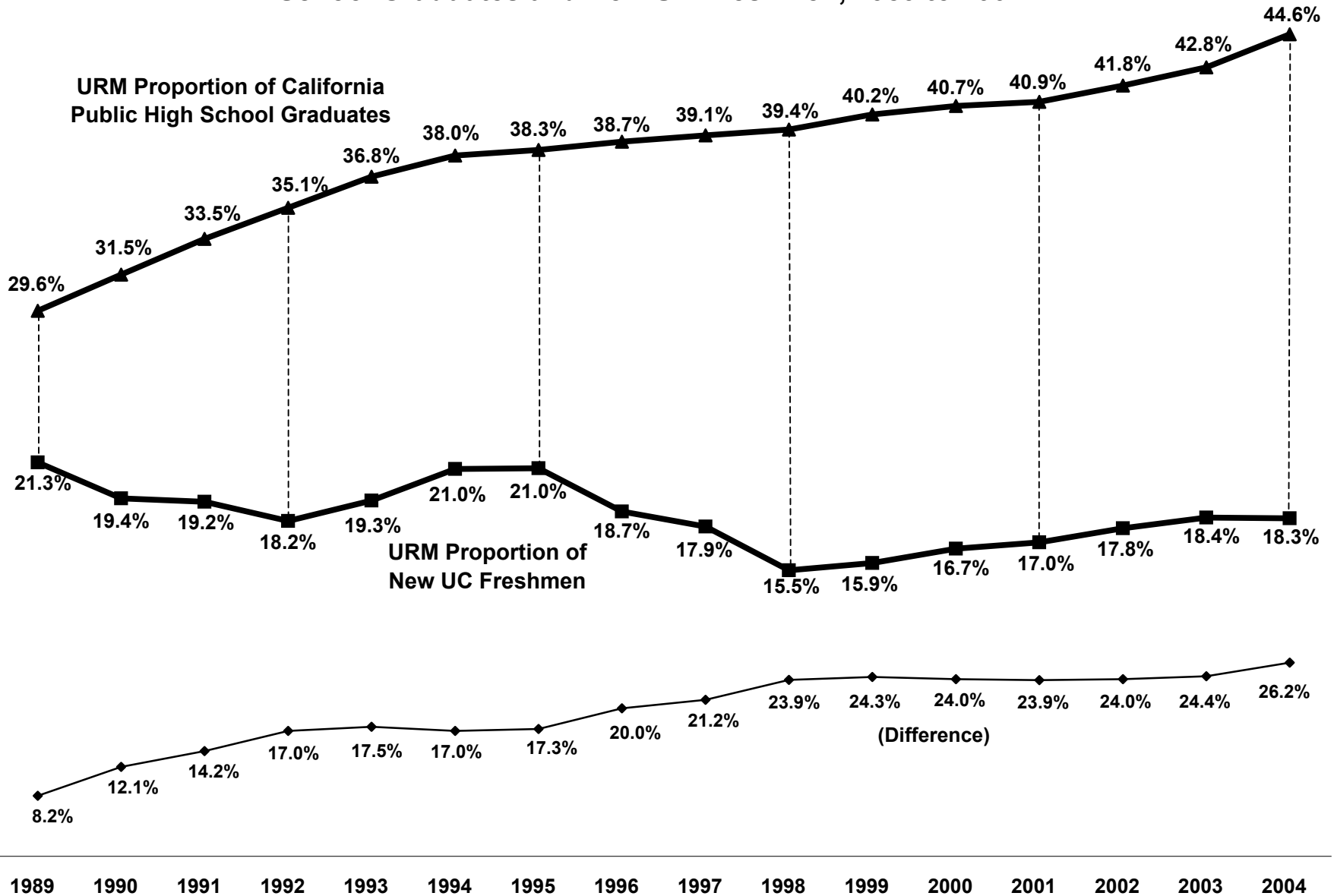


## Figure 2 - Racial and Ethnic Group Proportions of California Public High School Graduates

Data and Projections from California Department of Finance (2004)



**Figure 3 - Underrepresented Minorities as a Percentage of California Public High School Graduates and New UC Freshmen, 1989 to 2004\***

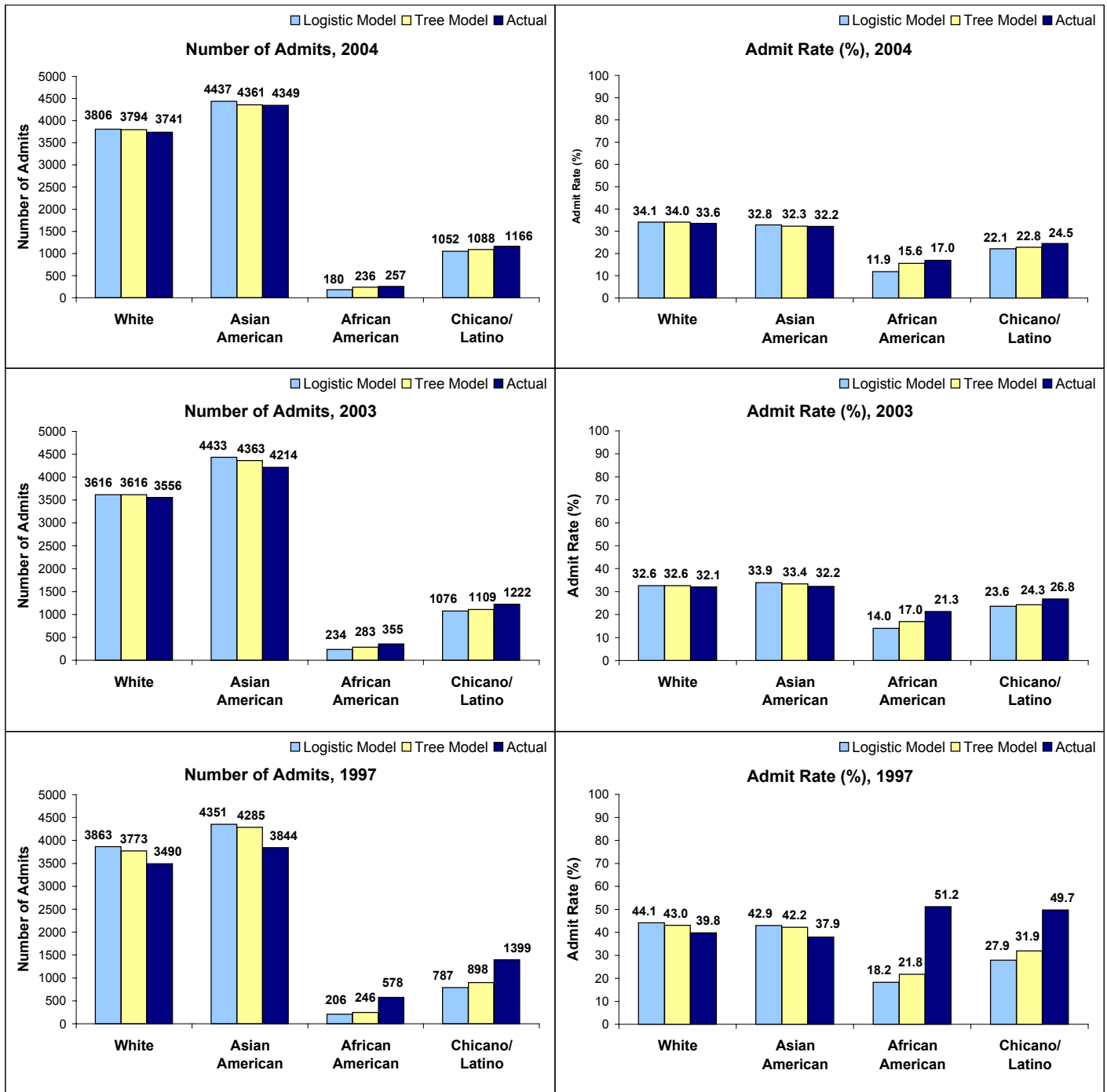


\* UC data for 2004 are preliminary and subject to change. High school graduate data for 2004 are projections.

### Figure 4 - Predicted and Actual Admits By Racial/Ethnic Group: UC Berkeley

Predicted admits are subject to statistical variation and are calculated using the available quantitative variables (qualitative factors not included).

Population: Fall Freshman Applicants, Excluding Withdrawals and Cancellations (N<sub>2004</sub>=36,002; N<sub>2003</sub>=35,972; N<sub>1997</sub>=26,476)\*



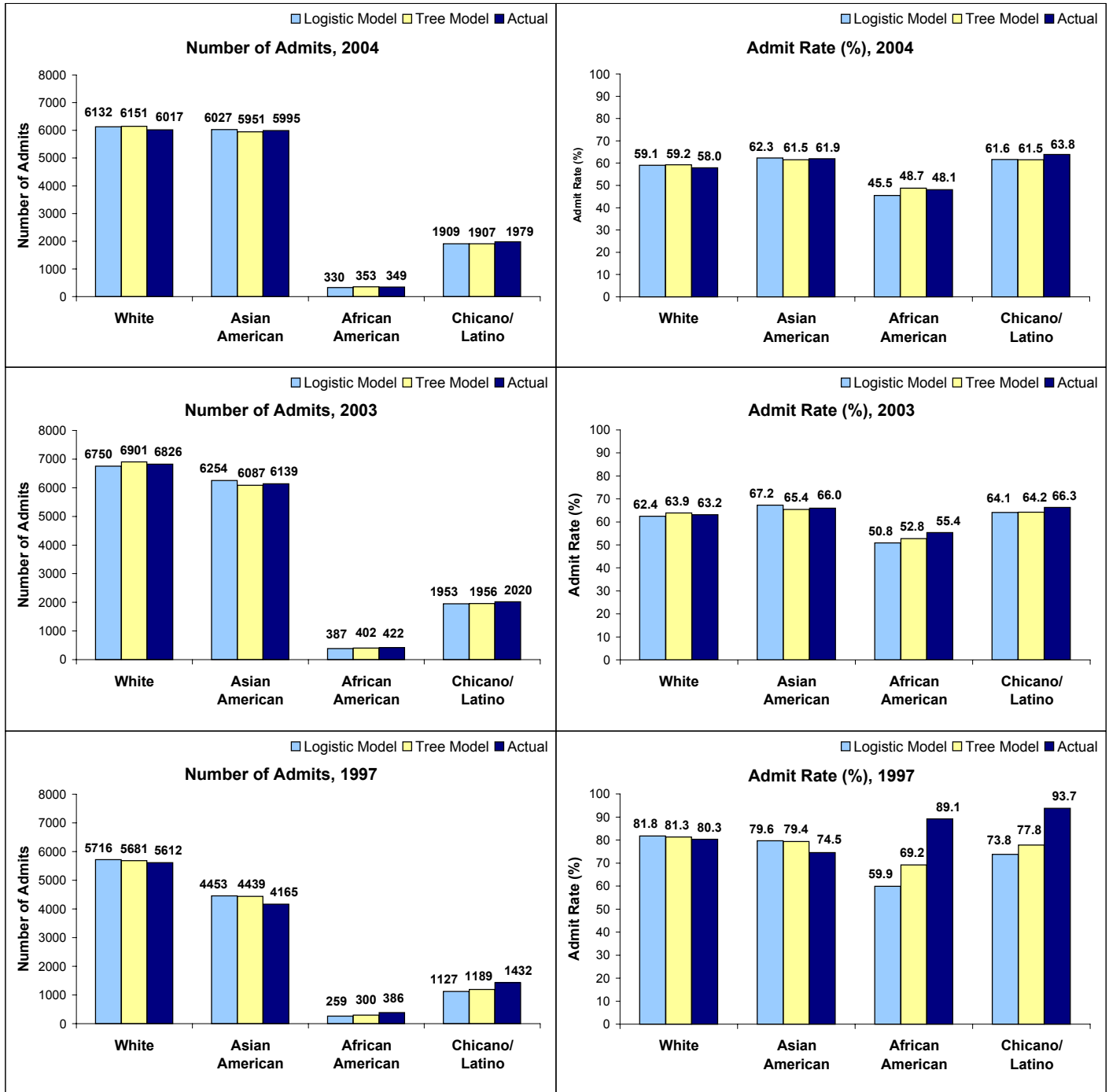
\* Excludes applicants who may have received special consideration for being athletes. Includes fall applicants admitted to the subsequent spring semester.

NOTE: These data reflect outcomes rather than the underlying process used for making admissions decisions. Campus decisions processes rely on more variables, including qualitative assessments, than can be accounted for in this analysis. Refer to the accompanying text for an explanation of these charts and to the technical appendix for additional information on the methodology.

### Figure 5 - Predicted and Actual Admits By Racial/Ethnic Group: UC Davis

Predicted admits are subject to statistical variation and are calculated using the available quantitative variables (qualitative factors not included).

Population: Fall Freshman Applicants, Excluding Withdrawals and Cancellations (N<sub>2004</sub>=26,481; N<sub>2003</sub>=26,702; N<sub>1997</sub>=15,573)\*



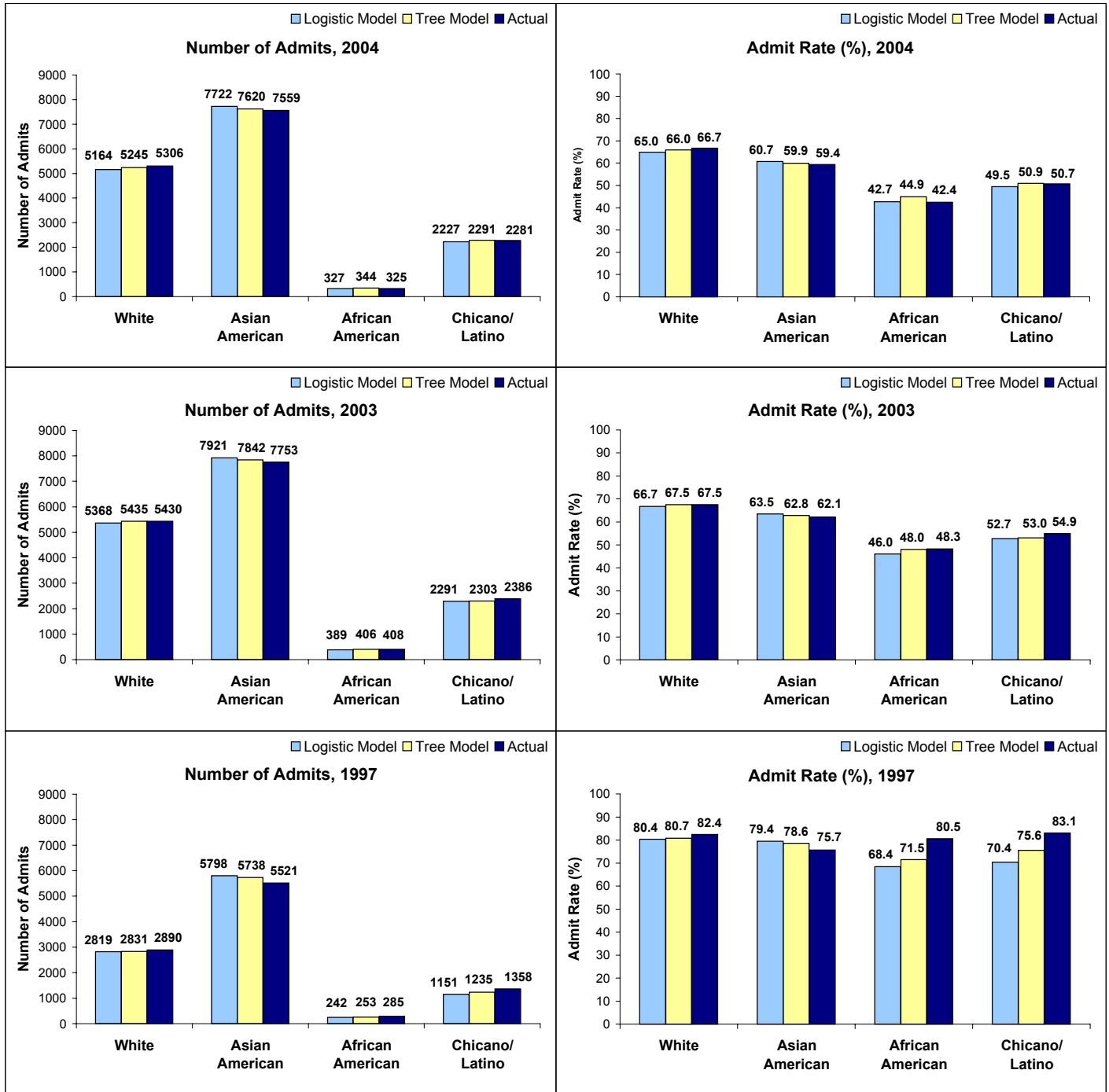
\* Excludes applicants who were not UC-eligible or who were not California residents.

NOTE: These data reflect outcomes rather than the underlying process used for making admissions decisions. Campus decisions processes rely on more variables, including qualitative assessments, than can be accounted for in this analysis. Refer to the accompanying text for an explanation of these charts and to the technical appendix for additional information on the methodology.

## Figure 6 - Predicted and Actual Admits By Racial/Ethnic Group: UC Irvine

Predicted admits are subject to statistical variation and are calculated using the available quantitative variables (qualitative factors not included).

Population: Fall Freshman Applicants, Excluding Withdrawals and Cancellations (N<sub>2004</sub>=28,379; N<sub>2003</sub>=28,392; N<sub>1997</sub>=13,486)\*



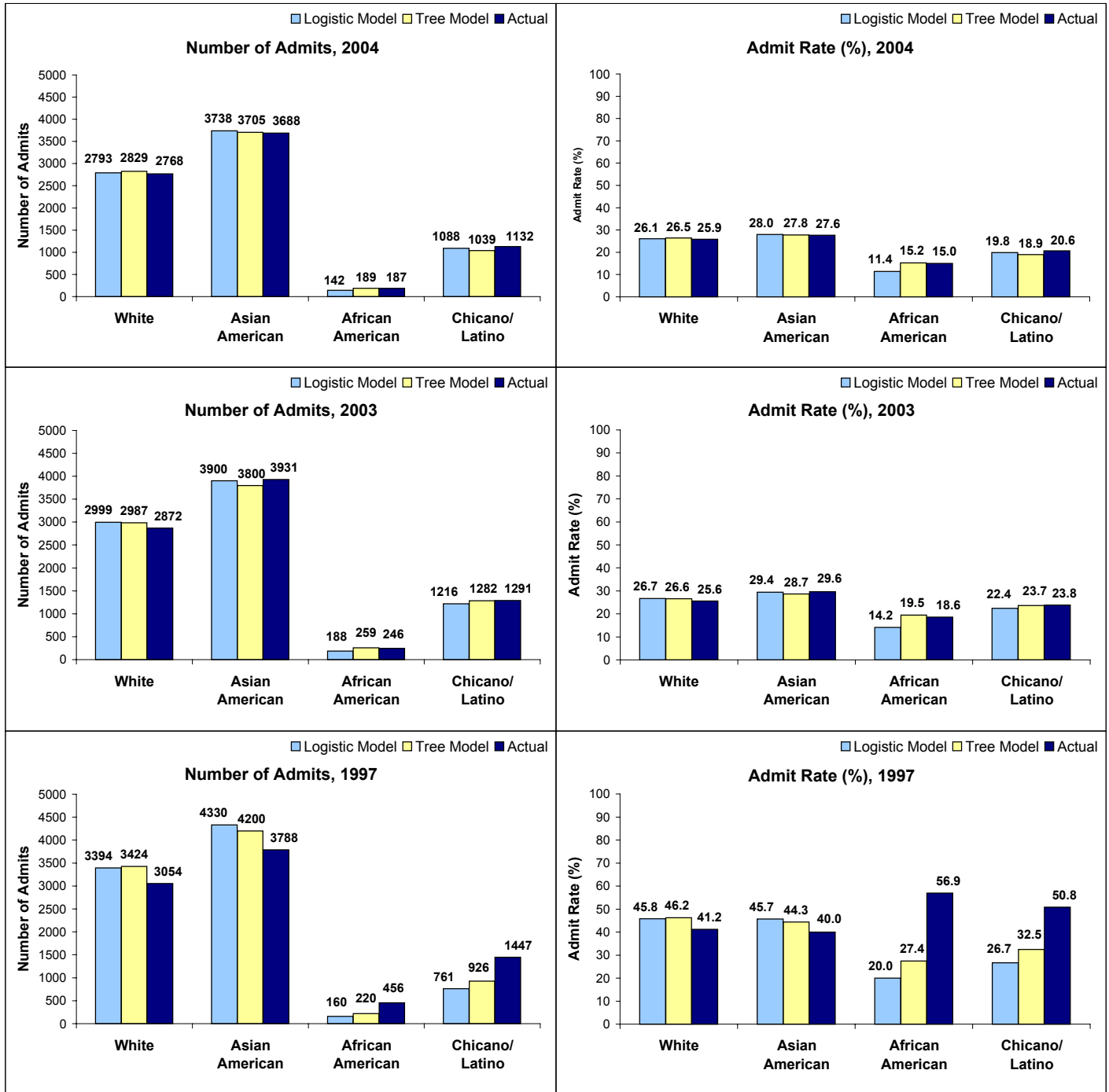
\* Excludes applicants who were not UC-eligible or who were not California residents.

NOTE: These data reflect outcomes rather than the underlying process used for making admissions decisions. Campus decisions processes rely on more variables, including qualitative assessments, than can be accounted for in this analysis. Refer to the accompanying text for an explanation of these charts and to the technical appendix for additional information on the methodology.

## Figure 7 - Predicted and Actual Admits By Racial/Ethnic Group: UC Los Angeles

Predicted admits are subject to statistical variation and are calculated using the available quantitative variables (qualitative factors not included).

Population: Fall Freshman Applicants, Excluding Withdrawals and Cancellations (N<sub>2004</sub>=33,987; N<sub>2003</sub>=34,801; N<sub>1997</sub>=21,835)\*



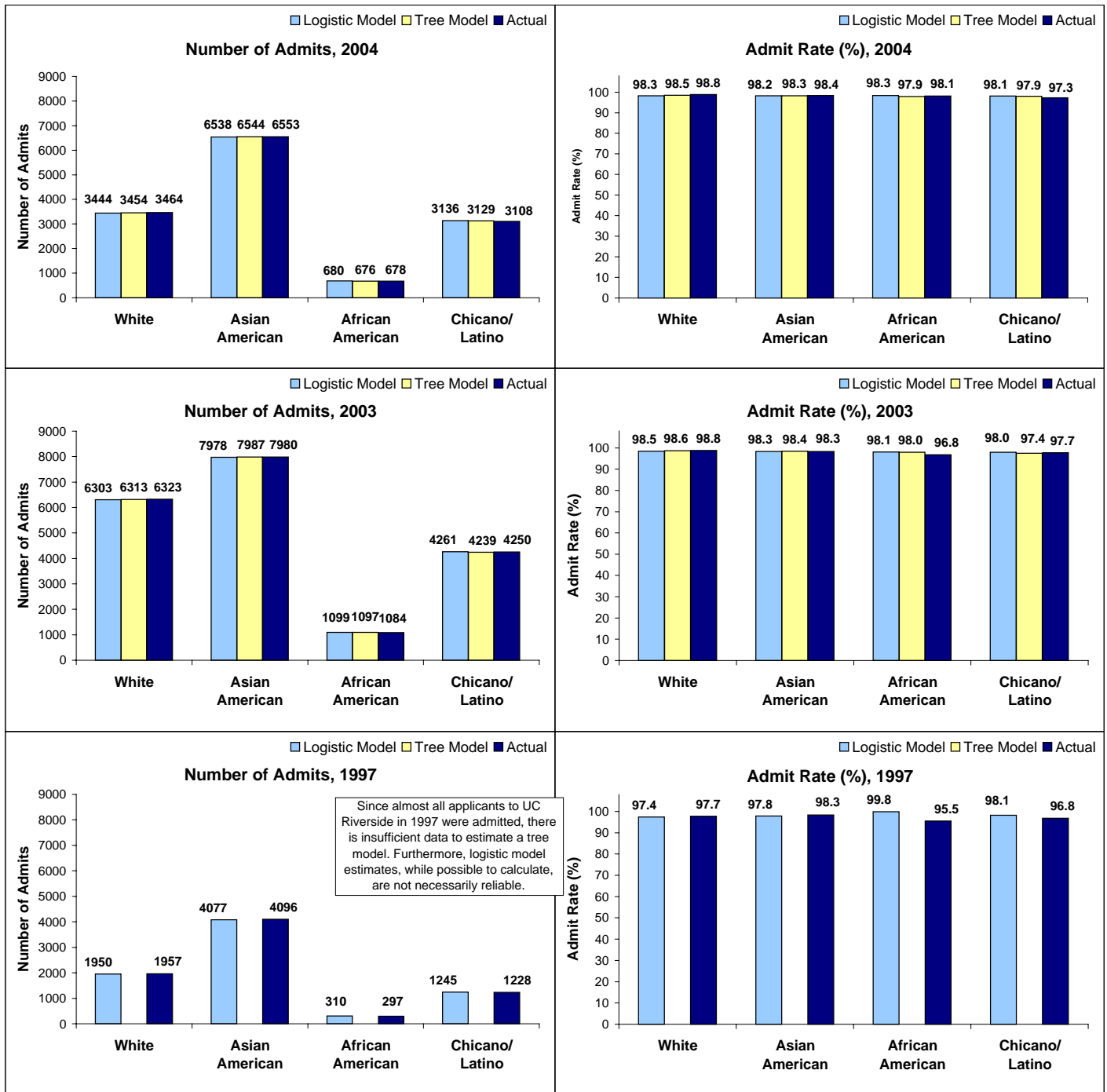
\* Excludes applicants who may have received special consideration for being athletes, who were not UC-eligible, or who were not California residents.

NOTE: These data reflect outcomes rather than the underlying process used for making admissions decisions. Campus decisions processes rely on more variables, including qualitative assessments, than can be accounted for in this analysis. Refer to the accompanying text for an explanation of these charts and to the technical appendix for additional information on the methodology.

## Figure 8 - Predicted and Actual Admits By Racial/Ethnic Group: UC Riverside

Predicted admits are subject to statistical variation and are calculated using the available quantitative variables (qualitative factors not included).

Population: Fall Freshman Applicants, Excluding Withdrawals and Cancellations (N<sub>2004</sub>=15,191; N<sub>2003</sub>=21,955; N<sub>1997</sub>=8,141)\*



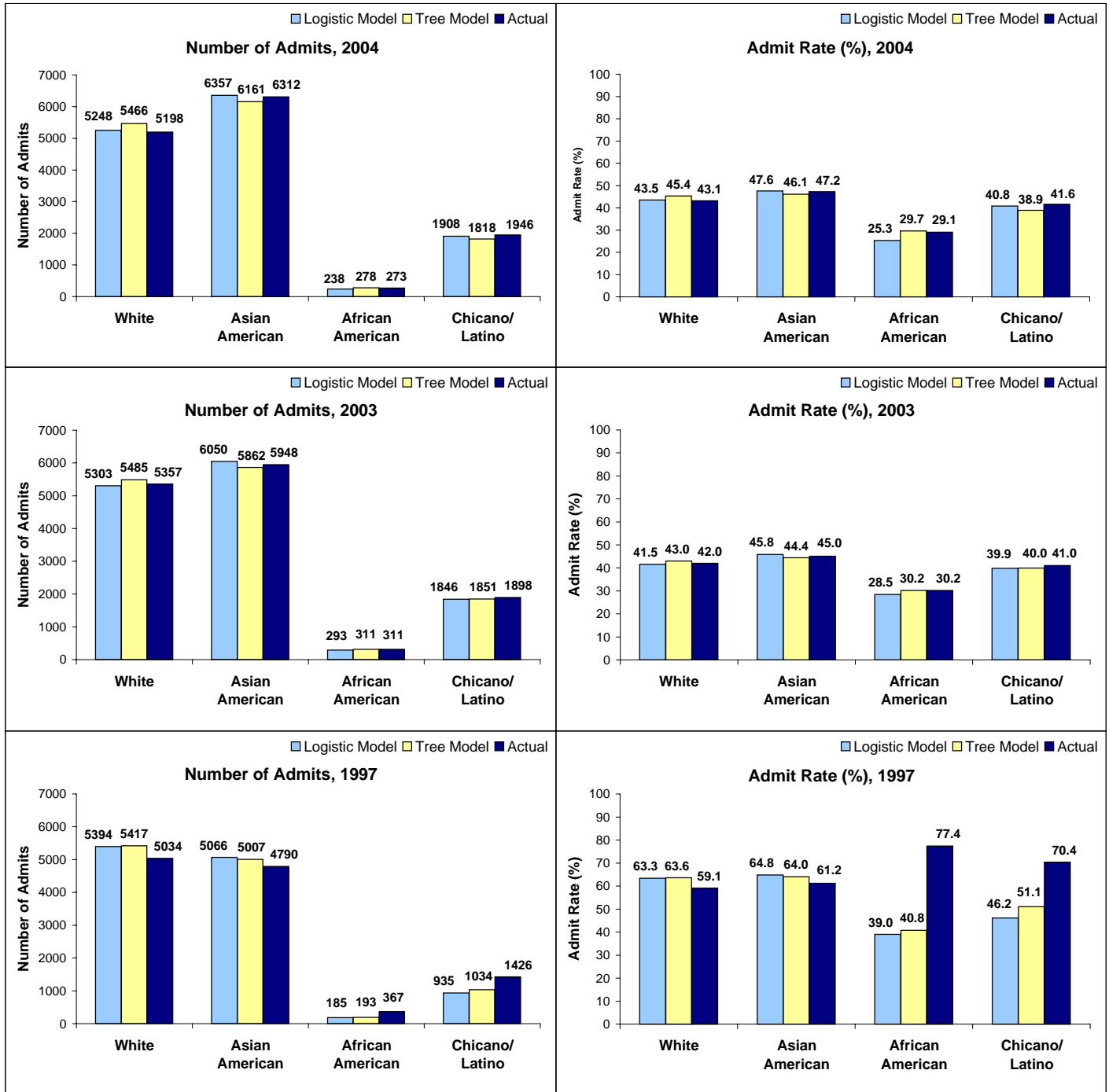
\* Excludes applicants who were not UC-eligible or who were not California residents.

NOTE: These data reflect outcomes rather than the underlying process used for making admissions decisions. Campus decisions processes rely on more variables, including qualitative assessments, than can be accounted for in this analysis. Refer to the accompanying text for an explanation of these charts and to the technical appendix for additional information on the methodology.

### Figure 9 - Predicted and Actual Admits By Racial/Ethnic Group: UC San Diego

Predicted admits are subject to statistical variation and are calculated using the available quantitative variables (qualitative factors not included).

Population: Fall Freshman Applicants, Excluding Withdrawals and Cancellations (N<sub>2004</sub>=34,397; N<sub>2003</sub>=35,318; N<sub>1997</sub>=20,131)\*



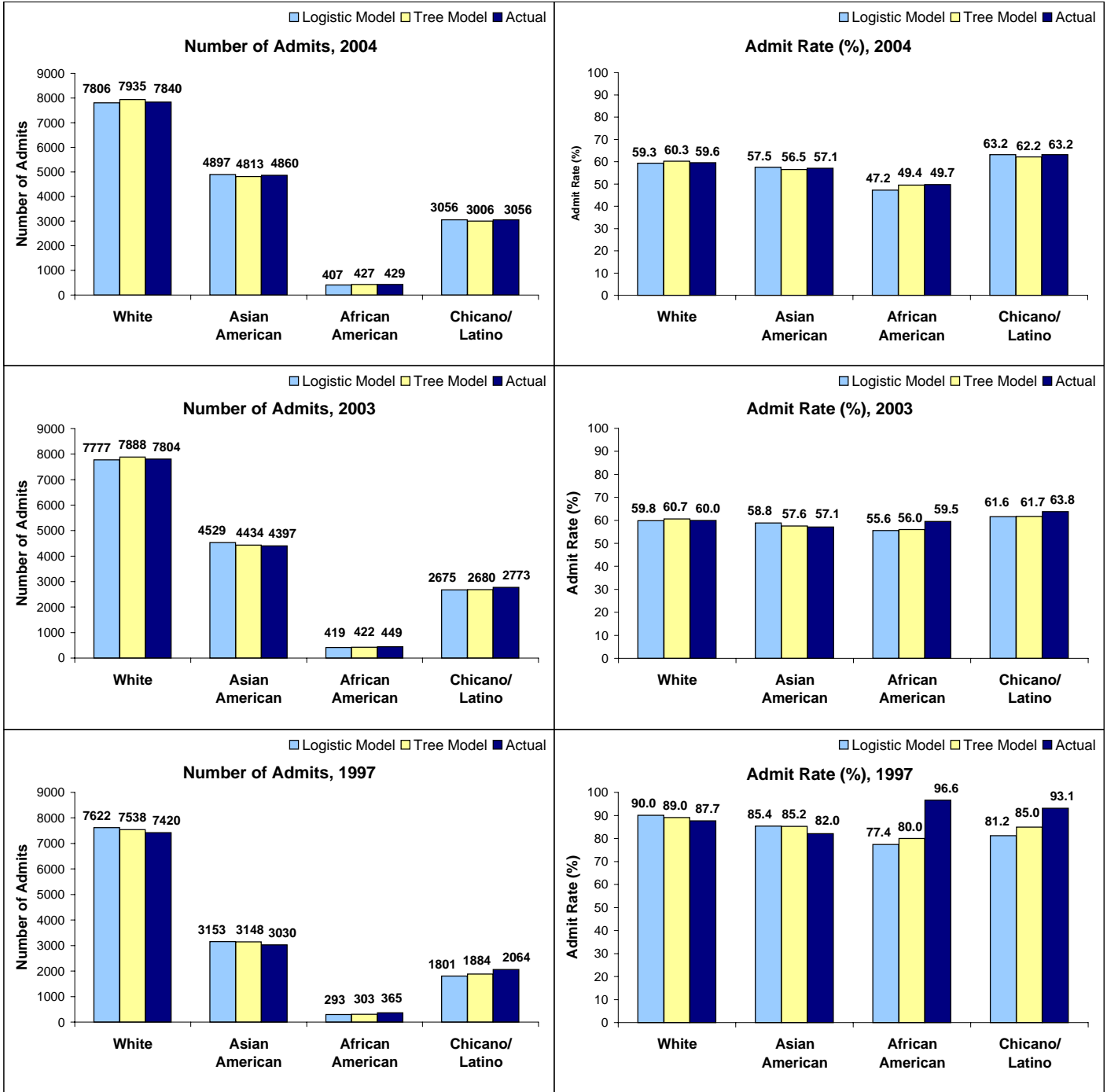
\* Excludes applicants who were not UC-eligible or who were not California residents.

NOTE: These data reflect outcomes rather than the underlying process used for making admissions decisions. Campus decisions processes rely on more variables, including qualitative assessments, than can be accounted for in this analysis. Refer to the accompanying text for an explanation of these charts and to the technical appendix for additional information on the methodology.

### Figure 10 - Predicted and Actual Admits By Racial/Ethnic Group: UC Santa Barbara

Predicted admits are subject to statistical variation and are calculated using the available quantitative variables (qualitative factors not included).

Population: Fall Freshman Applicants, Excluding Withdrawals and Cancellations (N<sub>2004</sub>=30,481; N<sub>2003</sub>=28,911; N<sub>1997</sub>=15,374)\*



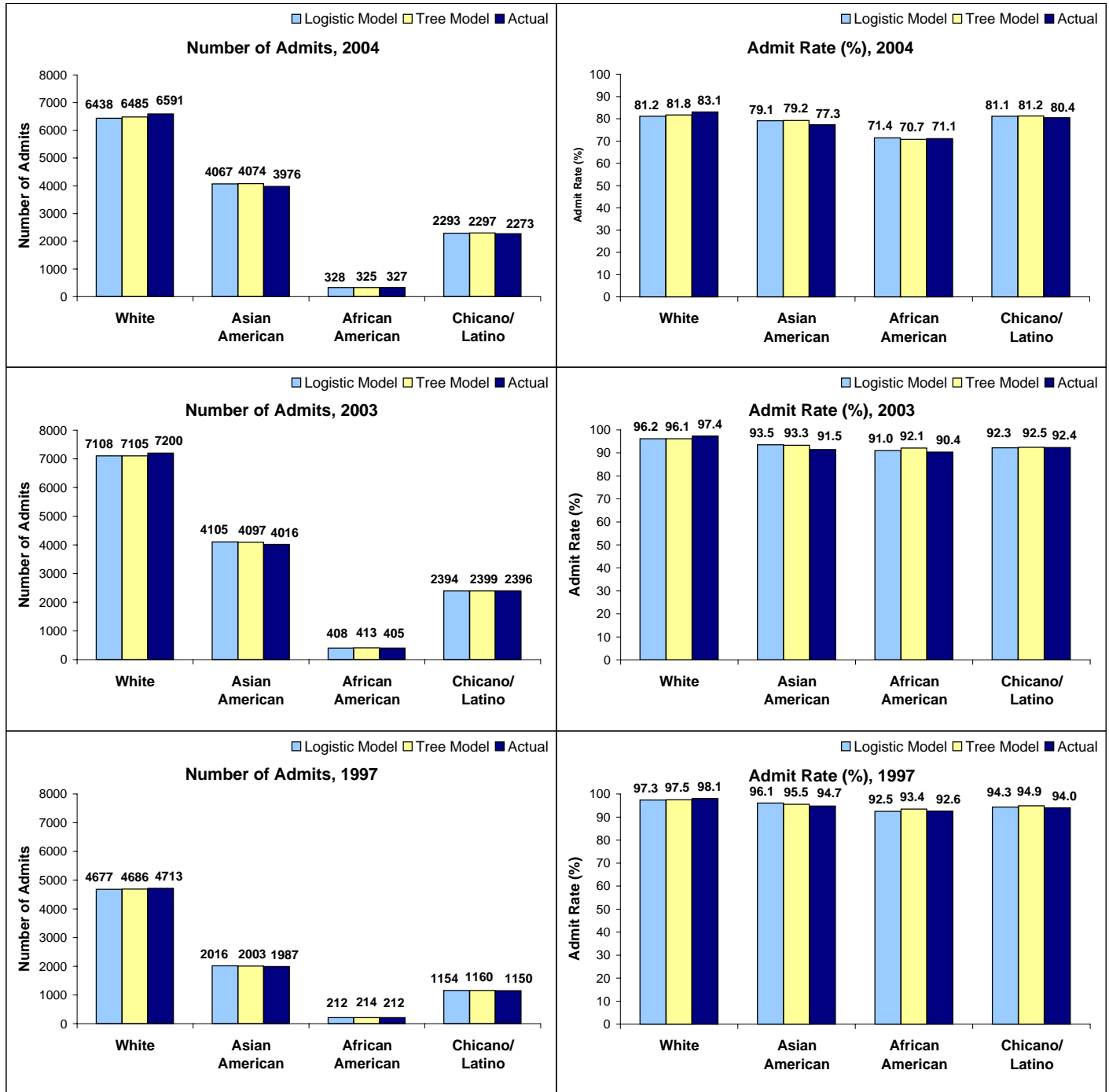
\* Excludes applicants who were not UC-eligible or who were not California residents.

NOTE: These data reflect outcomes rather than the underlying process used for making admissions decisions. Campus decisions processes rely on more variables, including qualitative assessments, than can be accounted for in this analysis. Refer to the accompanying text for an explanation of these charts and to the technical appendix for additional information on the methodology.

### Figure 11 - Predicted and Actual Admits By Racial/Ethnic Group: UC Santa Cruz

Predicted admits are subject to statistical variation and are calculated using the available quantitative variables (qualitative factors not included).

Population: Fall Freshman Applicants, Excluding Withdrawals and Cancellations (N<sub>2004</sub>=18,291; N<sub>2003</sub>=16,739; N<sub>1997</sub>=9,022)\*



\* Excludes applicants who were not UC-eligible or who were not California residents.

NOTE: These data reflect outcomes rather than the underlying process used for making admissions decisions. Campus decisions processes rely on more variables, including qualitative assessments, than can be accounted for in this analysis. Refer to the accompanying text for an explanation of these charts and to the technical appendix for additional information on the methodology.