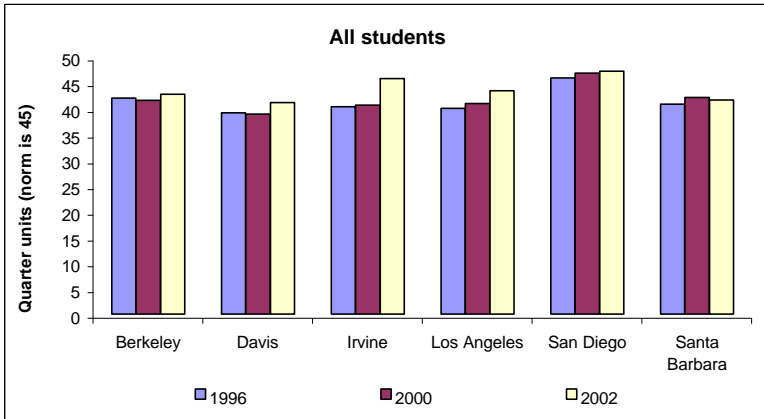
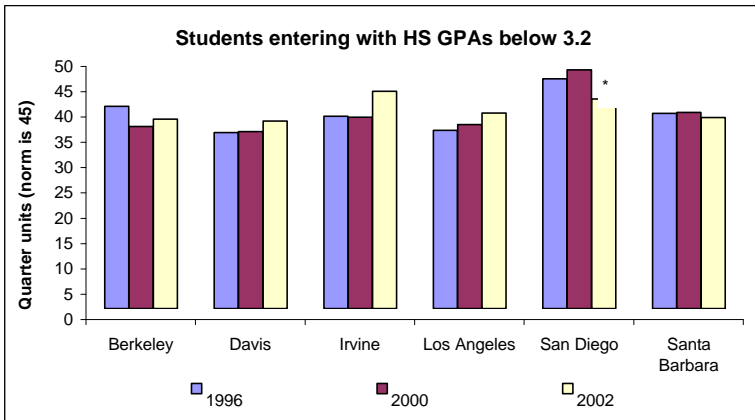


First-Year Outcomes of Students Enrolled as Freshmen in 1996, 2000 and 2002

Average Number of UC Units Completed in the First Year



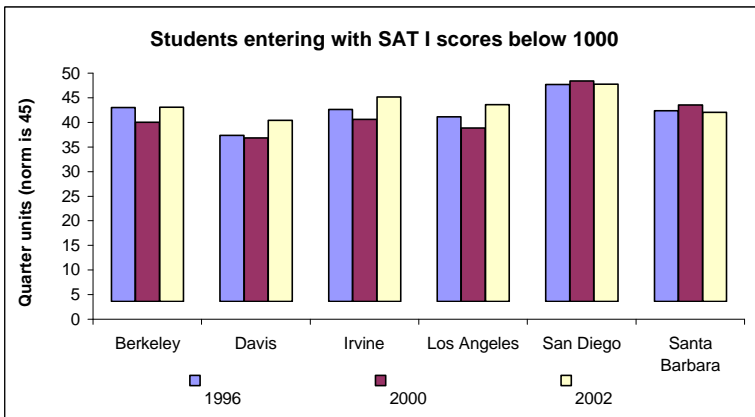
| | Number of students (all students) | | | | | |
|------|-----------------------------------|-------|-------|-------|-------|-------|
| | UCB | UCD | UCI | UCLA | UCSD | UCSB |
| 1996 | 3,708 | 3,687 | 2,945 | 3,820 | 2,680 | 3,466 |
| 2000 | 3,736 | 4,313 | 3,471 | 4,203 | 3,083 | 3,427 |
| 2002 | 3,653 | 4,675 | 3,796 | 4,257 | 4,206 | 3,842 |



| | Number of students (HS GPA below 3.2) | | | | | |
|------|---------------------------------------|-----|-----|------|------|------|
| | UCB | UCD | UCI | UCLA | UCSD | UCSB |
| 1996 | 198 | 287 | 217 | 132 | 24 | 619 |
| 2000 | 57 | 351 | 162 | 109 | 2 | 177 |
| 2002 | 66 | 384 | 90 | 111 | 10 | 242 |

Note: characteristics of small populations should be considered with caution

* In 2000, UCSD had only 2 students entering with HS GPAs below 3.2.



| | Number of students (SAT I below 1000) | | | | | |
|------|---------------------------------------|-----|-----|------|------|------|
| | UCB | UCD | UCI | UCLA | UCSD | UCSB |
| 1996 | 210 | 477 | 573 | 278 | 162 | 654 |
| 2000 | 197 | 562 | 314 | 228 | 106 | 377 |
| 2002 | 213 | 678 | 301 | 312 | 240 | 493 |

Note: characteristics of small populations should be considered with caution