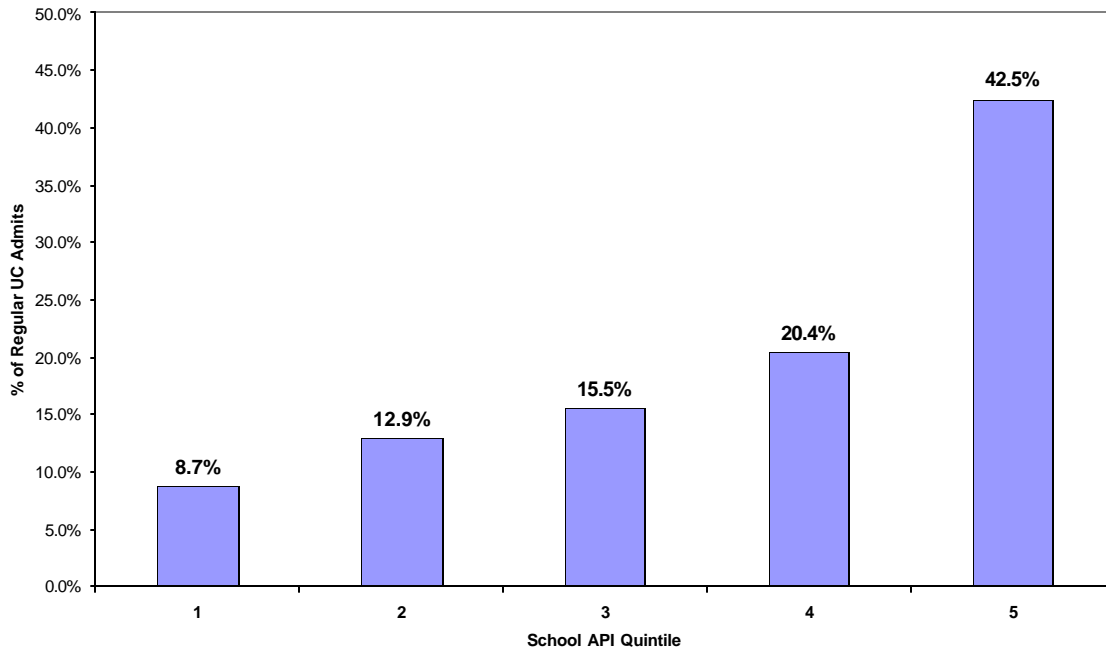


## Chart 1

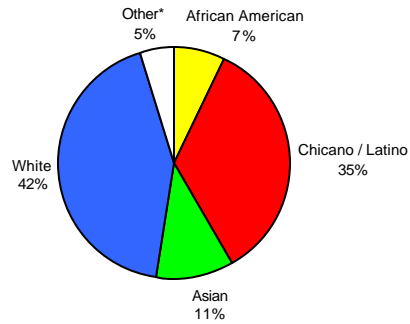
Proportion of Regular UC Admits from CA Public High Schools  
by School API Quintile, Fall 2003



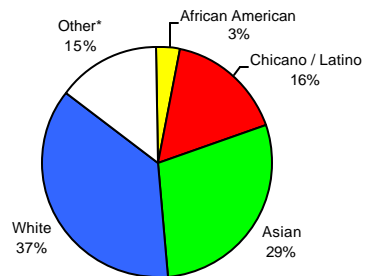
## Chart 2

Race/Ethnicity Proportions of Regular UC Admits from CA Public High Schools, Fall 2003  
Compared to All CA Public High School Graduates, 2003 (Estimated)

All CA Public High School Graduates 2003 (est)



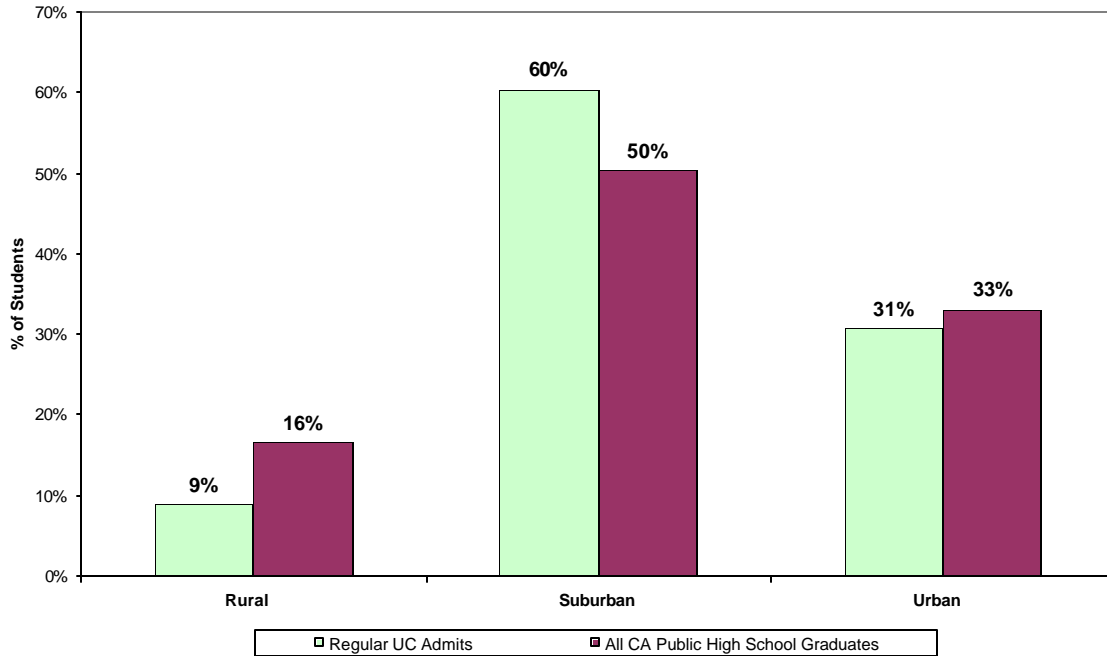
Regular UC Admits from CA Public High Schools



\* Other category includes Native American, Filipino, Pacific Islanders and "Decline to State". "Decline to State" category applies only to UC data.

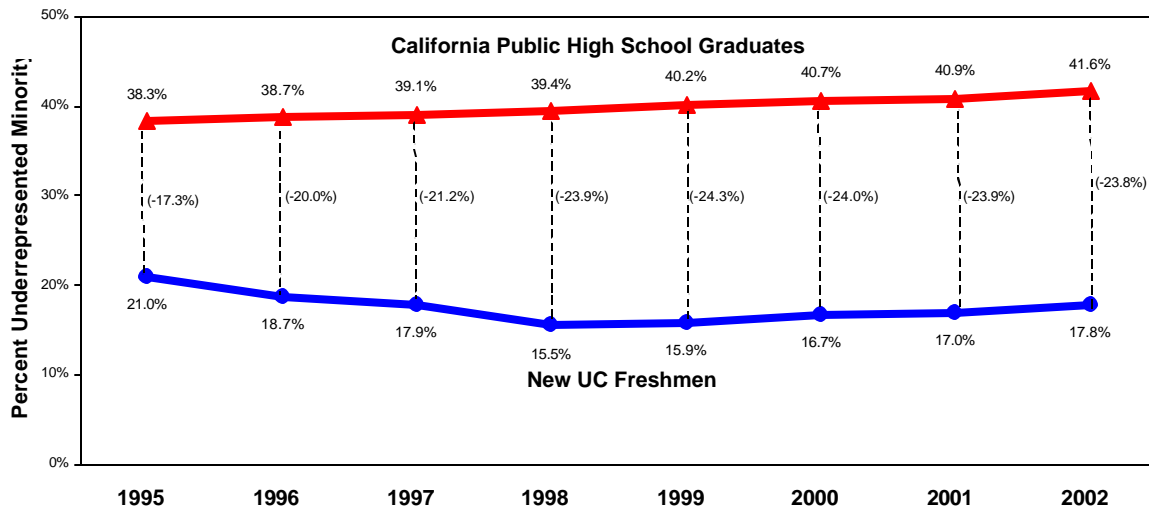
### Chart 3

Geographic Distribution of Regular UC Admits from CA Public High Schools, Fall 2003  
Compared With All Public High School Graduates, 2002



### Chart 4

Underrepresented Minorities as a Percentage of CA High School Graduates  
and New UC Freshmen, 1995 to 2002

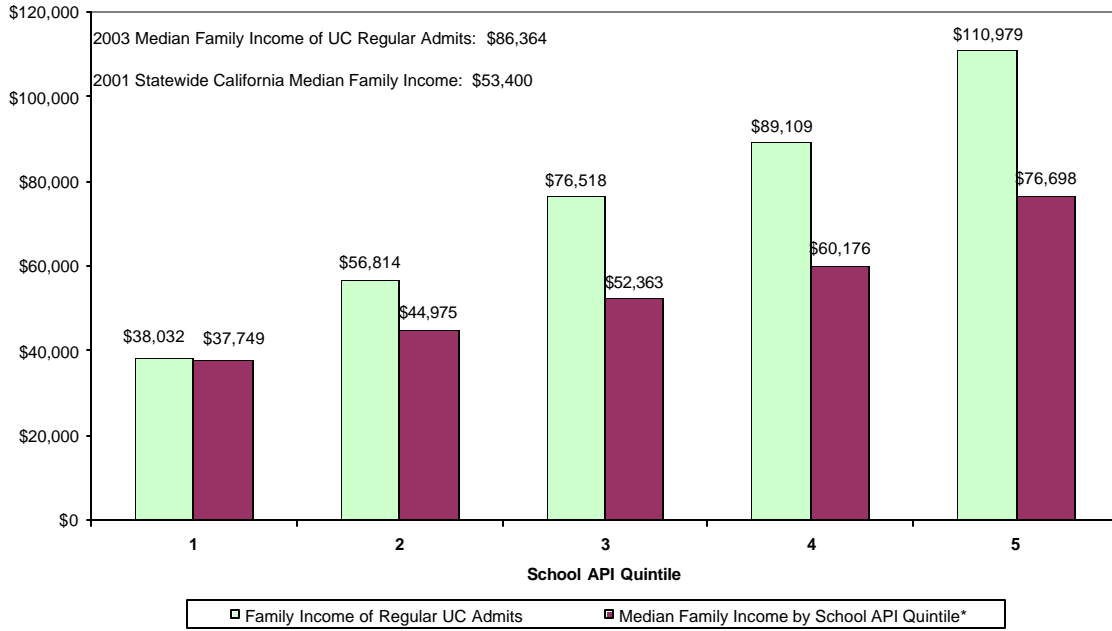


\*The projected number of graduates from California public high schools was used for calculating the percentage for 2002. The source of the projection is California Department of Finance.

Note: UC enrollment data are for students from private and public high schools, California residents, enrolling in the fall term as first-time freshmen.

## Chart 5

**Median Family Income of Regular UC Admits  
from CA Public High Schools, Fall 2003  
Compared with Statewide Income Figures, Census 2000**



\* Source: US Census Bureau - Census 2000 Data for California. Median Family Income by census tract and zip code.

## Chart 6

**First Generation to Attend College - Regular UC Admits, Fall 2003  
Compared with the Percent of Parents Who Did Not Graduate from College, 2002  
All CA Public High Schools by School API Quintile**

