

Santa Cruz:

A Settlement of Lawyers

Larry Pageler, Director
Transportation and Parking Services (TAPS)
University of California, Santa Cruz

TAPS System Wide Videoconference
March 23, 2009



Update Topics

- Susan Willats, Assistant Director
- Comprehensive Settlement Agreement (CSA) between UCSC, City and County
- Recent Traffic and Parking Trends
- Current Tasks and Challenges
- TAPS Funding Models



Update Topics

- Susan Willats, Assistant Director
- Comprehensive Settlement Agreement (CSA) between UCSC, City and County
- Recent Traffic and Parking Trends
- Current Tasks and Challenges
- TAPS Funding Models

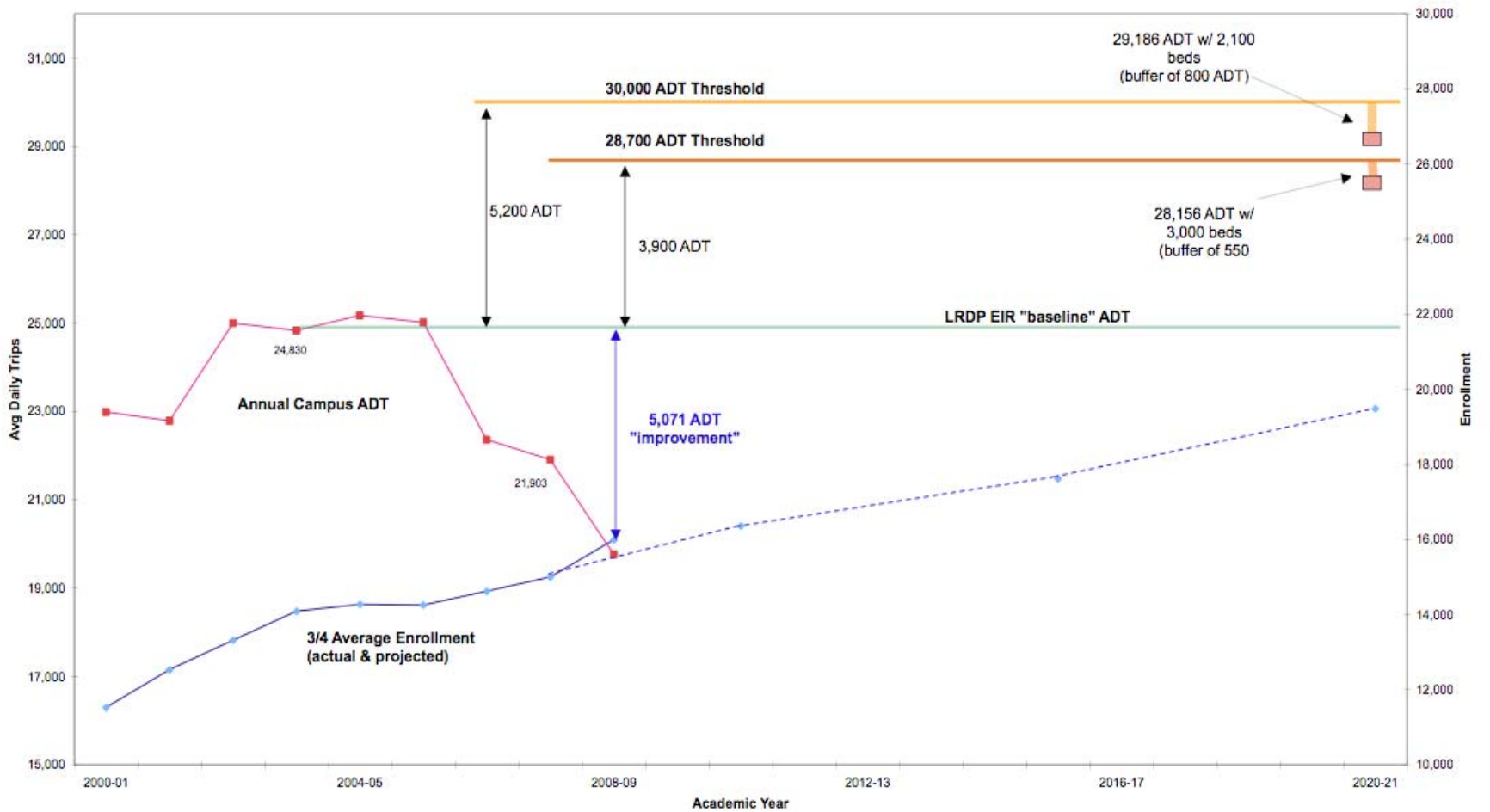


CSA

- Settlement reached September 2008
- Enrollment, Housing, Water & Traffic
- Campus “Threshold” of 28,700 ADT
 - 3,900 ADT above LRDP Baseline
 - UC contribution of **\$366**/trip = City TIF
 - **\$1,427,400** initial payment



Trends: Campus ADT & Enrollment



CSA

- Campus “Threshold” of 28,700 ADT
 - 3,900 ADT above LRDP Baseline
 - UC contribution of **\$366**/trip = City TIF
 - **\$1,427,400** initial payment
 - Additional payments if campus threshold is exceeded during lifetime of LRDP (20-21)
 - Additional payments for two off-campus sites



CSA

- UCSC & City Cooperative Efforts:
 - Work Group addressing Peak Hour & Total ADT
 - Cooperative updates to City traffic model
 - Public Transportation Study Group
- Additional funding:
 - \$50k for Study Group
 - \$50k for 3 years for off-campus parking
 - \$500k over 3 years for other improvements
 - ~\$750k immediately for other roadway projects



Update Topics

- Susan Willats, Assistant Director
- Comprehensive Settlement Agreement (CSA) between UCSC, City and County
- **Recent Traffic and Parking Trends**
- Current Tasks and Challenges
- TAPS Funding Models

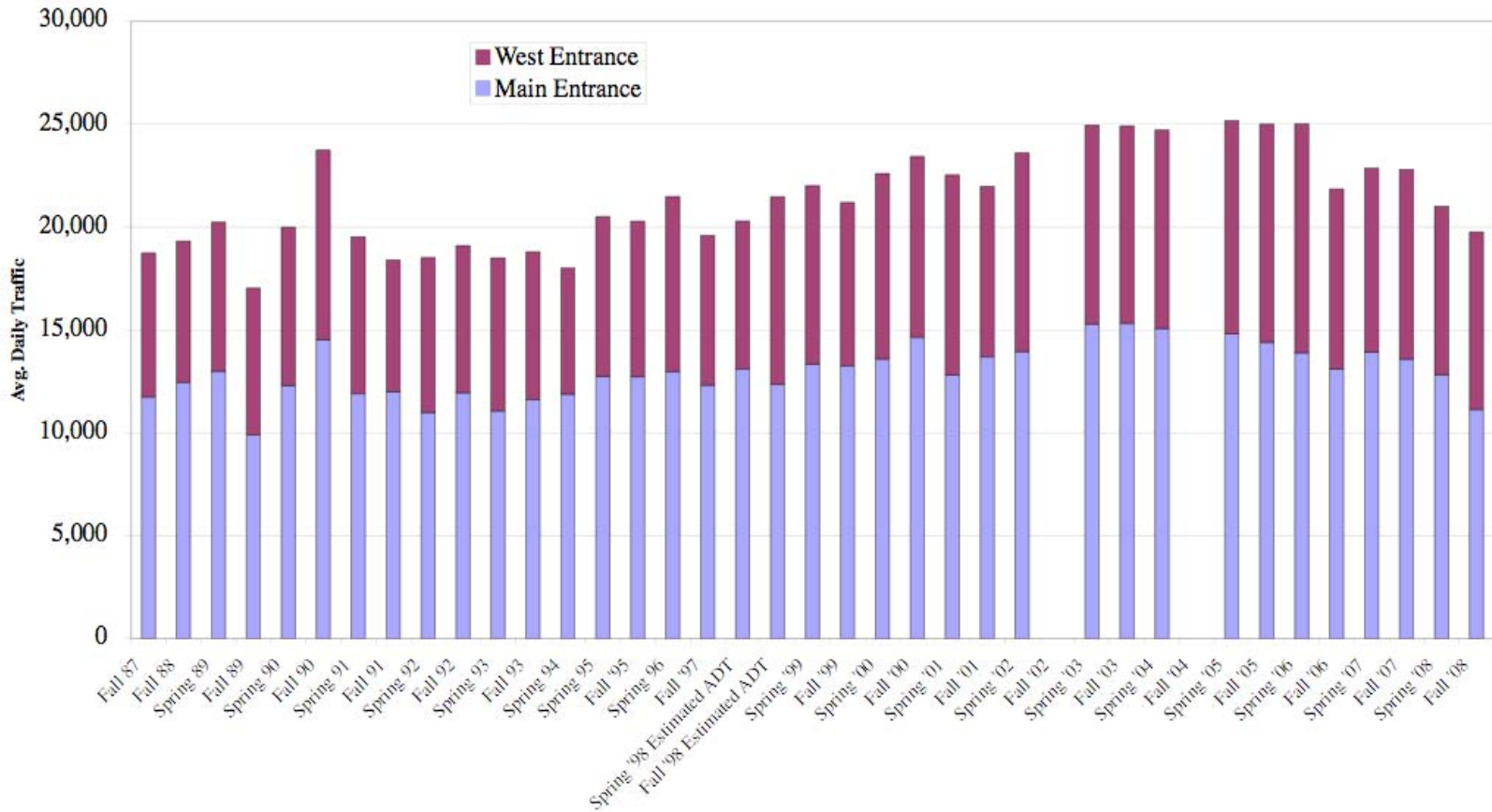


Recent Trends

- Three years of declining campus ADTs:
 - Fall 2008 traffic down at 7 of 8 locations
 - The 8th appears to be internal bike traffic!



Weekday ADTs Through Both UCSC Entrances (based on SCCRTC semi-annual hose counts)

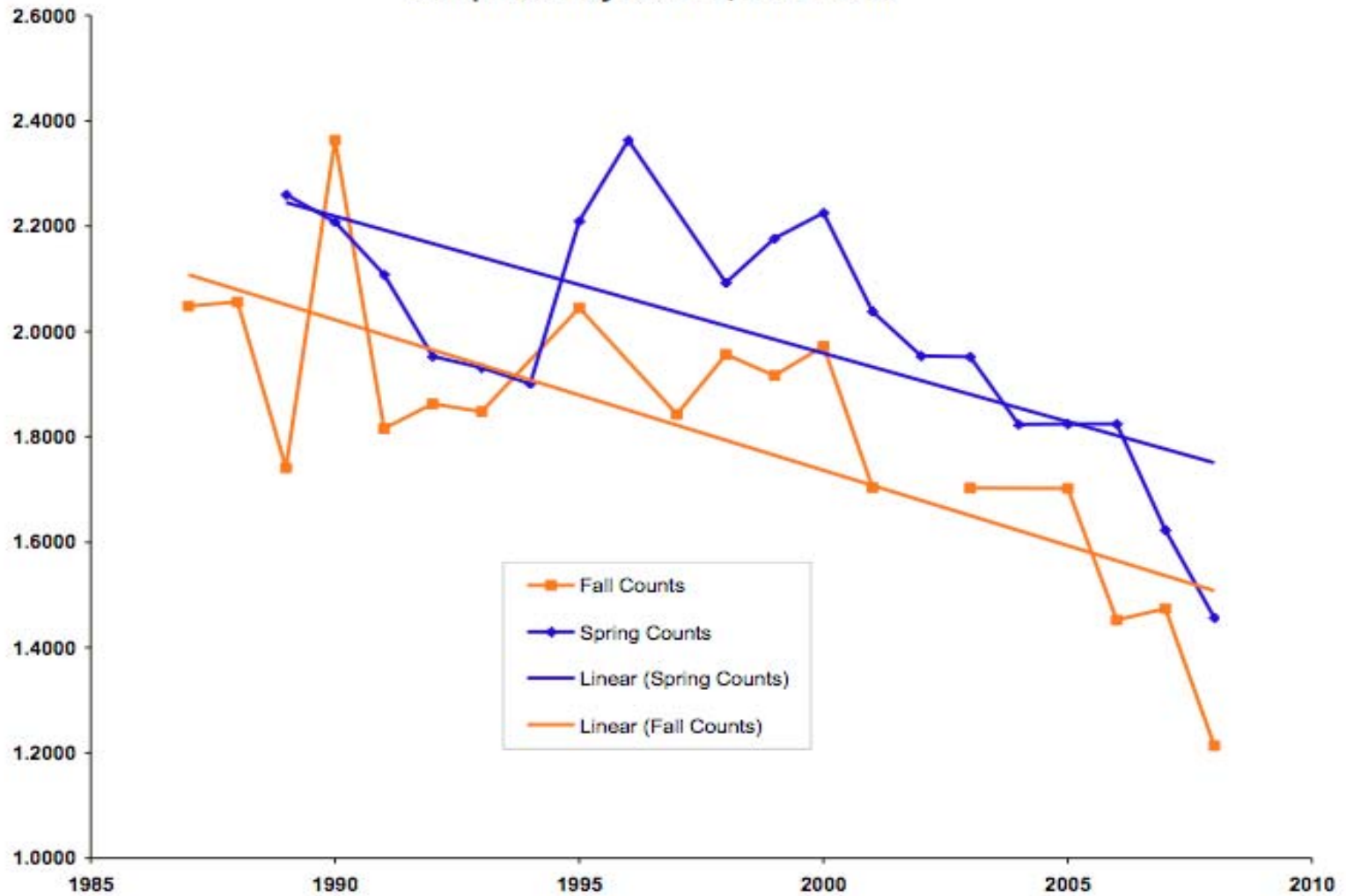


Recent Trends

- Three years of declining campus ADTs
 - Fall 2008 traffic down at 7 of 8 locations
 - The 8th appears to be internal bike traffic!
 - Large decline in per capita trip rate



**Weekday UCSC ADTs per Student Enrolled:
Comparison by Quarter, 1987 - 2008**



Recent Trends

- Commuter Transit ridership YTD:
 - Students up **~7%**
 - Faculty/staff down **~11%**
- Commuter Bike ridership Fall 2008:
 - Up **82%**
- Bike Shuttle ridership:
 - Up **30%**



Recent Trends

- Parking:
 - Revenues down 6-10% YTD
 - Demand down among commuting students
 - Anticipate more decline in Reserved & Event parking as departments cut costs



2008-09 Parking Revenues: Cumulative Trends



Update Topics

- Susan Willats, Assistant Director
- Comprehensive Settlement Agreement (CSA) between UCSC, City and County
- Recent Traffic and Parking Trends
- **Current Tasks and Challenges**
- TAPS Funding Models



Current Tasks and Challenges

- LRDP Implementation:
 - Central funding for MMP?
 - Extend parking management to 2 new sites
 - Develop Pedestrian Plan
- Climate Action Plan (CAP)
- Climate Action Compact (CAC)
- SB375 & AB32



Current Tasks and Challenges

- Vanpool and bus purchases/leases
- “Luke” pay-stations replacing meters
- Zipcar Year 2:
 - More than **715** active members
 - Utilization @ **35-45%** for **nine** cars
 - Is it reducing residential parking demand?
- Zimride start-up Spring 2009
- Federal Stimulus funding



Update Topics

- Susan Willats, Assistant Director
- Comprehensive Settlement Agreement (CSA) between UCSC, City and County
- Recent Traffic and Parking Trends
- Current Tasks and Challenges
- **TAPS Funding Models**



TAPS Funding Model

- Central funding of LRDP requirements
- Carbon offset funds
- Transit passes: No-fare => Some-fare
- Banding of Faculty/Staff parking permits



Onward!



UC System Wide TAPS Videoconference, March 23, 2009